

Cityliving™

cityliving.com.sg

FENG SHUI IN
THE YEAR OF
THE DRAGON

VOL 9

INSPIRATION x PRAGMATISM IN ACTRESS MEI XIN'S HOME

JAYLEY WOO'S JOURNEY

The actress and doting mum is happiest at home with her toddler.

PILOT KITCHEN

Four young chefs who think out of the wok.

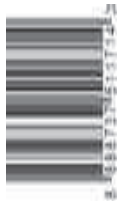
AIR-CON MYTHS

Debunking misconceptions about air-con care.

THE PERKS OF GROUP BUYS

Superb deals and expert advice await BTO owners.

S\$5.00
VOL 9 • MAR 2024





JET-POWERED HEAVY-DUTY COOLING SYSTEM



Introducing the advanced home cooling system unique to Mitsubishi Heavy Industries Air Conditioners with precise, wide-ranging, and cleaner air flow using less energy for more savings. Thanks to JETTA! Our jet-powered technology ensures your family will have a cool and well-protected home.

JETTA

YOUR MIGHTY JET-POWERED HOME PROTECTOR



ADVANCED HOME COOLING TECHNOLOGY



QUICK-COOLING



WIDE-ANGLE REACH



POWERFUL AIR FLOW



CLEANER AIR FLOW



SMART CONTROL



AUTHORISED DISTRIBUTOR OF MHI AIRCON
KM MARKETING PTE LTD
No.1 Jalan Kilang Timor #08-03 Pacific Tech Centre (S) 159309

MOVE THE WORLD FORWARD MITSUBISHI HEAVY INDUSTRIES GROUP

FOR ENQUIRIES CALL 6637 9888 EMAIL aircon@kmgroun.com.sg VISIT WWW.MHIAIRCON.COM.SG



1
No. 1
European
Ambilight TV

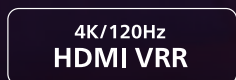
19
Years in
Ambilight TV



the one that has it all

**Philips 4K UHD HDR
Google TV**
with 3-sided Ambilight

Meet The One - 65PUT8808 Ambilight TV will turn up the joy in your home! You get thrilling picture quality, all the apps you could want, and epic gaming.



CONTENTS

Mother's DAY SPECIAL

8

A home inspired by a mother's love

16

Living with Mum and loving it

24

Gifts to make Mum's day



8

26

6 things you need to create a home spa for Mum



VOL 9 • MAR 2024

THE COVER



Actress Mei Xin combines pragmatism with inspiration in the home she shares with her mum.

PHOTO:
Frenchescar Lim

BEST NEW FINDS

34

The dish on dishwashers

40

Bathroom design trends to try

46

Pillow talk



COOL STUFF

52

7 air-con myths, debunked

58

Easy ways to add value to your home



58





HOME INSIDER

64
Cooking up a magical Mother's Day meal

68
House of the Dragon

72
Hungry for culinary success



68



92

GET SMART

80
TV talk

82
Sofa, so good

84
Keep household pests away



82



80

JUST FOR YOU

92
Get all you need to create the home of your dreams

94
Flash for fantastic deals!

96
Editor's choice

96



Cityliving™

cityliving.com.sg

Editorial Advisors

Publisher

Kenny Teo

Editorial Publisher

Walter Lim

Technical Advisor

Teo Meng Hwee

Contributors

Candy Cao
Lam Yi Lin
Lionel Teo
Ng Eng Hwa
Yoson Teo

Editorial & Creative

Supervising Editor

Maureen Ho

Publishing Editor

Dora Tay

Executive Sub-Editor

Leonard Lau

Staff Writer

Sean Yee

Creative Director

Alex Goh

Art Director

Jes Sy Ong

Contributors

Andrew Y, Frenchescar Lim,
Leslie Ong, Melanie Wong,
Sasha Gonzales, Su-Ying
Chen, Wei Liang Wong

Administration & Editorial Support

Commercial Lead

Lim Wei Yang

Solutions Development

Assistant Manager

Neo Pei Shi

Marketing Lead

Margaret Tan

Assistant Manager

(Publishing Services)

Rahmah Aman

**CITY LIVING™ is published
by Gain City Best-Electric
Pte Ltd**

8 Ang Mo Kio Industrial Park 2,
Singapore 569500

Tel: +65 6565 1212

Fax: +65 6555 1212

Website: www.gaincity.com

Business Registration No.

199304709Z

For advertising enquiries:

Email: advertising@cityliving.com.sg

Tel: +65 6565 1212

**Publishing Agent:
Focus Publishing Ltd**

(A subsidiary of SPH Media Holdings)

Printer & Colour Separation: KHL Printing Co. Pte Ltd

Distributor (Singapore): SPH Media Limited

MCI (P) 003/10/2023. City Living™ Magazine is published by Gain City Best-Electric Pte Ltd (Registration No. 199304709Z). Copyright of the material belongs to Gain City Best-Electric Pte Ltd and all rights are reserved by said party. This publication, in part or in whole, is not to be reproduced, stored, and transmitted, digitally or otherwise, without the prior consent of the publisher. The views and opinions expressed or implied are those of the authors or contributors and do not necessarily reflect those of the publisher. Although all precautions have been taken, we shall not be held liable for any actions taken based on views expressed, or information provided within this publication. © 2018

SAMSUNG

— BE —

kitchen smart

Here's where style meets substance — stay connected and save energy like never before.

With a Bespoke kitchen this smart, create marvellous moments and delectable dishes with your loved ones. All at once.



HITACHI

Effortless comfort with hassle-free controls



Connect your Hitachi air conditioners to **airCloud Go** via wifi
Enjoy freedom and convenient features to save energy & improve comfort.



Smart-Fence

Automatically stop and start your AC as you leave and return home.



Voice control

Connect with your smart speaker and set your indoor climate via voice control.



Energy cost estimator*

Track the energy consumption and follow the cost impact on your budget.



airCloud Go



1. airCloud compatibility of wifi adapter varies depending on air conditioner models. The installation of an airCloud Adapter might be required (available as an accessory). Router shall be able to support 2.4GHz band.
*Feature not available for airCloud Go Mobile App for Single Split.

Cooling & Heating

Queen mum

Show your love and appreciation for the lady of the hour with a special something from our gift guide.

HAPPY
MOTHER'S
DAY

Mother's DAY SPECIAL

A home Inspired by a mother's love

Star Awards fave Jayley Woo's 4-room HDB unit is a beautiful ode to her journey of self-discovery and motherhood.

TEXT
Sean Yee

PHOTOGRAPHY
Frenchescar Lim

Nothing in Jayley Woo's quaint haven is left to chance. Everything that is presented, whether it is the lovely family portrait that sits quietly at the edge of her television stand, or the cuddly, stuffed toys that rest on her majestic couch, are deliberate choices.

It's almost like an open canvas filled with meticulous yet subtle details that coalesce to form a fully-fledged masterpiece. Not to mention the hints of organic elegance from her wooden furnishings to accentuate the ambience Jayley has carefully crafted for her family and herself.

Beneath her keen attention to detail lies a profound love for her one-year-old daughter, Jan. Upon entering her home, you're immediately greeted by a set of cushions on her sofa spelling out the word "LOVE". Surrounding her living space are easy-to-miss artefacts of her most significant moments as a new mother, including Jan's hand-and-foot prints captured and cemented on a frame when she was born.

Her home isn't just a conventional contemporary space. It is meant to be a narrative detailing Jayley's own life journey, a realm where her past, present, and future can converge for her to finally feel grounded, to feel at peace.

We sat with the gregarious actress, influencer and mother to find out how her home ties in with motherhood and family.



Jayley's approach to homemaking is best encapsulated by her love for her family.



“As a content creator, work for me is everywhere. So, I need a space that is comfortable for me to stay grounded, to focus, to be fully me.”

Jayley's office space is surprisingly minimalist, with little clutter to distract her from the work that matters.



What has it been like as a new mother?

Honestly, I came into it without expecting much. It's a surreal experience for sure, but it's kind of one of those dilemmas when you don't know what you don't know. And I had done all the research to prepare myself, only to end up in unpredictable situations! If I've to describe it, motherhood really is akin to being thrown into a wide ocean. There isn't any lifebuoy or raft to grab onto. You're left to swim on your own.

It gets easier, though. Time flies incredibly quickly and, soon, I realise that the whole experience isn't so scary after all. Days would become months in the blink of an

eye, and every passing month is a reminder that I'm getting the hang of it! Right now, I would think I have finally caught on to a raft and am on my way to shore. Sure, there are bad days, but everyone has those.

What do you love most about Jan?

Everything! I believe that a child picks their mother based on her merits and affinity, and I am so grateful that Jan picked me to be her guardian. To me, she's perfect.



What do you love most about being a mum?

I cannot overstate how blessed I am to have Jan. It may sound clichéd, but the connection between a child and a mother is just so boundless and timeless. And it isn't just a one-sided exchange. I have found a whole side of me that I have neglected for a long time. Through this journey, I have learnt to be compassionate, empathetic, and patient. It's almost like a literal and metaphorical rebirth, where I moved up to another phase of life with a better version of myself! Motherhood is like a journey of self-discovery, a continuing desire to be the best person for my daughter.

Her kitchen and living spaces are seamlessly connected to make her home feel remarkably open and free.

Half-glass panels accentuate the illusion of open space, contributing to the home's contemporary vibrancy.



A home centred around comfort and openness empowers the enterprising professional in Jayley to be her best.



Having become a mother yourself, what are some life lessons from your own mother that you have grown to understand and appreciate?

Her guidance, support, and unconditional love. It's eye-opening how far parents are willing to go for their kids. They may not say it, but I learnt that love isn't always something that is vocalised. It can be wordless, but enduringly affirmative acts of care.

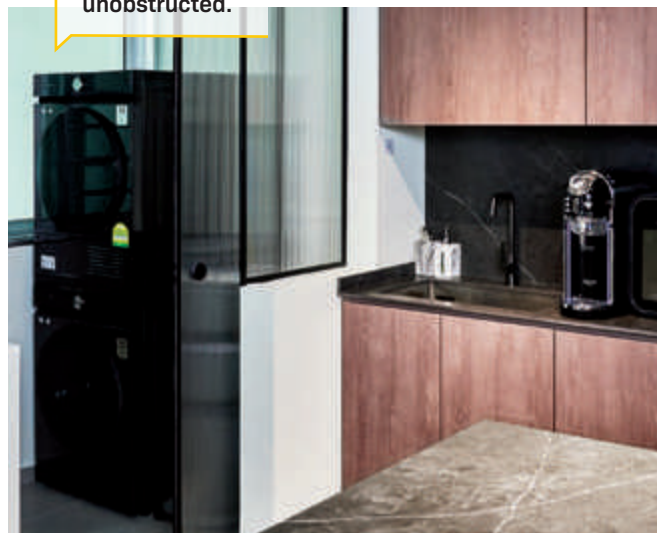
How has motherhood influenced your professional pursuits?

I'm deeply career-minded, so as you would expect, it wasn't easy to take a step back from something I love doing. The itch to return to acting is always there. But acting requires commitment, and I want to be there for my daughter during her formative years. As of right now, content creation is really where I'm at.

What were some main themes that you wanted your home to embody?

I didn't really have a core theme in mind, except that the home should be cosy and liberating. As a content creator, work for me is everywhere. So, I need a space that is comfortable for me to stay grounded, to focus, to be fully me. Chaos should be the antithesis of my home's characterisation. I like to describe it as a 避风港 (bì fēng gǎng, translates to "a safe harbour"). But we also wanted something organic, something authentic. That's why some of our furniture is made from resin wood, for that oaky and authentic ruggedness.

Bulky household appliances are tucked neatly to the side so that the home remains purposeful and unobstructed.



What inspired this colour palette, pairing cream white with charcoal black and caramel brown?

Our resin wood furniture gives our home that rich, earthy accent. Cream white contrasts really nicely with the chestnut brownish hues from the more organic furniture.

How do you keep your place so uncluttered?

Our interior designer suggested that we revamp the layout's space so that our home's various spaces are intertwined. That meant breaking down walls and reconstructing them so that the common spaces can breathe. We also experimented with glass partitions for our office space so that it doesn't feel so distant from our living spaces.



Does the design of your apartment allow for ample storage space?

As a content creator, I do need a lot of storage space, but I didn't want it to conflict with my home's aesthetics. We opted for wood brown fluted wall panels to not only complement our home's colour tone, but also act as storage doors that open up. In fact, even the entrance to our household shelter is hidden behind one of the panels!

Which household appliance did you give most thought to?

I cannot overstate how important it is for every household to have a sturdy and high-powered fridge. A good fridge is able to contain the odours that typically emanate from raw produce. Because our living space and kitchen area are linked, any odour will easily permeate the entire house if left unchecked. That's where an efficient fridge comes in – you don't want your entire home smelling of raw meat!

Charmingly unpretentious and practical, Jayley's bedroom is focused on just one thing — relaxation.



Her very own serene enclave, this quaint lounging corner allows Jayley to rest up after a long day.



“Finally, I have a living room that I can call my own, and just that alone delivers this satisfying sense of freedom that I treasure.”



Celebrating Over 70 Years

Door and window sealing systems that protect your home from noise, smoke, fire, rain, insects and more.



Established in 1950, Raven Products is an Australian family-owned and operated company that pioneered the door and window seal industry in Australasia. Raven has grown to become one of the most trusted brands in the building hardware industry, providing innovative, quality-tested and certified door and window sealing systems for architects, designers, engineers and builders. The Raven brand is synonymous with quality, value and service, which is why Raven is the brand that is constantly relied on and recommended in Australia and overseas.

SERVICE AND ADVICE YOU CAN TRUST

When architects, engineers and builders are faced with door and window sealing challenges in design, compliance or function, they turn to Raven.

SOLUTIONS ON YOUR DOORSTEP

With modern despatch centres in Australia and Asia, we can deliver tailored sealing systems around the corner or across the globe. Raven's advanced ISO 9001 quality management production systems can build and deliver products weeks ahead of other manufacturers.

OUR NAME IS OUR GUARANTEE

We will never put our name to a product until we are fully satisfied that it is not just easy to fit and highly durable, but it can withstand appropriate extremes and complies with the latest building code regulations and standards.

QUALITY CONTROL THAT SETS NEW STANDARDS

Our commitment to quality extends from research, development and testing through to manufacture, delivery, ease of application, durability and after-sales service, regardless of the project size or complexity.



Scan here to find out more

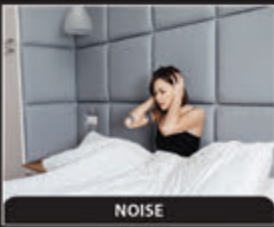


CLEAN QUIET SAFE

Is our perfect dream home



THE PROBLEMS



RAVEN SOLUTIONS

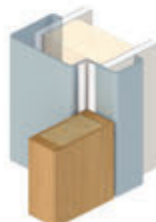
Main Doors



H
Heavy Duty



RAVEN RP35SI
Automatic Bottom Seals



RAVEN RP120
Perimeter Seals

Bedroom Doors



L
Light Duty



RAVEN RP60
Automatic Bottom Seals



RAVEN RP59
Perimeter Seals

Living with Mum and loving it

Mei Xin
soaking in the
cool ambience
of her spacious
living room.

**Gregarious
Actress
Mei Xin and
her mum
share a
home and an
unbreakable
bond.**

TEXT
Sean Yee

PHOTOGRAPHY
Frenchescar
Lim

Upon meeting *Oppa, Saranghae!* and *The Diam Diam Era* star and her mother, one cannot help but envy the endearing chemistry they share. And it's no wonder – actress Mei Xin's ebullient and lively demeanour is tempered with her mum's controlled yet affectionate mien.

Their distinctive dynamic is best displayed in the home that they both work hard to maintain. Their capacious living room continues a storied tapestry of their enduring bond, hosting everyday chatter and laughter that reverberate through the home's various open spaces. Yet, as much as they enjoy each other's company, Mei Xin and her mother also appreciate maintaining their individuality amid a predominantly communal-oriented home.

As the family's chef, her mother steers a tight ship in the kitchen, with its sleek cabinetry and a minimalist kitchen counter that is sophisticated and seamless. True to her outgoing and intrepid nature, Mei Xin lets her creative vision go wild on her balcony, which she has transformed into her own experimental playground.

We sat with Mei Xin to better understand how her tight-knit relationship with her mum has enabled and empowered her to create a beautiful living space befitting that bond.

“I was always fascinated with the timelessness, boundlessness and ruggedness of European material culture. Hence, you'll notice...fittings made from a blend of organic and traditional elements such as stone, marble and cured wood.”



You shared that your initial foray into acting was overwhelmingly stressful.

Just imagine having everything about yourself be criticised, demeaned and overlooked every single day – it's gut-wrenching. No matter how hard I tried, no matter how much I did, it was simply never enough. I felt so lost and helpless, living a life that was either overshadowed by frequent crying fits or blurred by an unhealthy drinking vice. It was brutal.

Mei Xin's treasured sanctum with its minimalist yet sophisticated flair.



That sounds tough. Your strong bonds with your mum must have helped you during that bleak period. Tell us about your relationship with your mother.

So, my mother didn't exactly have the happiest of childhoods. Despite that, everything that she does for the family, she does with warmth, love and kindness. She's one of the strongest and most optimistic people I know. And like most Asian parents, her affection is subtle and largely unspoken. Little acts of love, like clearing the trash and reminding me to eat healthier can easily be left unnoticed when you don't look or listen properly enough.

No matter how exhausted or busy I am, I'll always tell my mum, "I see your acts of love. 谢谢妈妈! (Thank You, Mummy!)."

How has that mother-daughter dynamic changed over time?

I had a temperamental streak as a child. Even the smallest things, like my mum tying my hair in a manner that I did not like, would make me flare up at her. "Why never tie properly," I would yell at her. I don't remember when, but one day I just decided that enough was enough. My mother deserved better from me.

Why did you choose to pursue interior design academically?

I am and have always been a creative soul. You know how some people are just naturally and unexplainably



Adding authentic and contemporary touches is a resonating theme for Mei Xin, who loves the warmth of oak brown and the elegance of cream white.

talented cooks? Well, it's like that – except for me, it's architectural. Even today, I jump at every opportunity to help my niece with her creative projects! There's this irreplaceable catharsis in transforming unassuming materials into something beautiful solely based on an abstract vision.



“ Don't be afraid to curate a design vision that encompasses hints of your personality! ”

Speaking of storage, it doesn't seem like your home has a dedicated storeroom.

We do! It's hidden behind two symmetrical panelled walls by the television set. And don't let its deceptively narrow exterior fool you – they safeguard a surprisingly huge storage space! Who says you must compromise elegance for functionality when you can have both? As for bulkier items, I design my home around them.

By combining functionality with artistry, the cabinets create new storage spaces that uplift the rooms they inhabit.

As one who has studied interior design, what advice can you give to aspiring homeowners?

Don't be afraid to curate a design vision that encompasses hints of your personality! In fact, have that guide your overall vision of how you like your dream home to not just look but feel when you step into the door. I was always fascinated with the timelessness, boundlessness and ruggedness of European material culture. Hence, you'll notice that my home boasts open spaces, high ceilings, and fittings made from a blend of organic and traditional elements such as stone, marble and cured wood.

Make sure to look out for inspiration from Pinterest!



The eclectic balcony is a creative space that embodies Mei Xin's quirky tastes.

Your garden space really uplifts your home. Was it part of your original design layout?

It's funny because it's actually my first attempt at gardening! I love how plants uplift the home with a beautiful variety of vivid hues and earthy accents. More importantly, it functions

as part of a creative space that embodies my idiosyncrasies! The brick walls and marble tiles really enhance the space with the boldness that characterises the Art Deco movement. And the pole attached with magnets from the various countries I have visited, alongside my plants, imbues the balcony with a sentimentally human flair.





Is your mother an avid cook? How did you go about creating her kitchen space?

We wanted a space that is minimalist, yet elegantly functional. Our kitchen has plenty of cabinets for storage, and a wide space for us to move around and socialise!

My mother loves to cook and is a staunch practitioner of the famed 'agak agak' technique! Nothing about her recipes is scripted. It's all about the "feels". I especially love her Fried Bee Hoon. No matter how hard I try, I just can't seem to replicate it!



Never underestimate the convenience and quality-of-life improvements that come with a great washing machine.

Cooking at Home with Mei Xin and Her Mother



21

Fried Bee Hoon

Ingredients:

300g Vermicelli Rice Noodles (Bee Hoon), soaked in water
 ½ cup Julienned Carrots
 ½ cup Diced Onions
 2 tablespoons Dark Soy Sauce

FOR THE SAUCE

2 tablespoons Light Soy Sauce
 1 tablespoon Sugar
 ½ cup Water



- 1 Mix light soy sauce with sugar and water in a bowl. Set aside.
- 2 Add oil to a pan over medium heat. Once hot, toss in the onions.
- 3 Once the onions are translucent and soft, add in the sauce and mix well with the noodles. With a chopstick, stir your noodles constantly to prevent them from sticking together.
- 4 After the noodles are evenly coated with the sauce, put in the carrots. Add dark soy sauce as well as 1 tablespoon water. Cover your pan with a lid for your carrots to soften.
- 5 Plate with fried onion crisps and, optionally, a fried egg.



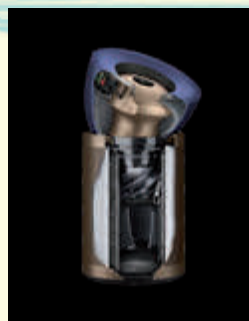
Clean up your act

These products make it easier to keep large areas hygienic and spotless.

In inimitable fashion, Dyson's two innovative products are designed to help you maintain a cleaner, more sanitary home.

BREATHE PURER AIR

The Purifier Big+Quiet Formaldehyde is Dyson's most powerful air purifier yet. Made for large spaces (up to 100m²), it uses Cone Aerodynamics to deliver 10-metre projections, thereby ensuring that clean air is projected to every corner and dirty air is displaced back towards the filter. The appliance is also quiet, producing just 56 decibels of noise.



Additionally, it features a large HEPA H13-grade particle filter which captures 99.95% of pollutants, including dust and allergens as small as 0.1 microns. The larger filter lasts up to five years and can be replaced separately with the carbon filter, reducing unnecessary waste.

The new K-carbon filter combats gases, specifically nitrogen dioxide, which can be emitted from activities like cooking or that enter the home from outdoor sources, like road traffic. This means your family will

breathe easier.

The Selective Catalytic Oxidation (SCO) filter is designed to break down harmful formaldehyde molecules into tiny amounts of water and carbon dioxide. It then re-generates with oxygen from the air to keep destroying formaldehyde continuously, without needing replacement.

The Dyson Purifier Big+Quiet Formaldehyde is available in Bright Nickel+Prussian Blue and Prussian Blue+Gold.

GET SPOTLESS FLOORS

Want an easier way to get hard floors sparkling clean? Invest in the Dyson V12s Detect Slim Submarine, an all-in-one, wet-and-dry, versatile and multifunctional machine.

The wet roller-head delivers the right amount of water to effectively remove stains, spills and small dry debris like crumbs. Its eight-point hydration system comprises eight water jets, evenly spaced along the roller, to release precisely 18ml of water every minute to wash floors evenly without leaving excess wetness.

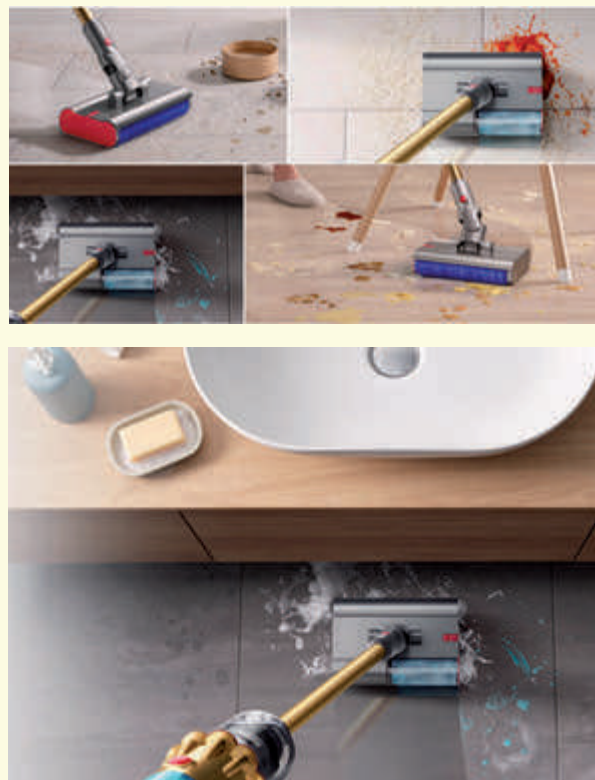
The motor-driven microfibre roller removes spills, stains and debris, while a durable plate extracts contaminated water from the wet roller and deposits it into a separate

waste-water tray for easy emptying.

The clean water tank has a capacity of 300ml, ideal for cleaning areas up to 110sqm (the size of an average 5-room HDB flat).

The V12s is designed for edge-to-edge cleaning and effortlessly gets into hard-to-reach spots.

Other tools include a Fluffy Optic™ Cleaner Head, which projects light to illuminate particles on floors; Dust Sensing, which provides reassurance that you have deep cleaned; Dyson's Hyperdymium motor, which delivers 150 air watts of powerful suction; Dyson's HEPA filtration system, which captures 99.99% of particles as small as 0.1 microns; and a Hair Screw Tool to pick up long hair and pet hair with ease.



Purifier Big+Quiet
Formaldehyde



Scan here to find out more

V12s Detect Slim
Submarine



Scan here to find out more

Gifts to make Mum's day

Sure, it's the thought that counts, but caring gifts also speak volumes. Here's our curated list of gift ideas that Mum will love.

TEXT
Leslie Ong

24

Impress Mum on Mother's Day with a gift that shows just how much you love her and that's stylish and useful to boot. If you're still trying to figure out what to buy for Mum, this list of ideas may be just what you need.

TLC for hair and scalp

The Dyson Supersonic Hair Dryer does its job efficiently, leaving a smooth, frizz-free finish without damaging Mum's tresses or drying out her scalp. The hair dryer comes with four magnetic attachments, including a flyaway smoother to leave locks sleek and shiny; a wide and thin styling concentrator which lets her style one section of hair at a time without disrupting the rest; and a gentle air attachment which provides a gentle, cooler airflow (great if Mum has fine hair or a sensitive scalp).



A cool sip

In Midnight Black, Cream White and Mint Green, the Kadeka Wine Cooler KP115ER-GR keeps 10 to 12 wine bottles (and other chilled goods) perfectly cool (between 5°C and 20°C). It houses two wooden shelves and one acrylic tray, double low emissivity glass, and a digital control panel with LED light. It's also light and compact, weighing just 17kg.



Lie back and relax

Soft yet sturdy and super-comfortable, the Kylian Single Power Recliner UJ4243-21BSUSCOC-Ocean is the perfect chair to help Mum relax at the end of a long day. Upholstered in fabric that's easy to maintain, the chair offers a high back, padded armrests, and a leg rest that can be extended whenever Mum wants to lie flat or put her feet up.



For a more beautiful smile

Electric toothbrushes offer a gentler, more precise clean. You can expect this and more from the Philips Electric Toothbrush HX9992/22-Sonicare. Equipped with SenseIQ technology, it senses pressure, motion and coverage up to 100 times per second as you brush.

It also adapts the intensity if you push too hard. The bristles are long and angled to help remove plaque and clean the gums, while the triangular tips work to remove stains.



Skin deep

Help Mum address common complexion issues like uneven skin tone, redness (rosacea), acne, spider veins, pigmentation and sagginess with JOVS Blacken PRO DPL Photorejuvenation Skincare Device. The world's first at-home DPL (Dynamic Pulsed Light) facial treatment skincare device, it combines laser and intense pulsed light (IPL) to stimulate collagen production and tighten skin. Offering three modes, for full-face rejuvenation, redness, and spots and pock marks, the handheld tool is non-invasive, non-ablative and painless to use.

Pressed to perfection

If Mum travels a lot, she will appreciate this compact and versatile Tefal Garment Steamer 1300W DT2022, which provides on-the-go garment care. This portable 1300W steamer delivers powerful steam in just 15 seconds to refresh clothes, and has an innovative reversible pad system that allows her to switch between lint removal and gentle steaming sides to suit all fabrics. An easy-fill 70ml tank provides up to 20g/min of continuous steam. Available in a variety of cheery shades like Sunshine Yellow and Watermelon.





6 things you need to create a home spa for Mum

It's easier than you think to give her a spa experience in the comfort of her home.

TEXT
Su-ying Chen

Mum deserves to put her feet up once in a while and relax in a serene space, and you can't go wrong with treating her to a massage or facial at her favourite spa.

But think about it: What if Mum could recreate the spa experience in the comfort of her own home? That way, she can pamper herself as and when she needs a little pick-me-up.

Here's how.



1

Set the scene

Pick a corner or room at home for Mum to relax. The space should be clean, uncluttered and quiet so that she can really unwind. Set it up like a spa treatment room (or as close to it as possible) with an armchair and a footstool or even just a few large cushions on the floor if you're short on space. Enhance the atmosphere with aromatherapy aids, or add a small speaker if Mum wants to listen to soft mood music.

2

Choose soft lighting

The right lighting can enhance Mum's home spa treatment. Instead of harsh or bright fluorescent light, opt for a small table or standing lamp with warm lighting or flameless LED tealight candles (these are battery operated and a lot safer than regular candles).

3

Making scents

Scents play a powerful role in helping to transform our mood. Different scents evoke different emotional responses. Citrus and peppermint fragrances, for instance, are uplifting and refreshing; geranium and eucalyptus are warming and grounding; and lavender and rose are comforting and mood balancing. Depending on Mum's favourite scents, you can create a scented spa space for her using an aromatherapy oil diffuser or scented candles.



4

Get her some comfortable clothing

Mum will definitely feel like she's at a professional spa if she has the right clothing and footwear. They needn't cost a lot, but a simple, loose tunic or robe and a pair of fluffy slippers can help her feel more comfortable.



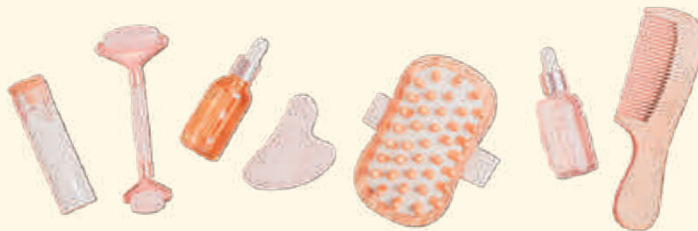
28

5

Add these skin-loving tools and gadgets

A facial steamer can help Mum cleanse her skin more deeply. A facial steamer, which emits a fine mist of steam to soften the skin, will stimulate blood circulation in the face and unclog pores.

There are also a few handheld devices she can try, depending on her skin requirements. For example, a face roller is designed to massage the skin to improve lymphatic drainage and give the face a more sculpted and contoured look. Some face rollers include a suction attachment, which is handy for cleaning out the pores. Other useful tools include a gua sha face scraper and LED face masks, which claim to address a variety of skin issues, from sagging and hyperpigmentation to acne and wrinkles.



6

Bring out the refreshments

Mum can wrap up her spa afternoon with some healthy snacks and beverages. Cookies, nuts, herbal tea and coffee are all good options.



JOVS



VENUS PRO II HAIR REMOVER

2-In-1 Device
Hair Removal + Skin Rejuvenation

In 4 Weeks
Visible Results

Patented 330° Rotating Head
Achieve total body coverage with our versatile and flexible head

TLC for your skin

High-tech devices that target common issues, like wrinkles, age spots and excess hair.

If you want to address common skin concerns but don't want to undergo uncomfortable or invasive treatments, these devices from JOVS can help.

ALL-IN-ONE SOLUTION

The JOVS Blacken PRO DPL Photorejuvenation Skincare Device uses Dynamic Pulsed Light (DPL) – an advanced treatment combining laser and intense pulsed light (IPL).

The world's first at-home DPL facial treatment skincare device, it evens out skin tone, reduces redness, acne and age spots, and stimulates collagen for an anti-ageing, skin tightening and lifting effect.

CUSTOMISED SKINCARE

The JOVS 4D Laser Light Therapy Mask customises your skincare routine with three unique modes, and provides several benefits including anti-ageing, wrinkle

and blemish reduction, increased firmness, improved dark circles, and skin brightening.

Clinically proven to reduce wrinkles in just four weeks, this cutting-edge device utilises patented nano molecular food-grade silicone for reduced irritation, ensuring a safe and highly efficient skincare experience.

ONE-STEP HAIR REMOVAL

The JOVS Venus Pro II Sapphire Hair Removal Device integrates medical-grade continuous pulse technology and optimal pulse technology (OPT), a staple in beauty salons, to break the hair regrowth cycle.

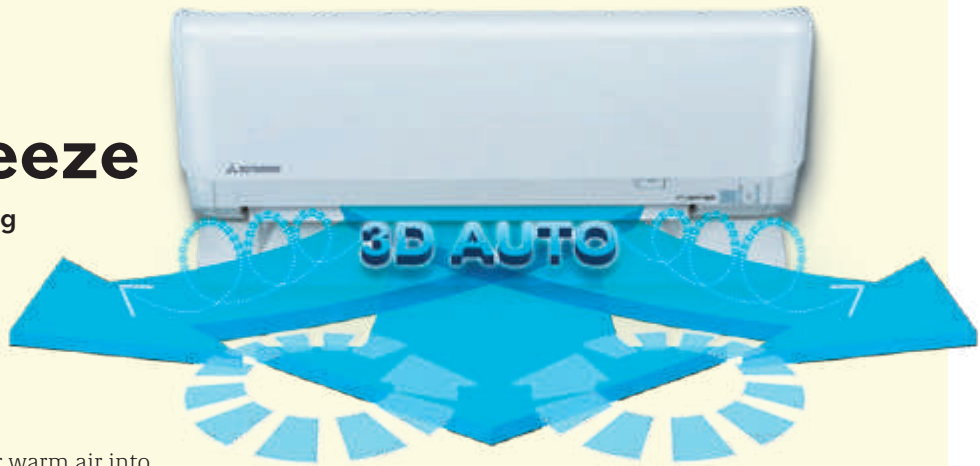
Equipped with an innovative sapphire cooling system, it is comfortable to use and safe for sensitive areas.



Scan here to find out more

Like a cool breeze

Enjoy comfortable and effective cooling in all your rooms, thanks to this air-con's special features.



You want your air-con unit to emit cool or warm air into your room and not directly at you. Mitsubishi Heavy Industries (MHI) specialises in air-conditioners that do this and a lot more.



WIDE-ANGLE REACH



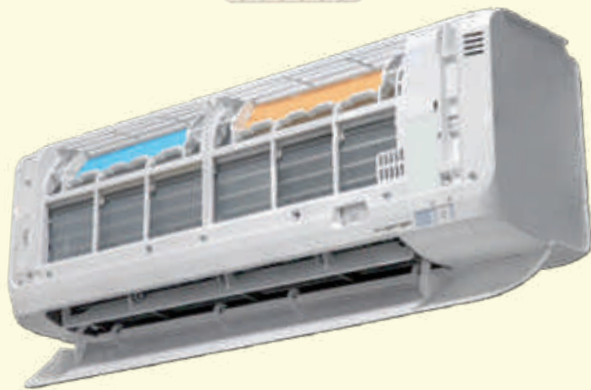
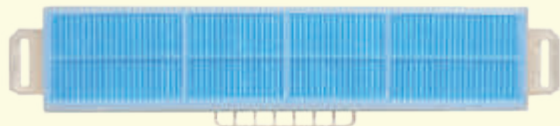
CONTROLLED AIRFLOW

The 3D Auto Vertical + Horizontal feature automatically controls airflow volume and airflow direction, so that comfortable air-conditioning of the entire room can be done effectively. The cooled air flows directly to the ceiling in cooling operation mode, and not directly at the occupants of the room. This cooled airflow comes via the ceiling like a cool breeze. In the heating mode, warm air flows downward to the floor directly and then spreads along the floor, achieving optimum comfort.

The airflow direction from the unit's right and left louvres can be controlled individually. Eight different airflow patterns can be selected.

CLEAN AIR

MHI's air-cons have an Allergen Clear Filter to deactivate allergens and bacteria, and a Nano Air Filter which can remove 99% of pollutants as microscopically small as PM 2.5.



CLEANER AIR FLOW



JETTA
Your Mighty Jet Powered Home Protector



Scan here to find out more

The same aerodynamic analysis technology used in developing jet engines has been applied to the design of air channels in MHI's air-cons for the best air circulation. The result is a uniform gentle breeze in every corner of the room.



Tefal's Most Powerful* Steam Generator Light your way to Perfect Results



GV9820 Pro Express Vision
Steam Generator

NOW
\$599

Usual Price: \$999

SAVE \$400



180g/min steam output,
up to 9 bar pressure



Smooth gliding with
Durilium Airglide
Autoclean soleplate



Never miss out any
creases with LED light

www.tefal.com.sg

[TefalSingapore](#)

[TefalSingapore](#)

*Compared with Tefal range

The power of steam

Get your ironing done in double-quick time with
Tefal's Pro Express Vision Steam Generator.



EFFICIENT PERFORMANCE

Compared to a normal steam iron, Tefal Pro Express Vision Steam Generator GV9820 is equipped with a continuous steam output of up to 180g/min, 750g/min steam boost and steam pressure up to 9 bars for even the toughest wrinkles and creases. Tefal's Durilium Airglide Autoclean soleplate ensures optimal steam diffusion for high-efficiency results and is highly scratch-resistant and remains stain-free over time.

NEVER MISS A CREASE

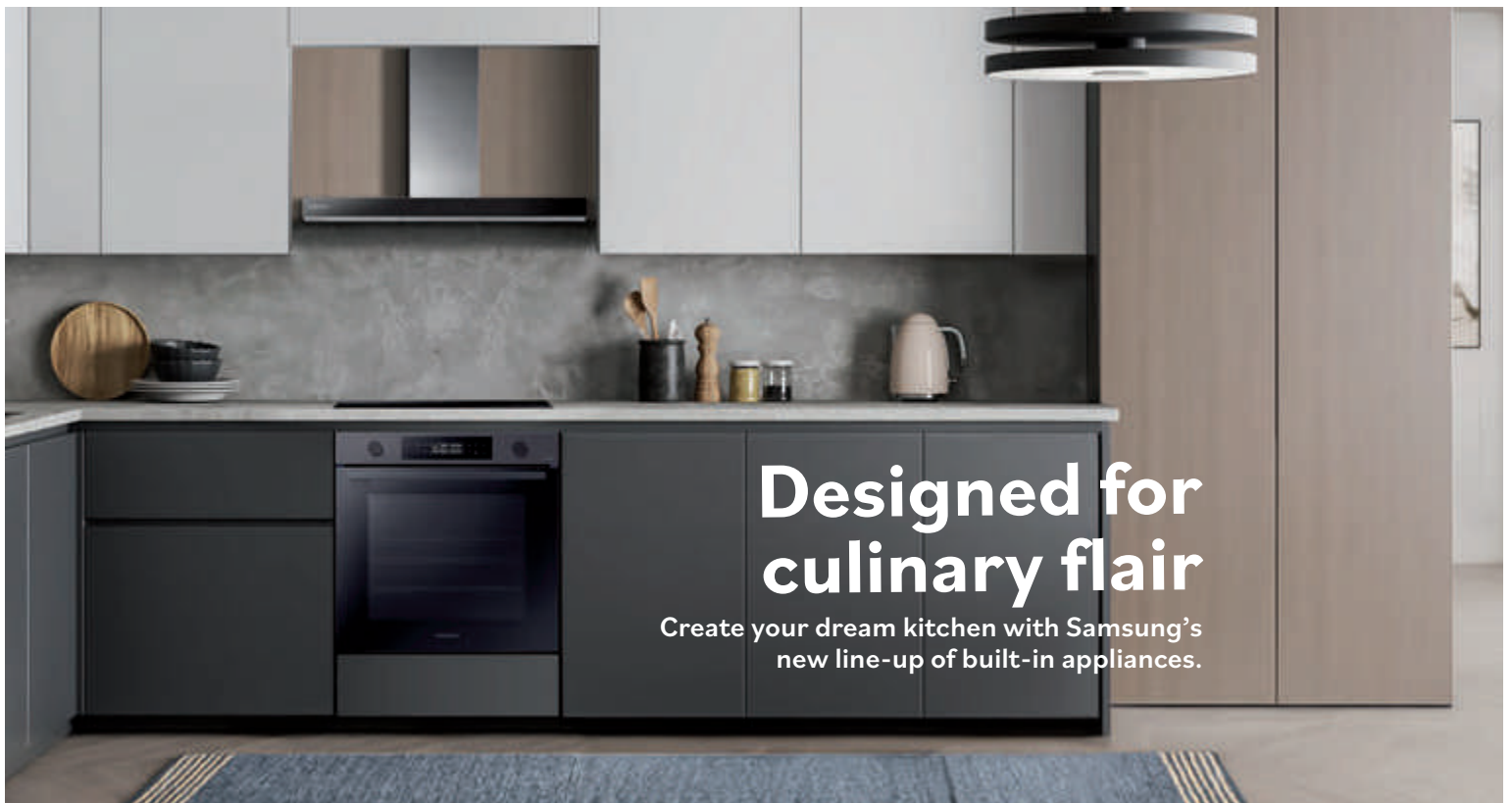
Equipped with Smart LED Vision system, a light on the tip of the iron comes on automatically when the iron is in the horizontal position, to give you perfect visibility so you'll never miss a crease.

EASY TO USE

Perfect Steam is made easy with Smart Steam system, where steam is released automatically when you start ironing and cuts off when the iron is in an upright position.



Scan here to find
out more



Designed for culinary flair

Create your dream kitchen with Samsung's new line-up of built-in appliances.

Show off your personal style with Samsung's expanded range of built-in ovens, induction hobs, and two distinct hood options: the powerful wall-mount hood and space-saving telescopic hood. The line-up offers practicality and functionality without compromising on quality.



PERFECT YOUR CULINARY EXPERTISE

The Dual Cook feature is available in selected built-in oven models, and it enables the independent operation of the upper and lower oven zones, providing users with greater flexibility and precision in their cooking experience. The ovens come with an extensive range of auto programs to help simplify the cooking process and take the guesswork out of meal preparation, letting you enjoy hassle-free cooking everytime.



FOR CHEF-INSPIRED COOKING

The new induction hob options give you extra cooking flexibilities to whip up a variety of dishes with Flex Zone Plus. This single flex zone accommodates various cookware, including large and elongated

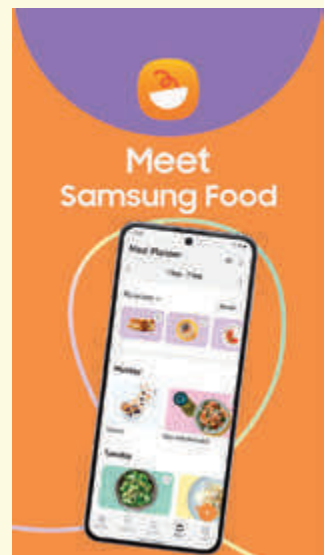
dishes¹, allowing you to effortlessly prepare a range of dishes while ensuring consistently cooked culinary masterpieces.

HOODS FOR DIFFERENT SPACES

The range of hoods comes in the new telescopic option, designed for kitchens with space limitations and seamlessly integrating into cabinets for a discreet solution. The wall-mount hood is perfect for diverse kitchen designs seeking a touch of brilliance. Both hoods feature robust extraction capabilities and adjustable power levels.

With the newly launched AI-powered Samsung Food App platform², home chefs get to enjoy a seamless all-in-one culinary journey. Your personalised kitchen assistant lets you discover new dishes, create tailored meal plans, and even send recipes directly to your oven³ – all from the convenience of your mobile.

Discover how you can unleash your culinary creativity with Samsung's new range of built-in appliances, and simplify the cooking process in the most delightful way.



¹ Selected models only. Based on the 60cm models. Each Flex Zone Plus area can accommodate cookware of up to 38x21cm.

² Requires installation of SmartThings App on compatible Android or iOS device, with Android 6.0 and higher or iOS 10.0 and higher, and Wi-Fi® connectivity to the mobile device. A Wi-Fi® connection and a Samsung account are required.

³ Only supported on Samsung ovens with SmartThings connectivity.



Scan here to find out more

BEST NEW FINDS

Support matters

The right pillow can make a world of difference in the quality of your sleep.

The dish on dishwashers

Should you add a dishwasher to your kitchen? Let's explore some of the benefits of owning one.

—
TEXT Melanie Wong

34

When it comes to getting our crockery, cutlery and cookware super-clean, handwashing with a scrubber and a splash of detergent has always gotten the job done. But lately, more and more of us are recognising the advantages of using a dishwasher.

Dishwashers aren't a cheap investment but they are no longer only found in affluent households. And it's easy to see why: Besides their obvious convenience (no more standing by the sink for ages washing your dishes one by one), dishwashers use less water – about 5.67 to 18.9 litres for the whole cycle compared to 8.3 litres per minute of handwashing – meaning you save more on your monthly water bill. The majority of dishwashers on the market are also designed to reduce energy consumption, so you save on electricity, too.

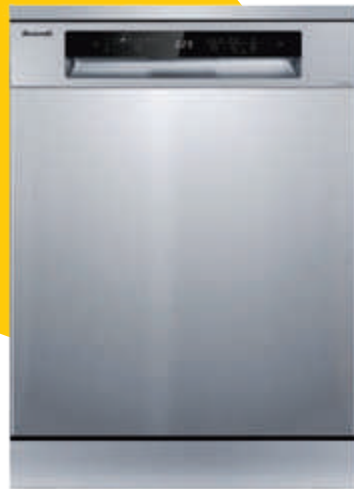
And you don't have to wonder if dishwashers clean as well as handwashing. They do. In fact, they probably get your dishes cleaner. Designed with powerful water jets and rotating spray arms, they're very effective at removing baked-on food, stains and greasy spots – and you don't have to rinse or scrub your dishes beforehand.

Dishwashers also use high-temperature water and steam, which not only cleans deeply but also helps to remove disease-causing bacteria from your dishes.

Another great advantage of owning a dishwasher is that it keeps your kitchen clutter-free. No more messy pile-ups in and around the sink.

And finally, because you will no longer have to deal with harsh dishwashing detergents, owning a dishwasher translates to softer, smoother hands.

Here are four dishwashers worth investing in.



Sleek in silver

This 60cm freestanding dishwasher from Brandt (BDF54DXA) boasts 15 place settings (typically, one place setting equates to one small and one large plate, a bowl, a cup and cutlery), making it ideal for a three- or four-person household. It also comes with eight washing programs – for example, Eco, Auto, Hygiene+, Glass, and Rinse. And with six washing temperatures to choose from, you can ensure that your dishes come out as clean as can be – for example, the highest temperature option (70°C) is great for cutting through greasy residue. Other worthy features include a powder detergent option and an extra drying function.



Need for speed

Can't wait forever to get your dishes clean? Samsung's freestanding dishwasher (DW60A8050FB/SP) in bold black frees up your time with a fast, 60-minute full wash and dry cycle, so it's perfect for smaller loads of lightly soiled items that don't need really intensive cleaning. And even the most hard-to-dry items are cupboard-ready at the end of the cycle, thanks to the Auto Door Open feature. Once the cycle has finished, the door opens automatically to let the steam escape, leaving everything perfectly dry.



BEST NEW FINDS



Tough on even the dirtiest dishes

You can trust Whirlpool's Freestanding Dishwashers to get your dishes sparkling clean. Both models employ 6th Sense technology, which automatically senses how dirty the dishes are and adapts the cycle time and water pressure accordingly. They also have a Power Clean Pro feature, which uses powerful water jets on the rear of the machine to deliver supreme cleaning results. For extra oomph, the Sanitization option eliminates 99.999% of bacteria for more hygienic dishes. Choose from a range of programs, depending on your cleaning needs. When a program is over, the door opens automatically to allow dishes to dry naturally.



36

A steamy affair

For sparkling dishes and less water spots, you can count on the TrueSteam feature in this LG dishwasher (DFB425FP), which ensures that boiling water reaches the entire surface of every dish inside the tub. The pure water particles of steam also help reduce water spots. Other highlights of this dishwasher are the Multi-Motion spray arms that rotate back and forth while spinning, and the high-pressure jets that power-clean dishes from multiple angles, so that your dishes always get clean the first time. The flexible and easy-to-adjust racking system can accommodate any load.



To check out the full range of dishwashers available, scan here



POWERFUL, EFFORTLESS DISHWASHING WITH LARGE CAPACITY



PowerClean Pro

60%¹ more powerful cleaning with 6th SENSE PowerClean Pro



Maxi-Tub

Flexible and easy loading with Maxi Space



Natural Dry

Automatic door opening for natural drying



Modular 3rd Rack

Ideal for cutlery & utensils, with sliding modules

¹Percentage of water power calculated with Powerclean Pro option activated vs non activated.



FREE

Limited to first 60 customers



MS2004B

20L Solo Freestanding Microwave Oven (worth \$129)*



NEW

60cm 15 Place Setting Free-standing Dishwasher

WDFS3L5PBSSG (Charcoal Black)
W x H x D | 600 x 850 x 590mm



NEW

60cm 15 Place Setting Free-standing Dishwasher

WDFS3L5PIXSG (Starlight Silver)
W x H x D | 600 x 850 x 590mm

Terms & Conditions apply: (1) Promotion is limited to first 60 Gain City customers. | (2) Whirlpool reserves the right at its absolute discretion to substitute the gift with that of similar value, at any time without prior notice. | (3) The value of the gift is correct at the time of printing.

Ultra cleanliness with PowerClean Pro

Freestanding dishwashers that get your dishes perfectly clean.

If you need extra help with your dishes, the newly launched Whirlpool Freestanding Dishwashers may be just what you need. Each model comes with 3 racks with 15 place settings, and a flexible rack design to load all cutleries and utensils easily. The intuitive touch control offers greater accessibility to operate the dishwasher effortlessly.

360 POWERFUL CLEANING REMOVES SOILS IN EVERY CORNER

The PowerClean Pro design with its unique design of powerful clean pro

jets coupled with 3-layered spray arms, offers up to 30%¹ more washing space in the lower rack with its vertical slats, while yielding perfect cleaning results by using 60%² more powerful water jets to remove tough dirt from all around your dishware.



Thanks to the 6th Sense intelligence, the machine is able to sense the soil level to optimise water pressure, water volume and cycle time, saving resources by up

to 40%. The 6th Sense auto program caters to all your needs, with Intensive, Mix & Fast programs, depending on the soil level, and Rapid and Half Load programs for fast wash options.

SPEED DRYING

When a program is over, the automatic door open system will automatically open the door to ensure better natural drying. This system delivers 90%³ better drying results. With the extra dry option, consumers are free to choose their drying requirements. The unique Plasma (slip-drop) treatment enables an improved drying process of the flexible 3rd rack.

MAXI TUB

Thanks to Maxi Tub, this dishwasher provides a larger internal usable space that offers greater ease and versatility to fit all kinds of dishes, including large plates and pots without losing space in the upper rack. This allows multiple loading options with enhanced flexibility.



Starlight Silver



Charcoal Black



Scan here to find out more

¹ Percentage calculated vs the loading space on models of the same Whirlpool range without the PowerClean Pro solution.

² Percentage of water power calculated with PowerClean Pro option activated vs non-activated.

³ Based on Whirlpool internal testing, percentage of energy saving & drying results are calculated with DOS vs non-DOS.

Breezy style

Elegant ceiling light fans that keep your home cool.

When you want the feeling of a cool breeze throughout your home, these Mistral ceiling fans do the job. The built-in LED lights also give your space varying degrees of brightness.

DESIGNED TO ACCENTUATE YOUR HOME

The Space 36 and Solar 36 models measure 36 inches across, while the Space 46 and Solar 46 models measure 46 inches across, making it easy to find a style that fits your home. Each model features three ABS fan blades.

You are also sure to find a colour that goes with your décor, with the Space 36 and Space 46 models available in Black, White/Wood, Grey/White, Grey/Black, and White, and the Solar 36 and Solar 46 models available in Black, Grey/Wood, Black/Wood, Grey/White, and White/Wood.

GO WITH THE FLOW

Using the remote control, you can rotate the fans clockwise for Cool Breeze or anticlockwise for Air Circulator.

SOLAR 36



SPACE 36



SPACE 46



SOLAR 46



Scan here to find out more



SPACE 36 / 46



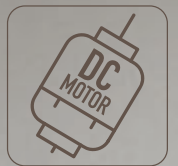
SOLAR 36 / 46



NEW

SPACE & SOLAR SERIES CEILING FAN

mistral



Bathroom design trends to try

How to adapt the latest looks
to make this space your own.

TEXT Sasha Gonzales



The bathroom is one of the most personal spaces in our home, so it's only natural that we'd want it to reflect our personality.

There are many different bathroom styles, from minimalist and wellness-centric to botanical-inspired and luxurious. But while trends in appliances, décor, fixtures and fittings are constantly changing, there is one thing most of us can agree on when it comes to designing the most-used room in our home – it must be where we can find privacy and solitude to refresh ourselves first thing in the morning and relax last thing at night.

With that in mind, we asked Ashton Chong, Manager at Ethan Interiors, for his top tips on how to embrace and personalise the latest bathroom design trends right now.

Add a touch of luxury

More people are choosing to extend the length of their bathroom vanity tabletop because they like the look of it running from one side of the wall to the other and having that extra space, Ashton says. Some homeowners are even installing double sinks to give their bathroom a more upscale, hotel-like feel.

Other ways to give your bathroom a luxurious look without going overboard include installing marble or onyx vanity tabletops, which Ashton describes as timeless; accents of gold or brass for the sink and shower tapware; and touches of leather, such as a tissue box or a hold-all tray, or for the knobs on the vanity cabinet doors.

Screen play

Not impressed by standard shower screens and bathroom doors?

“Fluted glass screens or doors are excellent options to allow more natural light to permeate both from the room to the bathroom and the bathroom back to the room,” Ashton points out.

“These draw attention visually as they reflect light from different angles and depths.”

Window of opportunity

If your bathroom windows are large, you may want to install blinds over them to elevate the room further. Ashton says that this is a growing trend, as more people choose to conceal the standard HDB bathroom window design.

Off the wall

Tiles or other forms of wall and floor covering materials are a good way to change the entire mood or theme of your bathroom.

To create a minimalist vibe, Ashton suggests using large white or plain tiles or even an entire sintered stone slab. This will also reduce the number of visible grout lines in the bathroom. “Those with a flamboyant personality can try having a feature or patterned wall using colourful tiles, like mosaics, Peranakan tiles or mermaid tiles, for example,” he adds.

BEST NEW FINDS

Dark matter

Dark, sombre colours can work really well in bathrooms, Ashton says. If you have ample lighting, a dark bathroom can look luxurious and modern. To add visual interest to the space without too much work, he recommends hanging a unique pendant lamp over the vanity.



42



Going green

A botanical-focused bathroom can give you the feeling of being in a relaxing forest retreat. This look is easily achieved with a wood bathroom vanity, organic shapes, textured rugs, strategically placed pebbles or rocks, reed diffusers, and, of course, flowers and greenery.

Most faux plants these days look realistic, but if those aren't your style and you prefer the real thing, choose money plants, monstera or white orchids, which Ashton says have a better chance of surviving the damp and humid bathroom environment. Bamboo and succulent plants are long-lasting and easy to maintain, too.

Neutral gear

Ashton says that light, neutral colours like white, grey, sand and sage are popular for bathrooms right now because they are soothing. Light colours also make a small space look and feel bigger, so if your bathroom is small, it might help to go with a minimalist colour palette.

Visual treat

No space for a vanity? You can still give your bathroom a stylish, modern touch with the addition of a pedestal cylinder basin. Ashton says that full-height basins also create a unique visual point in the bathroom.

TITANIUM

HEATING ELEMENT
∞ LIFETIME WARRANTY



Achieve a New Level of Instant Comfort
Electric Instant Water Heaters



The heat is on

Water heaters that are safe, energy-saving and beautifully designed in Italy for your homes.

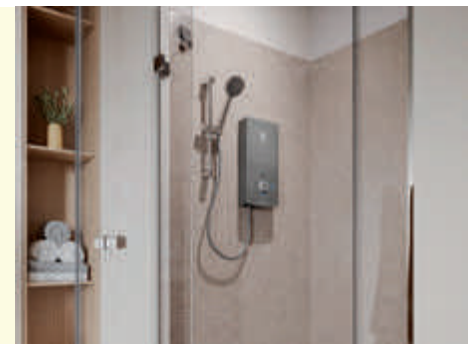
The Ariston range of water heaters is designed for modern homes. The Italian brand, established in 1930, boasts an iconic Italian style and high-quality products that respect the environment.

USE YOUR VOICE

Ariston's Wi-Fi electric storage water heaters come with voice control and are pairable with Amazon Alexa and Google Assistant.

Easily turn your water heaters on or off, set timers, adjust the water temperature and monitor your shower patterns via Ariston NET. The range offers 25% energy savings and features titanium heating elements* with a lifetime warranty.

Wi-Fi models include AN2 TOP 30 Wi-Fi, SL2 30/30 Lux-D Wi-Fi, AN2 15/30 Lux-D Wi-Fi and ANDRIS Lux Wi-Fi 15/30.



INSTANT HEATING, CONSTANT TEMPERATURE

Slim, sleek and stylish and designed by famous Italian designer Umberto Palermo, the range of AURES electric instant water heaters is equipped with Earth-leakage circuit breaker (ELCB) for greater safety and to reduce the risk of electrical shock. Equipped with Constant Temperature technology, this range of instant water heaters saves up to 25% energy while ensuring stable and consistent temperatures throughout your showers.



Scan here to find out more

*Titanium heating element applicable to selected models only: AN2 Top 30 Wi-Fi, SL2 20/30 Lux-D Wi-Fi



**ELEGANCE
WITHIN
REACH**



ROYAL
Instant Electric Water Heater

ROYAL PLATINUM
Instant Electric Water Heater

ROYAL PLUS
Instant Electric Water Heater



FEATURES



AG+ Technology (Kills 99.9% of Bacteria)



Heating Chamber in Stainless-steel



3 in 1 Compact Valve (Rain Shower, Hand Shower, Bidet)

Feel the heat

Durable water heaters that provide antibacterial protection for your family.

With an instant water heater, you can be sure that you'll always get hot water on-demand. Rheem, a specialist in water heaters, presents the Royal Series, a collection of safe, high-performing and user-friendly models.



DELIVERING ANTIBACTERIAL PROTECTION

The latest offerings from Rheem boast three levels of heat gratification – Royal, Royal Plus, and Royal Platinum Instant Water Heaters. Experience the best heat while safeguarding your home with 99.9% antibacterial protection!



Rheem's Royal series is equipped with the antibacterial feature – AG+ lining on inlet and outlet – that kills 99.9% of bacteria.

STAINLESS STEEL HEATING CHAMBER, DIGITAL ELEGANCE, AND MORE...

The stainless steel heating chamber is designed for years of worry-free showers without any leaking problem. Couple that with the digital display that shows both inlet and outlet temperatures, allowing you to precisely monitor the temperature, water flow, and consumption. Plus, stay safe with the 3-in-1 Compact Valve, providing peace of mind daily!

FINISH FIT FOR ROYALTY

Without compromise, all models boast durable ABS casing for lasting performance and durability. Beyond the standard experience, the Royal Plus and Platinum models elevate your bathroom with a stunning rainbow finish and advanced features.



Scan here to find out more

Otena Natural Latex Mattress

- Oxygen plus therapy to relieve fatigue and improve sleep quality
- Individual barrel pocketed spring with motion isolation for undisturbed sleep
- Natural latex to reduce heat accumulation
- Euro pillow top for soothing pressure points relief
- 15 years limited warranty

Limited Time
20% off
& Free Bedding Accessories
(Worth \$218)



* Terms & conditions apply.
While stocks last.

Enhance the quality of your sleep

Our dreamlike mattress has the looks to impress and comfort that excels!

MaxCoil, with more than 20 years of experience and an established brand in Singapore for all your bedding and home furnishing needs, is proud to introduce the Otena 14" individual pocketed spring mattress.

OXYGEN PLUS THERAPY

This mattress features the Oxygen Plus knitted fabric – delivering invigorating oxygen therapy to relieve fatigue and uplift your mood, while offering exceptional breathability for a revitalising night's rest.

BETTER MOTION ISOLATION

With individual pocketed springs, MaxCoil's Otena mattress not only provides optimal targeted support for the body but also reduces and isolates motion to ensure undisturbed rest. It is especially recommended for light sleepers.

ENHANCED AIR CIRCULATION

In Singapore's hot and humid climate, this mattress helps sleepers enjoy cooler temperatures as they sleep, thanks to the use of natural

latex, which has an open-cell structure to allow the natural flow of air, and pinholes to decrease heat accumulation.

LUXURIOUS PADDED SUPPORT

Experience optimal pressure relief with the Euro pillow top padding in MaxCoil's Otena mattress. This luxurious addition ensures that you wake up free from neck and back pains by providing exceptional sleep support all night long.



Scan here to find out more

Pillow talk

Expert advice for choosing the right pillow for the best night's sleep.

TEXT Melanie Wong

To check out the full range of pillows available, scan here



Don't take your pillows for granted. They provide cushioning and support for your head, neck, shoulders and upper back while you're resting; help to align your spine so that you maintain a healthy posture; and reduce strain on your muscles.

But not all pillows are created equal. Some are firmer and taller than others, some are filled with down while others are constructed from latex and foam, and some are designed for allergy sufferers or side sleepers.

So, when you're shopping for the perfect comfy pillow that gives you the support that you need all through the night, what are some features to keep in mind? Gain City expert Ronald Lim, Director of Furniture/Bedding/DIY, breaks it down for us.

Pillows are stuffed with various materials like memory foam, latex, down, and so on. Can you describe how these fillings differ from one another?

Memory foam pillows have gained popularity in recent years due to their ability to mould to the contours of your head and neck, and thereby providing personalised support. The viscoelastic material conforms to your upper body, relieving pressure points and promoting proper spinal alignment. This type of pillow is especially beneficial for people who suffer from neck and back pain.

Down pillows are known for their luxurious feel and exceptional softness. Filled with the fluffy undercoating of waterfowl feathers, these pillows can make you feel like you're resting your head on a cloud. While luxurious, however, they may not be the best choice for people who suffer from allergies as the down can harbour dust mites and allergens.



Latex pillows are crafted from natural or synthetic latex materials. They offer a balance between support and comfort, with a resilient feel that provides consistent support through the night. Latex pillows are highly durable and resistant to dust mites and allergens, making them a suitable option for allergy-prone individuals.

Is height important when choosing a pillow? How do you know if you need a higher pillow?

The height of your pillow is important in maintaining proper spinal alignment while you sleep. Your preferred pillow height depends on factors such as your sleeping position, body type, mattress firmness and pillow firmness. Ideally, your pillow should be high enough to ensure that your head is aligned with your spine, so as to prevent neck and back pain.

What type of pillow do you recommend for people who suffer from stiff neck?

We recommend a memory foam/latex pillow that is contoured. This will give you pain relief as well as neck support.

What type of pillow is best for someone who has chronic back pain?

A memory foam pillow is good for back pain, because it offers firmness and support. The kind of mattress you sleep on is also important as it has to give your body the right support.



There are many pillows for allergy sufferers on the market. What are these made from and how exactly do they help allergy sufferers?

These pillows have materials with specific features, such as “ultra-fresh technology”, for example, which help prevent dust mites from growing in the various unfinished materials as compared to the exact same untreated articles.

Can you recommend the best pillows for different sleeping positions?

For side and front sleepers, we recommend down, fibre or gel pillows. These have a lofty feel and come in various levels of firmness. They support your upper body and align with your body comfortably.

Back sleepers may benefit from “down alternative” pillows. These, too, are available in various levels of firmness. This type of pillow is designed to relieve pressure in your head, neck and shoulders, and supports the natural curvature of your spine.



USA 1898

Singapore's No 1
Luxury Sleep System

comfortable beds loved
around the world



North America



South America



Europe



Asia



Africa



Australia

Crafted for optimal comfort and support

Quality and undisturbed
sleep from a mattress that
is the epitome of luxury
and relaxation.



The Regency Mattress from the King Koil Hotel Collection is meticulously crafted to provide an unparalleled sleeping experience akin to that at a five-star hotel suite. Designed with a blend of cutting-edge technology and superior materials, this mattress is designed to cater to the most discerning sleepers seeking optimal comfort and support.

As the only brand endorsed by the International Chiropractic

Association (ICA), our signature 5-zone individual pocketed springs offer optimal lumbar support and minimise motion transfer to ensure that you enjoy quality and undisturbed sleep. Our Excellent Edge™ Foam Encasement also provides a firm seating edge and ensures you maximise the sleeping surface.

The Regency Mattress is filled with luxurious comfort layers of

Made in Korea Micro-Gel® and 100% Natural Latex. It's upholstered with the finest European designed mattress cover that is treated with Ultrafresh®, to inhibit the growth of dust mite, bacteria, mould and mildew. This ensures that the mattress cover remains hygienic for its entire lifespan.

That's why we are the preferred brand of global hoteliers, service residences, and educational institutions.

All our mattresses are made to order in Singapore just before delivery.



Scan here to find
out more

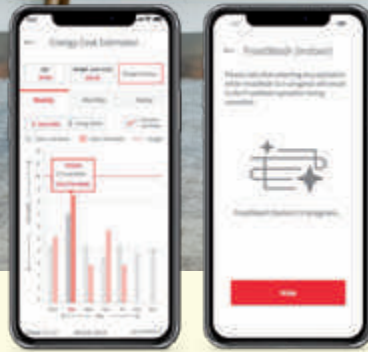
HITACHI

Energy-saving comfort

Cool your home while reducing energy consumption.



Cooling & Heating



TIPS TO BOOST ENERGY SAVINGS

Increasing or decreasing the temperature, making sure your air-con is properly installed, maintaining the appliance regularly (cleaning or replacing the filters and checking for leaks and damage, for example), shading your windows, and optimising your furniture layout can all go a long way towards reducing energy waste.

You can also programme your air-con to use less energy by way of the controls and timers.

MAKE USE OF ENERGY-SAVING FEATURES

The airCloud Go is our next generation of IoT-centric apps that provides convenient climate control and lets you manage and monitor your air-con via your smartphone, thus lowering energy consumption. The energy cost estimator, which lets you track your energy usage history, is a

smart management budget tool. With airCloud Go, you can activate Hitachi FrostWash® self-cleaning function remotely, which helps preserve indoor air quality while you're away.

Through these innovative features, the Hitachi residential air-con range aims to provide energy-efficient solutions that help reduce your



household's environmental impact while saving on energy costs.

*Both energy cost estimator and FrostWash® function only applicable in airCloud Go for multi-split model.

High utility bills, an air-conditioning system that runs longer than usual, and inconsistent temperatures are just some of the signs that your air-con is wasting energy. These problems may be due to several factors, from clogged air filters to poor indoor air quality.

Fortunately, there are ways to help your air-con run more efficiently.

Find out more at <https://www.hitachiaircon.com/sg/>



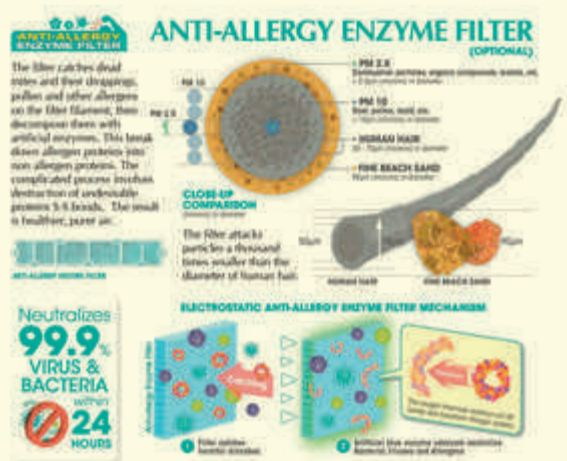
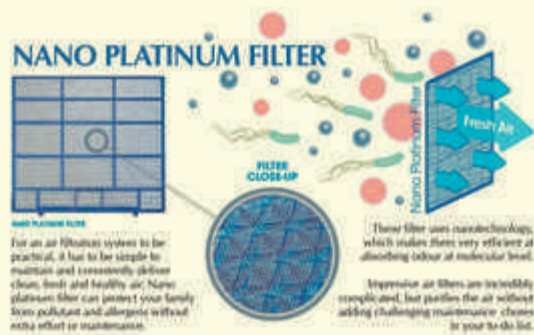
Scan here to find out more

A breath of fresh air

New air-purifying filters that improve the air quality in your home.



Indoor air can contain pollutants and allergens that may negatively impact our health, causing respiratory problems, lethargy and other issues. In fact, it is estimated that the pollutant level in our homes can be two to five times higher than that of outdoors. Seeing as we spend most of our time at home, indoor air quality should be a concern for everyone.



REDUCE POLLUTANTS, ALLERGENS AND ODOURS

Mitsubishi Electric Starmex features a range of filters to help improve the air quality in your home.

Our standard Nano Platinum filter utilises nanotechnology, which absorbs odour, pollutants and allergens. Compared to conventional filters, it also collects dust from the air more effectively.

All wall-mounted indoor units feature a Microparticle Catching filter, which helps maintain clean air by eliminating PM2.5 particles. This is especially useful when it's hazy outside.

You may opt to replace the Microparticle Catching filter with the Anti-Allergy Enzyme filter. It catches dead mites and their droppings, pollen and other allergens on the filter filament and decomposes them with artificial enzymes. The result is healthier and purer air.

THE PLASMA QUAD CONNECT

Mitsubishi Electric's new advanced Plasma Quad Connect is an optional accessory that utilises electric discharge to catch and neutralise microscopically small particles, bacteria, allergens, mould and viruses (including SARS-CoV-2, the virus that causes COVID). This improves air quality indoors and ensures a cleaner living environment.



Plasma Quad Connect



Scan here to find out more

COOL STUFF

Selling high

First impressions matter when it comes to putting your home on the market.

7

Air-con myths, debunked

Photos: iStock

Our expert sets the record straight on the most common misconceptions.

TEXT Leslie Ong

With all the information out there about air-conditioners, it can be hard to differentiate fact from fallacy. For instance, is it really necessary to service your air-con unit annually, and if your home is pristine, can you do away with cleaning your air-con filter regularly?

Unfortunately, there are many misconceptions out there that might be costing you money and affecting the lifespan of your air-con unit. Tan Kin Sek, Senior Operations Manager at Gain City Engineering, sheds light on the most common ones.

Myth

1

Switching to a bigger, more powerful air-con unit provides better results.

Fact: "Air-con units are designed to work at a specific rate. A large air-con unit will therefore cool your home a lot faster than a small one, but bear in mind that it may also lead to greater power consumption and thus, more expensive power bills," Kin Sek points out.

If you find that your current air-conditioner isn't cooling your rooms sufficiently or fast enough, and there's nothing wrong with it, then you may wish to upgrade to a bigger unit – but it's best to ask an expert to recommend a suitable size. The right-sized unit will do the job for the space that you have, without consuming more energy than it needs to.

Myth

2

Skipping air-con servicing and maintenance will not make a difference to the lifespan of the air-conditioner.

Fact: Neglecting to service your air-con unit will lead to a steady decline in its cooling performance, impacting its effectiveness and efficiency and causing it to consume more energy in the long run, according to Kin Sek.

Air-con experts recommend a thorough servicing (or chemical wash) at least once every 12 months, while servicing or maintenance should be done on a quarterly basis. Some problems associated with not servicing and maintaining the unit regularly include the accumulation of dust on the air filters (this can clog the filters and worsen the air quality in your home), loss of cooling function, water leakage and a reduced lifespan.

“Dust that’s floating in the air inevitably returns to the air-con unit and makes its way through the filter.”

Myth

3

If I vacuum my home every day, I don't have to clean my air-con filter regularly.

Fact: No matter how proficient you think your housekeeping skills are, it's still important to clean your air-con filter regularly, simply because dust is everywhere.

"Dust that's floating in the air inevitably returns to the air-con unit and makes its way through the filter," says Kin Sek.

A dust-covered air filter can cause a host of problems: It may result in lower airflow at the indoor unit, forcing the latter to work harder than it needs to, and prevent the unit from cooling the room to your desired temperature. Additionally, as it builds up, the dust may collect moisture, causing mould to develop on the filter. Mould is known for triggering skin and respiratory allergies, and it can make your family sick.

Filters are designed to keep out dust and allergens, so it only makes sense to clean them regularly.



Myth
4

All air-conditioners cost the same to run.

Fact: Kin Sek says that inverter air-conditioners are actually a little cheaper to operate. Generally, these save up to 30% of electricity compared to non-inverter models because they are designed to be more energy efficient.

“However, when it comes to maintaining your air-con unit, though, I’d say that the cost is about the same across all the different brands,” he adds.



Let the professionals help

Gain City provides air-con servicing for both residential and commercial premises at reasonable rates. Call us at 6222 1212 for a quote today!



Scan here to find out more

Myth
5

There’s no point replacing an old air-con unit until it breaks down.

Fact: Replacing the old unit with one of the newer, more technologically advanced models may save you money and actually be better for your health, so why wait for the old air-con to break down before enjoying these benefits?

“Look for systems with new technology – inverters use less electricity, for example, while models with ionisers provide cleaner air,” Kin Sek explains.

If you are confused by how some of the newer designs work or aren’t sure which model suits your home, Kin Sek suggests getting professional advice.

Myth
6

Fancy features, such as a human presence sensor, automatic de-icing and so on, are just sales gimmicks.

Fact: Each feature or function has a purpose and meets a specific market demand, says Kin Sek. If you’re not sure which ones meet your family’s needs, you should ask an expert for advice.

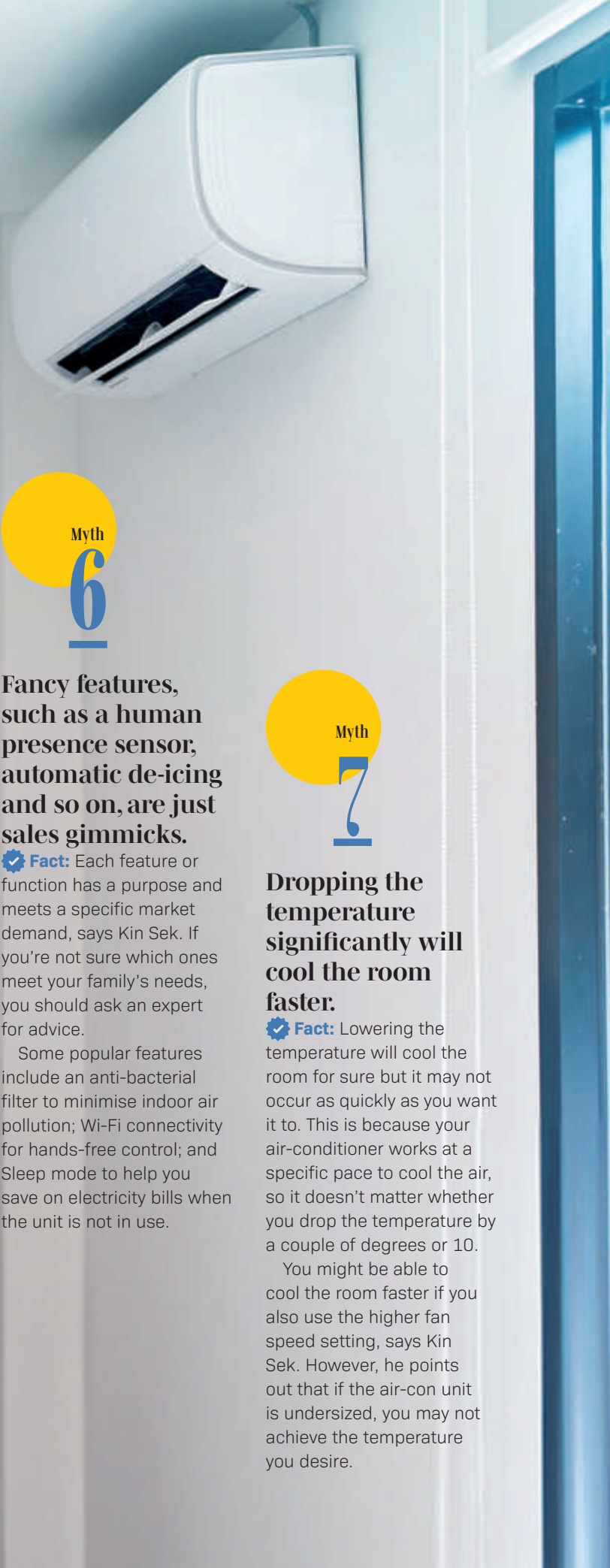
Some popular features include an anti-bacterial filter to minimise indoor air pollution; Wi-Fi connectivity for hands-free control; and Sleep mode to help you save on electricity bills when the unit is not in use.

Myth
7

Dropping the temperature significantly will cool the room faster.

Fact: Lowering the temperature will cool the room for sure but it may not occur as quickly as you want it to. This is because your air-conditioner works at a specific pace to cool the air, so it doesn’t matter whether you drop the temperature by a couple of degrees or 10.

You might be able to cool the room faster if you also use the higher fan speed setting, says Kin Sek. However, he points out that if the air-con unit is undersized, you may not achieve the temperature you desire.



KEEN TO SAVE ENERGY AND UTILITY COSTS?

© Armacell, 2024.



WE CAN HELP.

Properly installed insulation helps you avoid condensation and achieve energy efficiency. Choosing the right insulation matters for your aircon. Discover more at armacell.com.sg.



PERFORMANCE BEYOND BETTER

 **armacell**[®]
MAKING A DIFFERENCE AROUND THE WORLD

Insulate right with Armacell

Insulation can help you achieve energy efficiency and contribute to sustainability.



Air-conditioning accounts for up to 25% of the average Singapore household's electricity consumption, and with the recent increases in GST, we would all appreciate some money-saving tips. Also, household and building use of air-conditioning is the second highest source of Singapore's carbon emissions after the industrial sector. What can we do to reduce carbon emissions and support Singapore's goal of net-zero emissions by 2050?

Installing the right insulation with Armacell's suite of products on your air-con system can help you save energy and the planet! This is because the right insulation can help you avoid condensation and prevent unwanted energy losses, thereby achieving better energy efficiency. Furthermore, insulation is known



to be one of the most cost-effective means of reducing carbon emissions, and this all contributes towards sustainability.

Ensure that all your air-con pipes are well-insulated with ArmaFlex[®] Class 0 and sealed with Armacell's specially formulated ArmaFlex 520 adhesive. You will smile too when you know that you are saving energy, avoiding condensation issues, and contributing to the sustainability cause.

Visit armacell.com.sg or your nearest Gain City Showroom to discover more.

ArmaFlex[®] is a trademark of the Armacell Group and is registered in the US and other countries.



Scan here to find out more



Keep your cool

Look no further than LG's next-generation air-conditioner for energy-efficiency and ease of installation.

No matter how often you use your air-conditioner, you'll want to make sure that it's energy-efficient and economical enough to run. This is where the LG R32 Multi Split Inverter Outdoor Unit comes in. The compact 5-Tick energy-efficient LG R32 refrigerant conveys heat efficiently and offers a higher cooling capacity, while being kinder on the environment.

ADVANTAGES OF R32 REFRIGERANT

Compared to R410A refrigerant, R32 refrigerant has many advantages, such as having a lower global warming potential. It also uses less gas and performs more efficiently.

RELIABLE AND ENERGY-EFFICIENT

LG Multi Inverters are equipped with a BLDC compressor that uses a strong neodymium magnet. This technology affords more savings over the product's lifetime.

The addition of a pressure sensor* also means that it takes less time to reach the desired temperature with a high level of accuracy and stability. This translates to greater reliability during operation.

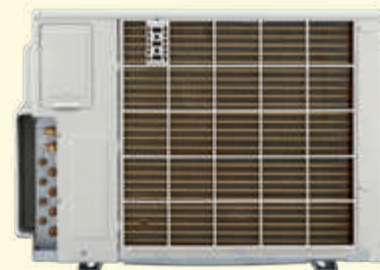
*Only applicable to 28,000 BTU Multi Split Inverter Outdoor Unit.



QUIET, EASY TO INSTALL AND MAINTAIN

Set the dip switch on the PCB of the outdoor unit to reduce noise levels during night operation.

The inverter also boasts the new light and compact Multi Piping Type, making it easy to carry and install, and LG's Gold Fin, an anti-corrosion coating on the surface of the heat exchanger, which ensures that the surface is more resistant to corrosion.



Scan here to find out more



Turn on your greener* world

*Compare between air conditioner using R32 and air conditioner using R410

Easy ways to add value to your home



Tips to make it more marketable without spending a lot on renovations.

TEXT Leslie Ong



Are you thinking about selling your home? With property prices hitting new highs recently, it's logical to want to market your home at the highest price possible. But can you enhance its value without spending a lot of money on renovations?

Yes, says Jack Sheo, Senior Associate Division Director with PropNex Realty.

While there is no one look or style that's guaranteed to clinch the sale for you, there are definitely things you can do to make your home more aesthetically pleasing and appear more valuable to potential buyers.

Here, Jack tells us what most people who are shopping for a new home like to see, and shares some easy and inexpensive ideas for giving your residence a fresh new look and feel.

Know what sells

According to Jack, there are a few main features of a home that can help raise its value. These include: ample storage space (proportionate to the size of the home); natural light; good ventilation; updated electrical system; plumbing and home network connectivity; upgraded bathrooms; and an upgraded kitchen.

Which of these does your property already have, and which ones does it lack? Since these are a home's main selling points, it's worth spending money to ensure

that you can check off those boxes before listing your home for sale.

But, keep in mind that you needn't spend a lot – making your home feel light and airy may be as easy as replacing your dark curtains with light, sheer ones, while creating extra storage can be done by adding a vanity unit under the bathroom sink or installing a few shelves on exposed walls, for example.

First impressions matter

When a potential buyer walks through your property, you want them to feel relaxed, like they've come home. To this end, Jack says that first impressions make a difference. It's not just about making your place look good; you should also find ways to make potential buyers feel at ease.

"The first tip I can give is to declutter as much as possible," Jack explains.

"Applying a fresh coat of paint on the walls also helps to refresh the space."

And don't forget to make sure that your home is sparkling clean. Jack says that the kitchen and bathrooms must be especially spotless. He also advises you to clean the grouting (the lines between tiles and joints). If it's impossible to clean, he suggests replacing the grouting completely.

If your home has any lingering unpleasant smells, do what you can to get rid of them because these can put potential buyers off and lower the value of your home.

On the day of the viewing, you can improve how your home smells by turning on the air-conditioner, filing it with fresh flowers, brewing coffee or baking cookies, or using an aromatherapy diffuser, Jack adds.

Get organised

Clutter not only takes up precious space, it is also visually distracting. Jack says it's worth making the effort to organise your belongings, to create a sense of calm and spaciousness, as well as highlight the functionality of the various areas within your home.

Start getting your place tidy and organised by getting rid of what you no longer need and investing in smart storage solutions for items you want to keep – this will keep them out of view on the day of the walk-through. Everything in your home should have a place.

Paint perfection

A new coat of paint will help cover unsightly scratches, marks and cracks, and make your walls and ceilings look a lot cleaner.

"Stick to light, neutral colours like beige, grey and white to create a spacious and airy feel – these colours also appeal to a wider audience," Jack advises.

He recommends avoiding bold, trendy or personalised colour choices as these may not be to everyone's taste.

Nippon Paint offers a wide range of neutral colours for your home's interior. Best of all, the company has a professional painting service using premium, environmentally friendly Nippon Paint Odourless All-in-One paints.

All work is done by certified and trained painting professionals.



Go natural with lighting

"Lighting enhances a home's value by contributing to its overall aesthetics, functionality and energy efficiency," says Jack.

If you need more reasons to maximise the amount of natural light in your home, here are three:

- For starters, an environment filled with natural light is usually bright and airy, creating an atmosphere of openness and comfort.
- Natural light can accentuate your home's architectural features, highlighting its design and craftsmanship.

- Abundant natural light is associated with a number of health benefits, such as improved sleep and an increase in vitamin D production – so, when a potential buyer sees that you have lots of natural light in your home, the perception will be that your home is a healthy one, too.

If your home doesn't get much natural light, there are a few ways to "fake it". These include using mirrors to help reflect any light that comes in, avoiding dark-toned décor and dark walls, using bulbs that simulate sunlight, and including table or floor lamps for additional light.

Colour refresh

Update your home with a professional paint job.



Painting is one of the easiest ways to upgrade and add value to your home, but if you're not up to the task of doing it yourself, try Nippon Paint's professional painting service.



PAINTING PACKAGES TO SUIT YOUR NEEDS

All work is done by certified and trained professionals. Whether you live in a flat, condo or landed property, you can select from several packages:

Interior painting:

There are five packages – Value, Classic, Odourless, Top and Ultra Premium – to choose from, depending on paint type and unit size. All packages use premium interior paints that are environmentally friendly and possess low to almost no odour.

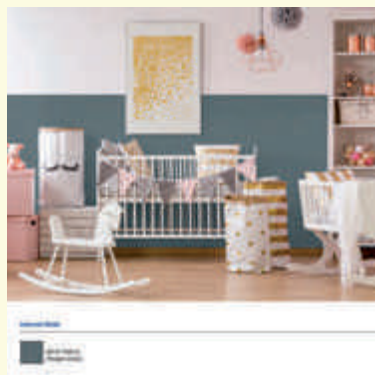
Exterior painting:

Guard your terrace house, semi-detached home or bungalow against algae with special protective paint.

Ultra-Premium Package:

This anti-viral package includes the use of VirusGuard to protect against bacteria and viruses that linger on walls.

These packages include perks such as a free pre-painting site inspection and a free Digital Colour Preview Service.



FOUR STEPS TO A FRESH NEW HOME

Once you select a package, a project manager will take you through four stages:

- 1 Pre-painting site inspection:**
Assessing the state of your walls can help prevent problems like peeling paint down the road.
- 2 Pre-painting preparation:**
Protection of your furniture and floors.
- 3 Painting:**
The project manager will work closely with the painters to ensure they're on track.
- 4 Completion and post-painting:**
Assess the job when it's done and let the project manager know if you need any touch-ups. Homeowners receive a one-year product warranty.



Scan here to find out more

Visit www.nipponpaint.com.sg for more details.

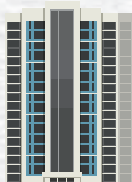


Professional PAINTING SERVICE



HDB & CONDOMINIUM PAINTING SERVICES

LANDED PROPERTY VIEW TO QUOTE



HDB

CONDO

Studio/ 2-Rm Flat	<490 sqft
3-Rm Flat	491-700 sqft
4-Rm Flat	701-1000 sqft
5-Rm Flat	1001-1200 sqft
5-Rm Exec	1201-1400 sqft
Executive Maisonette	1401-1600 sqft



VALUE PACKAGE

Nippon Paint Vinilex 5000
Inclusive of only 1 wall colour and Matex white for ceiling only

USUAL	NOW
\$1,400	\$950
\$1,650	\$1,200
\$1,900	\$1,450
\$2,100	\$1,650
\$2,200	\$1,850
from \$2,400	from \$2,000



CLASSIC PACKAGE

Nippon Paint EasyWash

USUAL	NOW
\$1,500	\$1,150
\$1,750	\$1,400
\$2,000	\$1,650
\$2,200	\$1,850
\$2,300	\$2,050
from \$2,500	from \$2,200



ODOUR-LESS / 3-IN-1 MEDIFRESH PACKAGE

Nippon Paint Odour-less All-in-1, 3-in-1 Medifresh

USUAL	NOW
\$1,650	\$1,300
\$1,900	\$1,550
\$2,150	\$1,800
\$2,350	\$2,000
\$2,450	\$2,200
from \$2,650	from \$2,350



TOP PACKAGE

Nippon Paint Odour-less EasyWash, Odour-less Medifresh, MozzieGuard

USUAL	NOW
\$1,800	\$1,450
\$2,050	\$1,700
\$2,300	\$1,950
\$2,500	\$2,150
\$2,600	\$2,350
from \$2,800	from \$2,500

THE TRUSTED PAINTING SERVICE BY PROFESSIONALS

CALL US AT

6319 7222

OR WHATSAPP / SMS US AT

9369 7222



FREE
Colour Preview Service*
worth **\$150**



FREE
Upgrade to Anti-Mould Ceiling White for whole house ceiling*
worth more than **\$380**



FREE
Wall Care Inspection
worth **\$150**



FREE
12 Months Warranty*

*Terms and conditions apply. Prices quoted are valid until 29 February 2024. Nippon Paint Singapore reserves the right to amend the prices without prior notice.



EFFORTLESS COOKING: CHEF MODE & DEHYDRATION MODE

Up to 15 dishes is exclusive to De Dietrich,
Fully automatic cooking with utmost precision.

Elevate your culinary creations with dehydration mode.
Dehydrate herbs, fruits, and vegetables flawlessly at a precise 60-80°C.

De Dietrich 
www.asia.de-dietrich.com

One oven for all your cooking needs

Unparalleled functionalities for fuss-free cooking.

Cooking is now a breeze with Chef mode, a programme available on De Dietrich ovens. Based on the latest technologies, this programme allows you to prepare 6 to 17 of the most cooked dishes in automatic mode. All you need to do is simply select the dish, place the dish on the recommended rack, and your De Dietrich oven will automatically cook for you. It does so by automatically adjusting the temperature and cooking time, while constantly monitoring and analysing the moisture level



of your food through a sensor. Apart from automatic cooking, De Dietrich ovens also come with a Dehydration mode, a feature modern homemakers will find tough to live without. Dehydration mode permits a variety of items such as herbs, fruit and vegetables to be dried at a precise temperature between 60°C and 80°C. By dehydrating at these temperatures, bacteria will not multiply, making it possible to preserve minerals and vitamins for longer periods of time.



Scan here to find
out more

HOMEINSIDER

Bold new flavours

Pilot Kitchen's 20something chefs are not afraid to break culinary boundaries.





Cooking up a magical Mother's Day meal

Nothing says love for your family more than heartwarming home-cooked dishes.

TEXT
Sean Yee

Mothers, like anyone else, have idiosyncrasies. Some nag excessively, some express their love overbearingly and some overprotect unnecessarily. But they share one universal truth that is unique to motherhood – they will go to the ends of the earth to keep you safe.

And they don't expect much in return! It could be the simplest gesture of love, like spending time with them, or a home-cooked meal that would easily make their day. For this upcoming Mother's Day, show them how much you love them with food that is cooked from the heart.

To help you get started, Jeffrey Chua, Head Chef of Happy Cafe and Lucky Cuisine, introduces two recipes that are inspired by his own gratitude and affection for his mother.

Was your mum supportive of your culinary pursuits, especially as a career?

The very day I decided to be a chef, my mother has always been there to support me. She was only concerned if the job could bring me the happiness that I was looking for. The first day of work was especially gruelling – 50kg of mixed vegetables were placed before me to be washed and cut by the end of the shift. My hands were pruned, stained and quivering when I got back home.

My mum took my hands and told me, "If you find it too much, you can find another job. I believe in you, Ah Boy, if you think you can do it, I think you can do it too." My parents were not from wealthy backgrounds. They knew the hardship that comes with life. But my mother's compassion and love, despite her rough upbringing, are just so refreshing.

Thank you, Mummy, for taking care of me and supporting my decisions no matter what!

Tell me more about the dishes you will be presenting to our readers.

I want to pay homage to my mother's love of the rich and smoky flavours that are so distinctly zi char. At Lucky Cuisine, Singapore Mama's Buttermilk Chicken elevates conventional fried chicken with a spicy and creamy buttermilk sauce. The earthiness and fragrance of curry leaves uplift the heaviness of the sauce with their citrusy accents. I also want the dish to embrace

Mother's
DAY
SPECIAL



Singapore Mama's Buttermilk Chicken

(Lucky Cuisine)

local flavours, which is why I incorporate Maggi Seasoning into the chicken's marinade.

Ratatouille, which we are serving at Happy Cafe, is an unorthodox stewed dish in our local food scene, but I love just how vibrant and beautiful it is, with its medley of bright-coloured vegetables that forms an amazing culinary profile. What I think most mothers will appreciate about the dish is the focused use of fresh ingredients! Ratatouille celebrates the earthy richness of organic produce, like bell peppers, zucchini and eggplants, which is a nice contrast to the heaviness of zi char. For mothers who prefer a healthier and lighter alternative to the Buttermilk Chicken recipe, the Ratatouille will give you bang for your buck, and then more!

Ingredients:

500g Chicken Breast, sliced

MARINADE

1 tablespoon Curry Powder
1 teaspoon Maggi Seasoning Sauce
1 Egg
2 tablespoons Oil

THE BATTER

½ cup Corn Flour
½ cup Rice Flour

BUTTERMILK SAUCE

40g Salted Butter
3 cloves Garlic (minced)
3 sprigs Curry Leaves
2 Red Chili Padi
1½ cups Evaporated Milk
2 tablespoons Condensed Milk
2 tablespoons Water (optional)

Preparation:

- 1 Marinate the chicken with curry powder, Maggi seasoning sauce, white pepper, and salt. Mix in a raw egg and 2 tablespoons oil.
- 2 Coat the chicken in the batter and deep fry until they achieve a golden brown colour. Set aside.
- 3 In a wok set over medium-high heat, add in salted butter, garlic, and chilli padi. Cook for 1 minute. Remove the curry leaves from their stalks and add them to the pan. Season with salt and pepper.
- 4 Pour in evaporated and condensed milk. Let the sauce simmer for 1 minute. (Optionally, add in two tablespoons of water for a less thickened sauce.)
- 5 Mix the fried chicken slices with the mixture and serve.



Ratatouille

(Happy Cafe)

Ingredients:

- 1 Large Eggplant, diced
- 2 Zucchini, diced
- 3 Bell Peppers (red, yellow, and green), diced
- 5 Ripened Tomatoes, diced
- 5 cloves Garlic, minced
- 1 tablespoon Tomato Paste

Preparation:

- 1 Heat up cooking oil in a large non-stick pan over medium heat.
- 2 Add in the diced eggplant. Stir regularly until it starts to brown. Season with salt. Transfer to a plate and set aside.
- 3 Add oil to the pan. Toss in the zucchini. Stir frequently until it crisps. Season with salt. Transfer to a separate plate and set aside.

- 4 Once again, top up the heated pan with cooking oil. Stir in bell peppers and cook for 5 minutes. Then mix in minced garlic and continue cooking for 3 minutes.
- 5 Incorporate the mix with ripened tomatoes and a tablespoon of tomato paste. Stir until the tomatoes have broken down into a sauce. Add the cooked eggplant and bring the stew to a gentle simmer until the eggplant is softened.
- 6 Add the cooked zucchini and let it simmer for an additional 1 to 2 minutes.
- 7 Season with sugar, salt and, optionally, a drizzle of olive oil.

Happy Cafe and Lucky Cuisine have prepared a lovingly curated menu this Mother's Day. In addition to Singapore Mama's Buttermilk Chicken, customers can also expect zi char classics like Braised Eggplant with Fermented Black Bean Garlic Sauce and Homemade Rock Sugar Chrysanthemum Tea!

Happy Cafe set meals, (which come with Soup, Main Course and Drink) are at a reasonably priced \$16.80 per head.

Lucky Cuisine set meals (which come with Main Course, Dessert and Drink) offer great value for money at \$12.80 per head.

For more information or to make a reservation, message 65+ 9873 4792.

Lucky Cuisine and Happy Cafe are located in Gain City Megastore@Sungei Kadut, 71 Sungei Kadut Drive, Singapore 729577.

-FUJIOH-

HOOD/
FR-CL1890



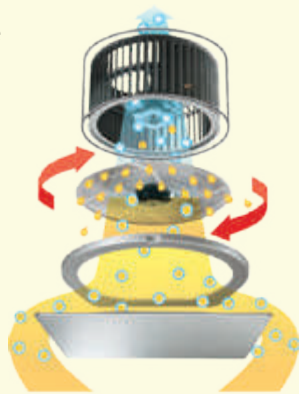
Your solution for an oil-free kitchen



The cooker hood specialist

Make life simpler and more comfortable with this cooker hood.

With 30 years of experience in Singapore and the Asian market, leading cooker hood manufacturer FUJIOH strives to make your life simpler and more comfortable with their innovative technologies. Their range of cooker hoods are the most used in Japanese homes, specially designed with Asian cooking in mind.



UNIQUE, PATENTED TECHNOLOGY

Notably, their patented Oil Smasher technology, exclusively available in the chimney hood FR-CL1890, captures oil from cooking fumes with a high-speed spinning disk (filter) and minimises oil entering the inner hood, giving you an oil-free kitchen and clean inner hood at the same time.

EASY TO CLEAN

Special coatings such as hydrophilic coating on the filter and oil repellent paint on the exterior surface make the whole hood easier to clean too.

ONE-STOP SHOP

As a one-stop shop, FUJIOH also carries a wide range of gas hobs, induction hobs, built-in ovens and other home appliances.



Scan here to find out more

Discover more at www.fujioh.com/sg



Photo: Clement Lim

House of the Dragon

The Year of the Dragon is all about enhancing good fortune and abundance in all aspects of your life. Here's how you can bring these positive energies into your home, using basic feng shui principles.

TEXT Andrew Y

The Year of the Dragon is an auspicious milestone on the Chinese zodiac, and one that is said to bring prosperity and good fortune.

Homeowners, too, can benefit from the promise and optimism of the Year of the Dragon. To find out how to create a calmer, happier

dwelling and make use of the positive energies and power that the Wood Dragon symbolises, we spoke to geomancer Clement Lim from Kang Li Feng Shui.

Clement works with, and was trained by, his father, Master Lim (above, right). The older Lim established his feng shui consultancy in

1989 and took his son under his wing when the latter began showing an interest in feng shui while in secondary school.

Since then, the pair has worked closely together, using the art of feng shui to help their residential and commercial clients create inviting, harmonious and

prosperous spaces, and to guide individuals to be more balanced and successful in their personal lives.

Clement describes what makes the Year of the Dragon so special and shares his expert advice for bringing the power, strength and luck of the mythical creature into your home.



What does the Dragon represent in feng shui, and what is the Wood Dragon expected to bring us in 2024?

The Year of the Dragon symbolises power, strength, protection and transformation. This being 2024, we have just entered Period 9 of the feng shui cycle, which means that we are about to see a shift in the dominant energy that influences our spaces. Changes in feng shui energy can bring forth new opportunities or challenges.

How can homeowners use feng shui principles to benefit from the Dragon's auspiciousness?

In 2024, it is advisable to make some adjustments to homes and workplaces to create alignment with the expected changing energy patterns. The two sectors to enhance wealth energy are the North East sector and the North sector. A compass can be used to determine where these sectors are in your home or workplace.

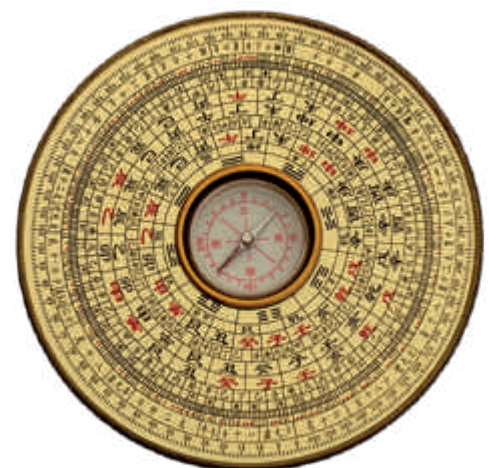
It is important to keep these sectors clean, tidy and organised. You may also wish to enhance these sectors with specific colours, elements (like water, wood or metal, for instance) or symbolic objects, or by rearranging your furniture to optimise the flow of energy (Chi) moving through these areas.

Is there anything homeowners should avoid doing to their home in the Year of the Dragon?

In feng shui, certain stars and energies are considered particularly influential and potentially impactful during specific years. For example, **Tai Sui**, also known as the Grand Duke Jupiter, sits in the South East direction. It's considered inauspicious to directly confront or disturb the Tai Sui direction. In 2024, homeowners might want to avoid major renovations, loud activities, or disruptive construction in this sector to prevent potential negative effects.

Sui Po, or the Year Breaker, is another energy to be mindful of in feng shui. It's advisable not to disturb the Sui Po direction as it could bring about potential disruptions if disturbed, so homeowners may want to avoid renovations, digging or significant changes in this area.

The **Five Yellow Star** (Wu Huang) is an annual affliction in feng shui associated with misfortune and obstacles. So it's recommended to suppress or counteract the negative effects of this star. In 2024, if the Five Yellow Star sits in the West sector, it is advised to use remedies like metal elements (such as five element pagoda and he tu plate) to mitigate its negative influence.





Sickness Star, or Illness Star, is another annual affliction that, as the name implies, can bring health-related challenges and health-impacting energy. Homeowners may want to pay attention to the South East sector in 2024 and consider remedies such as placing a medicine gourd in this area, and keeping the area well-lit and well-ventilated to promote better health and well-being (medicine gourds are believed to help remove the energy that brings about illness and bad luck).

It's a good idea to consult a feng shui expert to work out where the various sectors and directions are in your home.

What auspicious colours or elements can homeowners introduce into their homes?

Feng shui is a highly personalised practice, which is why it's important to consider the occupants' birth dates before giving any recommendations. An analysis of the Flying Stars, which looks at the positive and negative auras of a building, adds another layer of specificity to feng shui recommendations.

In order to create a balanced or auspicious living or work environment, I advise homeowners to consult a feng shui expert, who will look at both personal birth data and the Flying Stars analysis before offering more targeted and effective recommendations.



Photos: iStock

The dragon in Chinese culture is a symbol of power and strong energy. How can homeowners help to balance the energy in their homes during the Year of the Dragon, to keep their home calm, harmonious and stress-free?

Getting rid of clutter and organising one's home

are fundamental feng shui practices, so you may want to start there. A tidy and uncluttered home promotes the free flow of Chi and prevents stagnant or chaotic energy from accumulating. A tidy space also fosters a clearer mind and reduces stress for the occupants.

BDJ424VLB

Effortless Elegance, Sparkling Results



Brandt



Sparkling clean dishes, every time

High-performance built-in dishwasher for every cleaning need.

Say goodbye to your old dishwashing gloves and welcome Brandt's new BDJ424VLB built-in dishwasher!

This handy and trusty cleaning partner will tuck seamlessly into your kitchen, making sure that the theme, colour and outlook of your kitchen remains consistent throughout.

Perfect for those who refuse to compromise on cleanliness, the all-new BDJ424VLB built-in dishwasher tackles all dishwashing duties for you so that you can focus on what truly matters: spending time with your loved ones after a hearty meal.

From baked-on food to greasy pots

and grimy pans, this dishwasher is sure to transform all your cutlery, tableware, and cookware into sparkling showpieces.

With this dishwasher, stubborn stains will be effortlessly removed thanks to Brandt's Vortex technology, a wash feature that creates a concentrated and intensive cleaning zone. Also, here's a fun fact: dishwashers use less water than manual washing.

So, ditch the scrubbing sponge today and invest in convenience, water saving and sparkling satisfaction with Brandt's all-new BDJ424VLB built-in dishwasher!



Scan here to find out more



72

Hungry for culinary success

From left: Sebastian, Nikesh, Bryan and Harley prep for dinner service.

Pilot Kitchen's team of chefs are equipped with youthful ebullience, culinary finesse and a shared love for gastronomy.

TEXT
Sean Yee

PHOTOGRAPHY
Wei Liang
Wong



Bryan Wai, like most culinary initiates, started his journey empowered by a vigour stirred by ambition and a vision inspired by imagination. He knew he wanted a place of his own where his wildest ideas could roam free. This dream soon became a necessity when Bryan found himself in various fine dining establishments working day and night for a narrative that wasn't his. And he realised he wasn't alone in feeling this way.

Not one to take a back seat in his own story, Bryan, 25, now helms Pilot Kitchen alongside an equally driven squad of friends. Joined by Nikesh Nath (Kesh), 27, Harley Dai, 27, and Sebastian Kok, 25, he shares more about Pilot Kitchen as a platform for young chefs to lead the charge of their own culinary journeys.

He also shares a Pilot Kitchen Mother's Day special recipe for readers to surprise the family's matriarch with a sweet treat!

Tell us more about Pilot Kitchen.

Bryan: Staying true to our moniker, Pilot Kitchen alludes to the idea of a “pilot project”, a testing ground where my chefs are encouraged to break culinary boundaries, reinvent the conventional and transform the ordinary into something magical.



Tell us about the hurdles that you guys had to overcome to make Pilot Kitchen a reality.

Sebastian: Managing the expectations of not just our team of four, but our diners as well, can be a daunting responsibility. You never want to not live up to expectations, especially when we are placed in the spotlight.

Kesh: Yes! And all our palates are very different! I love acidic and strong flavours. Sebastian is a sucker for anything sweet. Harley prefers aromatics that are lighter and more nuanced. It is not easy finding a compromise that incorporates four distinct preferences that can also accommodate our diners.

Bryan: Even today, we are still perfecting our dishes, experimenting with new interpretations of our menu items and revising our process based on the feedback of our diners. I wouldn't call it a hurdle, but rather a continuous pursuit for excellence.

It is so interesting how you guys operate a non-hierarchical kitchen. How does that work?

Sebastian: I think it is our chemistry that sets us apart from other kitchen types. All of us know that this kitchen is bigger than each of us. And with that understanding, we are willing to compromise for each other to make this work.

Kesh: This is so important because each of us has very strong characters. We are all very jovial, playful, and animated. Sure, it may go overboard occasionally, but it is our idiosyncrasies that imbue our food with distinct personalities.



What are some of your favourite dishes from Pilot Kitchen?

Harley: I cannot stress how much I love our Peri Chicken. We retain the natural juices of the meat and contrast this tenderness with a thin layer of crispy chicken skin that uplifts the entire dish with a delicious crunch.

Kesh: Our Hamachi dish is really out of this world. I am a sucker for raw and cured fish, and any culinary allusions to Peruvian food is a sure winner for me.

Sebastian: The milk bun! Funny story – it all started with customers often asking for a carb side dish. We brainstormed and decided



to reach out to our own childhood favourites! I remember how old-school bakeries would serve this bread type that is so fluffy and cakey – think of the bread used for Singapore's iconic ice cream sandwiches – and wanted to recreate it. In fact, a lot of our ideas stem from personal nostalgia.



74

Tell us more about the Mother's Day recipe you are sharing today.

Bryan: We wanted a dish with both a narrative and taste that mothers can relate to. We tested this dish out last year and our diners loved it!

Some describe Pilot Kitchen as a “hidden gem”, a “gastronomic adventure” and a “base for young aspiring chefs.” In your own words, what is Pilot Kitchen?

Bryan: At its core, Pilot Kitchen is a comfortable home for a group of friends to do what they love the most. Really, how often do we get the chance to work alongside our friends? This is our home, which is the main thematic element that brings the place together. We built our fixtures from scratch, we adorn the place with our faves, and we create a menu that we can all be proud of.

Harley: Bryan said it best – Pilot Kitchen is an extension of all of us. Every plate that leaves our kitchen reflects our many personalities. And I hope we can continue to surprise our diners with our little quirks.

Sebastian: A blank canvas, a playground for us to express ourselves creatively.

Kesh: It is also our culinary passport, as a group of friends, to challenge one another to be our best.



Pilot Kitchen's Butter Cake

Ingredients:

400g All Purpose Flour
500g Butter
400g Sugar
56g Milk
12g Baking Powder
8g Salt
4 Eggs

Preparation:

1 Preheat your oven to 190°C.
2 Sieve flour and baking powder.
Add salt to the mixture.



- 3** With a stand mixer, add in butter and sugar and whisk until the mixture is pale yellow.
- 4** Add the eggs in succession. Fold in the flour mixture after.
- 5** Pour in milk and continue whisking until the mixture attains a cake-batter texture.
- 6** Transfer the batter into a greased pan, and bake for 40 to 50 minutes at 190°C.
- 7** Serve with your favourite ice cream.

Visit Pilot Kitchen at 2 Havelock Road, #B1-04, Singapore 059763.
Reservations at <https://pilot.kitchen> are a must.



Perfect for Every Occasion

Elevate your moments with Mia, PyroGlow™ (Touch), and GrillMaster™ — your companions for all occasions. Discover the magic they bring to each part of your day!

mia **NEW**



PYROGLOW
TOUCH



G R I L L M A S T E R ™



Follow Us



Kith By Casa



Kith.bycasa

A trio of culinary marvels



Revamp your daily routine with the perfect trifecta of culinary companions – Mia, PyroGlow™ (Touch), and GrillMaster™ – transforming ordinary moments into extraordinary experiences.

MORNING SERENITY WITH MIA

Start your day on a tranquil note as Mia brews the perfect morning elixir directly from bean to cup. Let

the aroma of freshly brewed coffee set the tone for a calm and focused beginning. This fully automatic coffee machine comes with robust brewing precision, ensuring precise tamping & maintaining an optimal water flow rate. Comes with 15 specially crafted beverage presets, including espresso, latte & more!



LUNCHTIME INNOVATION WITH PYROGLOW™ (TOUCH)

Infuse innovation into your midday break with PyroGlow™ (Touch). This 99.9% smokeless BBQ grill is equipped with rotating grill pan and uses touch gestures to make cooking simpler. Experiment with the 12 preset menus and 9 temperature settings.



EVENING GASTRONOMIC JOURNEY WITH GRILLMASTER™

Let GrillMaster™ transform your evenings into gastronomic journeys. Unleash your inner master chef with 10 cooking functions from grill, roast to even steam; cooking dinner has never been such a breeze.

Embrace the rhythm of your culinary routine, savouring the unique magic that Mia, PyroGlow™ (Touch), and GrillMaster™ bring to each moment. Turn your daily rituals into a celebration of taste, innovation, and sophistication. Savour the routine and cherish the moments!



Scan here to find out more

LG Objet Collection™



LG Objet Collection, Built for Performance

The new LG WashTower™ seamlessly combines a front-load washer and dryer into a single, vertically stacked unit to maximize space efficiency without compromising performance. Comes in a sophisticated nature green and nature beige color, the 14/10kg WashTower™ adds a touch of elegance to any laundry room while delivering outstanding performance.



Life's Good.

All-in-one laundry solution

Get clothes clean and dry with this smart LG WashTower™.

Make laundry day easier with the LG Objet Collection™ WashTower™. Aesthetically pleasing and with built-in intelligent features, it cleans and dries thoroughly for a fresh load every time.



14/10kg WashTower™ (WT1410NHEG)
21/16kg WashTower™ (WT2116NHEG)

STYLISH DESIGN

In colours like Nature Green and Nature Beige, the LG WashTower™ suits any home. Compact and sleek, the all-in-one washer and dryer has a space-saving, single stacked “tower” design with a Centre Control Panel.

It's also designed to produce less vibration and therefore less noise.

THAT'S SMART

The WashTower™ has several built-in intelligent features, like AI Direct

Drive™ and Smart Pairing™, which work in tandem to reduce laundry time while enhancing fabric protection; AI DD™ Technology handles the clothes with care; and Smart Pairing™ Technology automatically applies a suitable drying course based on previous wash cycles. Additionally, the dryer pre-heats to shorten the overall drying time.

A CLEANER LOAD

LG Allergy Care cycle removes 99.9% of live, allergy-causing dust mites from clothes while the TurboWash™ 360° technology cleans the clothes thoroughly in just 39 minutes.

Another useful feature is LG's quick wash and dry option for small loads.

The LG ThinQ™ app helps you stay connected to the WashTower™ from wherever you are.



14/10kg WashTower™ (WT1410NHB)



Scan here to find out more

LG SIGNATURE OLED M



World's First and Only Wireless OLED TV

LG OLED technology, refined over 10 years, meets a wireless design that offers you the freedom to place your TV anywhere. Unwind in a clutter-free space with only the power cable attached to the TV rather than additional wires and devices.

LG OLED TV has been ranked No.1 selling OLED TV Brand for 11 consecutive years by Omdia. World's first and only wireless OLED TV refers to OLED TV with 4K 120Hz wireless connectivity between Zero Connect Box and screen. Power cable connection to both the TV screen and Zero Connect Box required.



Zero Connect Box for wireless AV transmission



Life's Good.

Wireless wonder

Eliminate the clutter of traditional cables with this wireless OLED TV.

TV cables create a mess, plus they can make your space look unsightly. The LG SIGNATURE OLED M (Model: OLED97M3PSA) is designed to eliminate cable clutter and give you the freedom to place your TV wherever you want.



* Refers to OLED TV with 4K 120Hz wireless connectivity between Zero Connect Box and screen.

WIRELESS TECHNOLOGY

The SIGNATURE OLED M is the world's first and only wireless OLED TV*. With its groundbreaking Zero Connect Box, the wireless solution supports a range of connectivity options, including HDMI 2.1, USB, RF, LAN and Bluetooth. Designed for convenience, LG's wireless AV transmission solution was engineered to simplify cable management for users who connect their TVs



to various peripherals such as gaming consoles and set-top boxes.

BETTER VIEWING EXPERIENCE

Thanks to the $\alpha 9$ AI Processor 4K Gen6, you can enjoy improved picture and functionality,



Stand sold separately



while the LG OLED display and Brightness Booster Max deliver bright, bold visuals. Dolby Atmos[®] and Vision, VRR, NVIDIA G-sync, and AMD Freesync Premium compatibility allow for immersive entertainment.

NO-GAP DESIGN

The One Wall design ensures a flush fit when the TV is mounted against the wall (stand sold separately).

For more convenient viewing, the TV boasts smart functionality, including ThinQ[™] AI, webOS, and Hands-Free Voice Recognition.



Scan here to find out more

For your viewing pleasure

Enjoy excellent picture quality, epic gaming and more with this 4K TV.



Turn your living room into a home theatre with Philips 4K Ambilight TV, designed to take your viewing experience up a notch.

AMAZING PICTURE AND SOUND QUALITY

No matter what you watch, the 4K Ambilight TV (65PUT8808) delivers bright, ultra-sharp picture, crisp contrast, vivid colours and smooth motion, thanks to Philips P5 picture engine. The TV is also compatible with all major HDR (High Dynamic Range) formats, so you'll see more detail, even in dark and bright areas, when you're streaming HDR content.

With Dolby Vision and Dolby Atmos on board, films, shows and games look and sound incredible – hear every word clearly and experience sound effects like they are happening around you.

The Philips Wireless Home System powered by DTS Play-Fi means you'll enjoy excellent TV sound. It also lets you connect to compatible soundbars and wireless speakers around your



home, or create a home theatre surround-sound system using your TV as a central speaker.

SUPERB DESIGN AND ADDITIONAL FEATURES

With next-gen Ambilight, LEDs behind the screen immerse you in a halo of colourful light that's more detailed, better defined, and more in sync with the action than ever.

Other highlights include AI voice control (works with Google Assistant or Alexa) and Google TV, so you can watch whatever you want and even get recommendations.

This TV is perfect for gamers, as it makes the most of next-gen gaming gear with super-responsive gameplay and smooth graphics. VRR and FreeSync are both supported.

The 4K Ambilight TV measures 65 inches (164cm), and its slim, attractive design works great in any room.



Scan here to find out more

GET SMART

Demystifying TV terms

When you know what the jargon means, deciding what's right for you will be a breeze.

TV talk

Shopping for a new TV? We decode the most common tech terms you'll come across to help you make an informed choice.

TEXT Andrew Y

It's a great time to buy a new TV, with the newest models promising to give you the best picture quality, realistic sounds that will blow you away, and a range of advanced features that will take your viewing and gaming experience to the next level.

But deciding what type of TV to buy isn't always easy, and reading the descriptions of the latest high-tech models can make anyone's head spin. For instance, do you know the difference between an OLED and a QLED TV? And what do terms and abbreviations like Quantum Dots, contrast ratio and HDMI 2.1 mean for you as a consumer?

It's important to familiarise yourself with these and other descriptors, because the better your understanding of what's out there, the more confident you'll be when making your final choice.

Here's a guide to some of the most common terms you'll come across when shopping for a TV.

4K

This refers to a resolution of 3840 x 2160 – four times the pixels of Full HD (or about 8 million pixels). 4K resolution is what you'll find on premium large-screen TVs. A top benefit of 4K TVs is improved image quality, with images looking sharper, clearer and more detailed.

Aspect ratio

This refers to the ratio of width to height of an image or TV screen. Widescreen TVs commonly have an aspect ratio of 16:9.

Contrast ratio

This describes the difference between the minimum brightness and maximum brightness of a monitor. A higher contrast ratio means that the TV can display subtle colour details.



Dolby Vision

Developed by Dolby Laboratories, Dolby Vision is a stunning HDR (high dynamic range) imaging technology that brings extraordinary colour, contrast and brightness to the screen.

HD and Full HD

High-definition (HD) and Full HD refer to two different resolutions – the first, also called 720p, refers to a screen with a resolution of 1280x720 pixels, while the second, also called 1080p, refers to a screen with a resolution of 1920x1080 pixels. Full HD is the resolution currently found on most TVs and has a smoother, clearer image.

HDMI

Short for High-Definition Multimedia Interface, HDMI is a technology used to transmit high-definition video and audio signals through a cable. HDMI cables are what connects devices like gaming consoles and soundbars to your TV.

HDMI 2.1

The latest version of HDMI, HDMI 2.1 allows for higher resolutions like 8K, higher frame rates of up to 120 frames per second (fps), and a lot more bandwidth. Among its main benefits are clearer, sharper images and better sound quality.

HDR

Simply put, High Dynamic Range is a feature that improves brightness and colour range, making the visuals on your TV appear more detailed and life-like.

LCD

LCD stands for Liquid Crystal Display. It is the most affordable display type on the market. LCD TVs use liquid-crystal displays to produce images.

LED

LED stands for Light Emitting Diode. Diodes are semi-conductor devices that are used as backlights to project the TV picture. An LED TV uses LEDs to backlight the display and is said to be better for brightly lit environments.

OLED

OLED stands for Organic Light Emitting Diode. Unlike an LED TV, OLED TV screens have no backlight, which is why they are generally ultra-slim. OLED TVs also produce more vibrant colours, the inkiest blacks and the best contrast levels.

Pixel

Short for Picture Element, a pixel is a single dot or square of colour on a picture. Resolution refers to the number of pixels that compose the picture on the TV; the more pixels on the picture, the higher the resolution and the better the picture quality.

QD-OLED

This is a hybrid display technology that takes the best features of OLED and combines them with quantum dots. The result: brighter, more saturated colours.

To check out the full range of TVs available, scan here



QLED

This stands for Quantum Dot Light Emitting Diode. A QLED TV is an LED TV that uses quantum dots to enhance the backlight. The images it presents are therefore brighter, more accurate and more colour-saturated.

Quantum Dots

These are emissive particles that deliver realistic colour and peak brightness.

Refresh Rate

Refresh rate refers to how quickly a TV screen “refreshes” an image. Higher refresh rates mean that the TV can display more frames per second. Most TVs have a refresh rate of 60Hz or 120Hz.

Smart TV

A smart TV is also known as a connected or Internet-enabled TV. It lets you enjoy content beyond traditional TV channels, because you can use it to stream music, movies and videos, browse websites, and connect to your computer or smartphone.

UHD TV

UHD stands for Ultra High Definition. A UHD TV has a minimum screen resolution of 3840x2160, or more than 8 million pixels. It is said to have a mesmerising picture quality and cutting-edge features to give an incredible level of visual detail. UHD is the successor of Full HD.



Sofa, so good

What should you look for when shopping for a new sofa? Our expert has the answers.

TEXT Leslie Ong

To check out the full range of sofas available, scan here



With so many sofa styles out there, it can be tricky choosing one that best complements your home and lifestyle without overwhelming your living room. If you have children and pets, you'll also want your sofa to be easy to clean and maintain. Most importantly, it should be comfortable, sturdy, made from quality materials, and look good and on-trend for at least several years.

So, how do you go about selecting the right one? We asked Gain City expert Ronald Lim, Director of Furniture/Bedding/DIY, for tips and advice.

Three rules: Design, comfort and functionality

Let these rules be your guide when shopping for a sofa, says Ronald. Of course, aesthetics might be the first thing you're drawn to, but you should also consider how the sofa feels and whether it suits you and your family's needs.

Additionally, you should keep in mind the size of your living room, your preferred upholstery material, and how the sofa will look with your other furniture and accessories.

The new Elan recliner checks most of these boxes, Ronald adds. It boasts comfortable armrests and a modern metal leg design.





Colour and style

“There are no rules when it comes to style because it depends on your personal taste,” says Ronald.

“For example, English-style rolled arms may be popular in some European countries, but in Singapore, we tend to lean towards a more Scandinavian aesthetic.

“While some adventurous people might go with a bold and vibrant colour for their sofa, we believe that neutral, muted shades will never go out of style. They’re easy to work with, and you can always jazz them up with colourful accessories.”

Size matters

If your living room is small, Ronald recommends a sofa with a low back, as this can help open up the space. He suggests choosing a sleek silhouette, or maybe a modular or sectional sofa whose pieces you can easily move around.

Cushioned for comfort

“Foam- and fibre-filled cushions are more common in Singapore,” Ronald points out.

“Foam maintains its shape over time and foam-filled seat cushions allow you to sit on your sofa rather than in it.”

If you like “sinking” into your sofa, then cushions filled with feather or down are a good choice, as they’re plush and mould to your body.

The downside of feather- and down-filled cushions is that they don’t keep their shape too well, Ronald adds.

Another popular filling is pocketed spring with fibre for comfort. Pocketed spring is known for its resilience and support, and generally holds its form longer.

Regardless of filling, it’s actually the seat suspension that primarily determines the comfort – be it sinuous springs or webbing. If the wood frame is the skeleton

of the sofa, the spring is similar to the tendons and ligaments that cushion the structural stress.

Make it strong

“Kiln-dried hardwood is considered most suitable for furniture, as kiln-drying removes 70 to 80 per cent of moisture, which makes the wood more resistant to warping,” says Ronald.

“Hardwoods are strong, durable, and can withstand heavy weights over the long term.

“Don’t neglect the screws and dowels, which play a big part in holding the frame together. Avoid buying a sofa that’s only been assembled with staples, nails and glue.”

Versatile sectionals

Sectional sofas are quite popular, but Ronald says that the most important consideration when buying one is the size of your space.

Sectionals are versatile because you can easily configure them to suit different room layouts. You can add, remove or rearrange the pieces according to your needs. This style of sofa is good if you want to maximise seating capacity.

Ronald recommends checking out the new Dorma Chester, as you can play around with the configuration to come up with different combinations to suit your living room.





Keep household pests away

Tips to rid your home of annoying mosquitoes, ants, cockroaches and more.

TEXT Andrew Y

There are some household guests we can all do without – think flies that buzz around your food, ants in the pantry, and cockroaches that live under the fridge and only come out at night.

Besides being annoying and difficult to eradicate, these and other pests can cause a range of health problems, including allergic reactions, skin irritation and infectious diseases,

some of which may be life-threatening. What's more, they can damage your home and belongings, contaminate your food, and even harm your pets.

Fortunately, there's a lot you can do to safeguard your home against these pests. You don't always have to resort to insect repellents, either, as there are safe, natural and eco-friendly ways to get rid of them for good.

Ants

Ants live in colonies, so if you see a couple, you can be sure that there are many, many more. If you see a large number of them or come across ant pathways or nest sites, it's a sign of infestation.

There are many different types of ants, from ghost ants (or sweet ants) that are attracted to sweet foods, to Pharaoh's ants, which are also drawn to food and like to hide and build nests indoors.

Before calling in a pest control company, you may decide to handle the problem on your own first.

Good riddance!

- Store food in airtight containers.
- Clean up any food or beverage spills right away. Wipe up food crumbs from the floor and tables – check that there are no crumbs or spills under your appliances, too.
- If you have a pet, discard their leftover food immediately.
- Seal cracks in windows and doors.
- Mix one part vinegar to three parts water and spray the mixture wherever you spot ants to disrupt their trail.
- Spread table salt around crevices and corners to keep ants away. The salt creates a barrier that repels them.

Mosquitoes

Mosquito bites often leave red, itchy bumps. These insects can also spread life-threatening viruses such as the dengue virus, the Chikungunya virus, the Zika virus, and the Japanese encephalitis virus, as well as malaria.

Common symptoms of mosquito-bite infections include skin rash, fever, loss of appetite and joint pain. More seriously, they can cause persistent vomiting, severe abdominal pain and fatigue.

In Singapore, mosquitoes are active year-round.

Good riddance!

- If mosquitoes are a problem in your area, sleep with your windows closed and under a mosquito net.
- As mosquitoes breed in water, remember to change the water in vases, buckets and bowls every other day. Turn over any containers you aren't using to stop water from collecting in them.
- Clear any blockages around your home to prevent a build-up of stagnant water.
- Before going out, apply mosquito repellent to exposed skin to help prevent bites. Reapply the product as directed on the package. If possible, wear long-sleeved tops to cover exposed skin.

Cockroaches

These pests are nocturnal, which is mainly why they're so difficult to get rid of. They're often found in kitchens, toilets, behind washing machines, or under the fridge or stove because they prefer warm areas.

If you see dead or live roaches around, it's possible that you have an infestation. It's essential that you get rid of them and work to prevent them from coming back, because they are a health hazard.

Good riddance!

- Store food in airtight containers.
- Cover rubbish bins with a tight-fitting lid.
- Don't leave piles of newspapers or boxes around, as cockroaches love to hide in them.
- Clean under large kitchen appliances regularly.
- Mix 15 drops of peppermint essential oil with about 300ml of water and spray the mixture around infested areas. Peppermint oil is a well-known pest deterrent.
- Sprinkle baking soda on food, like an onion, and place in the spot where you saw the roach. The critters will ingest the baking soda, which is like a poison for them.



Mould

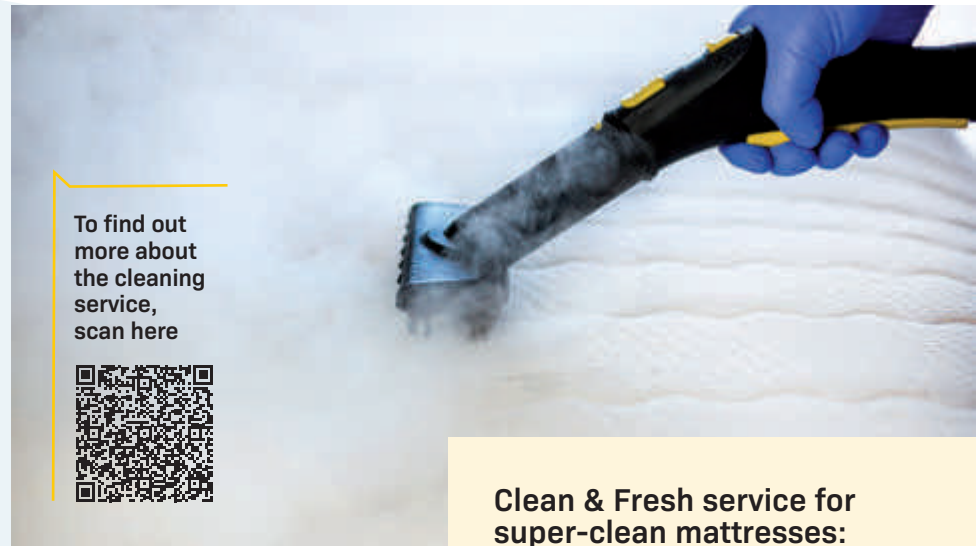
While not technically a pest, mould can be annoying to deal with. You'll find mould in warm, damp areas, like bathrooms, although you may also spot mould growth on walls or even your leather shoes and fabrics. Unfortunately, our humid climate makes mould hard to tackle.

Mould is unsightly and can cause unpleasant odours. Plus, it's a known trigger for respiratory illnesses like asthma and blocked sinuses. Sometimes, they can cause headaches and skin rashes.

- If possible, keep damp spaces well-ventilated.
- Dry wet areas immediately.
- Wipe condensation from windows and walls.
- Combine tea tree oil and water in a spray bottle, spray onto mouldy spots, leave for two hours, spray again and then wipe the area dry.
- Undiluted white vinegar is known to kill mould. Spray directly onto the mould, leave for 30 minutes and then wipe down with warm water.

Say bye-bye to this unwelcome house guest

Maintenance & Repair Manager Mic Fong from Gain City's Clean & Fresh service answers our pressing questions about the hazards of dust mites.



Where are dust mites commonly found in the home?

In pillows, mattresses, box springs, blankets, cotton curtains, rugs and carpets, plush toys, and fabric-upholstered furniture such as sofas.

How can dust mites affect our health?

They can cause runny nose, watery eyes and sneezing. In severe cases, they may cause persistent sneezing, coughing, nasal congestion, facial pressure and even a severe asthma attack. People with asthma who are sensitive to dust mites face an increased risk of asthma attacks.

Besides dust mites, what other nasties can our mattresses harbour?

Bed bugs, bacteria and other microorganisms.

Clean & Fresh service for super-clean mattresses:

We spend one-third of our lives in bed, so it's important to keep our mattresses clean. Dust, dust mites, dead skin cells, mould spores, stains, food residue and body perspiration can all build up on our mattresses, disrupting our sleep and triggering skin allergies and respiratory problems.

Generally, it is recommended that we get our mattresses professionally cleaned every three to six months, and more often (every one to two months) if you suffer from sinus problems or skin allergies. Regular cleaning also helps extend the life of your mattress.

Gain City's Clean & Fresh mattress cleaning service keeps your mattress free of dust mites and other allergens that can affect your health and sleep quality.

The service includes vacuuming to remove contaminants, dust mites and allergens, shampooing to remove dirt and unpleasant odours, and repeat vacuuming to remove residual shampoo.

For more information, call 6222-1212.

KÄRCHER

DOUBLE YOUR EFFICIENCY WITH THE FC 2-4 FLOOR CLEANER.

Remove wet and dry dirt in one step. Experience 20% better cleaning performance.*



Become Unstoppable
Get new energy with the detachable 4V battery.



Reach the Unreachable
Easily clean hard-to-access areas.



Made in Europe

*In comparison to a conventional mop.



A thorough clean

Dirty hard floors are no match for this powerful cleaner.

Taking a cloth mop to your hard floors is a thing of the past, thanks to the Kärcher Hard Floor Cleaner FC 2-4 Battery Set. Simple, fast and effective, it removes dry and wet daily dirt in one step.

ALL-IN-ONE CLEANING

The FC 2-4 saves you time as it picks up coarse dirt in a flash, plus it has an integrated hair filter to get hair off the floor. It also has an exclusive floor head design to clean sharp edges.

Wiping is 20% cleaner than with a mop: The two tank system permanently wets the rollers from the freshwater tank while the dirt is collected in the dirty water tank. And the roller is machine-washable at 60°C.



CONVENIENT AND EASY TO USE

The FC 2-4 is equipped with a detachable 4V (2.5 Ah) battery, which can clean an area of approximately 70 sqm per battery charge, making it ideal for small apartments.

The automatic On/Off switch eliminates the need to bend down to turn the appliance on or off.



Scan here to find out more

Clean & Cool In Every Corner Of Your Home



acerpure clean V1
Cordless Vacuum Cleaner

acerpure cozy F2
Air Circulator

Home essentials

Just what you need to keep your space clean and cool.

Most of us can't live without a fan and a vacuum cleaner. Acerpure, which specialises in high-efficiency and high-intelligent purifying technological products, offers these two must-haves for the home.



PURE BREEZE

The AcerpureCozy F2 fan has a powerful airflow distance of up to 25m and covers areas of up to 99 sqm, thanks to 16 precise speed settings. Feel the breeze from every



angle – the fan rotates up and down and left and right. Plus, you can place it anywhere as it has two height modes (table and stand) that can be configured in less than 30 seconds. The fan can also be remote-controlled from 10m away.

CLEANING POWER

Vacuuming is a joy with the Acerpure Clean V1 vacuum cleaner. With its powerful 23000 pa vacuum suction power and built-in LED light on the main brush, dust cannot escape. It also boasts a long battery life (up to 60 minutes), and includes accessories like a mite removal brush and a crevice nozzle. Want to keep your hands clean? One press is all you need to empty the dust compartment.



Acerpure Clean V1



Acerpure Cozy F2



Scan here to find out more

TOSHIBA

Freshness Matters. Fresh In Fresh Out

Premium Refrigeration Without Breaking The Bank.



Freshly chilled

Toshiba's Multidoor Fridge gives all types of food the cold treatment.

When you want to chill or freeze food in a hurry and ensure that your ingredients retain their flavour while freezing or defrosting, you can trust the Toshiba Multidoor Fridge (Model: GR-RM631WE-PGX) to get it right.



The lifting guard rail of the refrigerator chamber



iTouch Gesture-Sensitive Touch Door



60-Minute Rapid Ice Making

MULTI-MODE CHILLED ZONE

There are three storing modes to keep ingredients well-preserved and the temperature is easily adjusted with the touch of one button.

Chill Fresh mode provides a constant low-temperature environment to keep food like meat and even fish fresh, tender and flavourful for days. Vegetables remain intact so that they retain their texture and nutrients when taken out of the freezer.

Rapid Unfreeze mode unfreezes food in 30 minutes, wrapping cold air around it to reduce moisture loss and prevent it from drying out. The temperature is maintained below -18°C during the defrosting process.

Quick Soft Freezing mode delivers moist, cold air to keep ingredients partially frozen. Freeze even warm food rapidly, thanks to Toshiba's powerful freezing system.

OTHER FEATURES

The 488-litre-capacity fridge also has an iTouch Sensory Control Door, which opens with just one touch. Plus, it automatically makes ice in just 60 minutes – the fastest in the industry.

Available in Mirror Glass Black and Ivory Golden, with 3-tick energy efficiency, this multi-functional fridge certainly offers premium quality at an affordable price.



Scan here to find out more

Haier



R32
Refrigerant



High
Efficiency



Smart
WiFi



Extended
Warranty



Low Sound
Level



Sleep
Mode



Optimized
Cooling



3D
Airflow



Play it cool

Energy-saving air-conditioners
that work smart.



As one of the world's leading home appliance brands for 14 consecutive years, Haier is known for its high-quality products and technological innovation.

AIR-CONDITIONERS FOR MODERN HOMES

When your family's comfort is your priority, only the hardest-working and most energy-efficient appliances are good enough. This includes an air-conditioner system that's advanced, designed to cool your home effectively while saving energy,

and with all the features to suit your modern lifestyle.

HAIER FLEXIS SMART SERIES

Haier's range of Flexis Smart Series air-conditioners carries an Excellent Energy Saving Efficiency rating with five ticks, as well as an extensive range of features such as Wi-Fi, Low Noise, 3D Airflow, Sleep Mode, Optimized Cooling and more. Haier

air-conditioners also include an extended warranty comprising a three-year General Warranty and a six-year Compressor Warranty for peace of mind.

Sumber Co. Pte Ltd, established in 1978, is the official distributor for Haier air-conditioners in Singapore.



Scan here to find
out more

**We heard
you!**

That's why we put
together the best
deals and special
offers for you, our
valued members!

**JUST FOR
YOU**

Get all you need to create the home of your dreams

92

To join
Gain City's
Group Buy
programme,
scan here



To join Gain
City's Cityspace
Interiors Event,
scan here



From appliances at the lowest prices to expert renovation and interior design services, Gain City is every new homeowner's one-stop shop for a beautiful and functional dwelling.

TEXT Wilson Tan

Now that you have the keys to your new home, you might be preparing to renovate it and then fill it with furniture and appliances.

This can be a time-consuming, confusing and often costly process as you try to source the right interior designer to get your home looking just the way you want it, while also traipsing all over Singapore in an attempt to select kitchen appliances, beds and mattresses, living room

furniture sets, lighting options, and so on.

But creating your ideal home needn't be complicated or stressful. Gain City offers new homeowners the chance to purchase all their home appliances and furniture at the lowest cost, as well as pick up expert renovation tips and advice from its trusted interior design partners. And all in one place.

Here are more details about what new homeowners can enjoy with Gain City.

Group Buy events to help you save on appliances

Whether you're moving into a BTO, resale flat or private condo, you can join Gain City's exclusive Group Buy for New Homeowners programme. Once you're a part of this programme, you'll receive invitations to Group Buy events, where you can snag bundle deals, promotions, and discounts off smart home gadgets and home appliances.

The event makes your purchasing journey easier, more enjoyable and more affordable. Gain City has teamed up with some of the world's leading appliance manufacturers to offer its programme members amazing, value-for-money

deals on everything from washers and dryers to refrigerators, air-con units, TVs, furniture, mattresses and more. These deals cannot be found anywhere else.

With this Group Buy programme, you're guaranteed the lowest prices on a wide variety of brands and products. And the best part is that you can get everything for your home under one roof, so there's no need to travel from one store to another looking for the best-value deals.

Gain City has also partnered with financial institutions to offer you flexible repayment packages

and 0% interest rate repayments.

Other perks of the programme include: Family Card loyalty points, Gain City cash vouchers, free delivery on your purchases and the highest quality installation services.

It's free to join Gain City's Group Buy for New Homeowners programme. Scan QR code to RSVP or find out more.



Renovating and designing the ideal living room, dining room, bedroom and kitchen just got easier and more fun with Gain City's Cityspace Interiors Event.

Expert renovation advice

Attend this event to meet experts from three interior design firms that have partnered with Gain City to offer homeowners a free, personalised consultation and quote for home renovation and design jobs. With these experts all present at the one session, there's no need for you to be setting up meetings with multiple companies or trying

to chase down the lowest quote.

What makes this event most convenient is that you can compare different quotes at one go before making your decision. Each interior designer has a specialty, and by choosing the one with the right expertise and experience, you can potentially save thousands of dollars on your home

renovation costs, and all without compromising on design and material quality.

Furthermore, the renovation and design experts can help you plan your budget and allocate resources effectively so that you can bring your vision to life with little to no fuss.

Scan QR code to RSVP or find out more.

JUST FOR
YOU

Flash for fantastic deals!

The Gain City family card or app lets you enjoy amazing discounts at participating stores or on the respective websites.



TRAVEL

Make your next vacation safe, convenient and worry-free with packages from **Changi Travel** and **ChangiAssure!**

DINE

Go meat-free at **Eight Treasures Vegetarian Restaurant** or **Well Smoocht** or get nostalgic at **Old School Delights**.



LEARN

Brush up on your hobby and craft skills at **Playground Hobby Store**. At **Music Story**, group and individual classes let you discover your inner Taylor Swift.



Sign up for a free Gain City Family Card membership to enjoy shopping, dining and lifestyle privileges! Visit gaincity.com



Photos: iStock

Don't miss these...

FOOD & BEVERAGES

- BLANCO COURT BEEF NOODLES** Purchase any main dish to enjoy a side dish of your choice for \$3 (U.P. \$4.90).
- CHANGI BEACH SEAFOOD PARADISE** 10% off a la carte food items.
- EIGHT TREASURES VEGETARIAN RESTAURANT** 10% off regular-priced items with min. \$50 spend for dine-in only.
- OLD SCHOOL DELIGHTS** 10% off total bill.
- STAMFORD CATERING** \$10 off with no min. spend only on Full Regular Buffets, Mini Buffets and Mini Party Sets. Promo code: [GAINCITY10SF](https://www.stamfordcs.com.sg/) applicable only for online orders at <https://www.stamfordcs.com.sg/>
- SWEET SWEET FOOD SUPPLY** 10% off with min. \$100 spend.
- WELLSMOOCHT** 10% off regular-priced items with min. \$50 spend for dine-in only.

FASHION & ACCESSORIES

- BATA** 20% off with min. \$60 spend.
- CITY CHAIN** \$5 off with no min. spend on online purchases only. www.citychain.com.sg Discount code: GAINCITY5
- GIORDANO** 10% off regular-priced items.
- GOLDWOOD** 10% off regular-priced items on online purchases only. www.goldwood.sg Discount code: GAINCITYX6W
- L'ZZIE** 10% off regular-priced items on online purchases only. www.lzzie.com Discount code: GAINCITYXLZZIE

HEALTH & BEAUTY

- HAIRITAGE HOUSE** 50% off hair colouring packages.

- HOLISTIC WAY** \$5 off with min. \$50 spend on online purchases only. www.holisticway.com.sg Discount code: GAINCITY5
- KINOHIMITSU** Up to 20% off with min. \$80 spend on instore and online purchases. <https://sg.kinohimitsu.com/> Promo code: KINOGAINCITY20
- LAC NUTRITION FOR LIFE** 30% off 1 regular-priced LAC supplement & free 2-year LAC Club membership (worth \$15) with any purchase.
- NAILZ GALLERY** \$132 for 6 classic mani sessions (U.P. \$168); \$198 for 6 classic pedi sessions (U.P. \$228)
- Q&M DENTAL** Over 20 dental treatments at corporate fixed rate.

TRAVEL & LEISURE

- CHANGIASSURE** 5% off any ChangiAssure Travel Insurance. https://bit.ly/CAXGainCity_2324 Promo code: 5OFFGAINCITY
- CHANGI MOBILE** 80% off mobile subscription plan for 1st month subscription. https://bit.ly/CMxGainCity_2324 Promo code: 80OFF
- CHANGI TRAVEL eSIM** 9% off travel eSIMs. [Changirecommends.com/eSIM](https://changirecommends.com/eSIM) Promo code: GAIN9OFF
- CHANGIWIFI** Free 1 day off ChangiWiFi rental on min. purchase of 5 days. [Changirecommends.com](https://changirecommends.com) Promo code: GAINJ5 (KR, JP, TW, TH, HK, CN, VN); GAINM15 (MY, ID); GAINAU5 (AU, IN, LK, KH, PH); GAINEU5 (EU + UK, US); GAINNZ5 (NZ, FI, MV, IL, OM, QAT, UAE, SA)

ENRICHMENT & OTHERS

- DU YI BOOKSHOP** 10% off regular-priced items.
- MUSIC STORY** 25% off individual (\$1,800 for 16 sessions) and group classes (\$388 for 8 sessions).
- PLAYGROUND HOBBY STORE** 50% off full-day track fee of \$20; 10% off regular Tamiya products; random door gift for first-time visitor.

Terms & conditions apply for all promotions.



GIORDANO GOLDWOOD Hairitage House



Find out more!



Read City Living 24/7 online!

Get access to the latest in home appliances and decor tips with your digital copy. See something you like? Just click and check out! It's that easy.



Tips & hacks



Ideas you'll love



Click & shop



Scan the QR code to read the magazines.

cityliving.com.sg

JUST FOR
YOU

Editor's choice

We celebrate the man of the house with gift suggestions that are definitely Dad-approved.



Blue Yeti Gx
Gaming Microphone

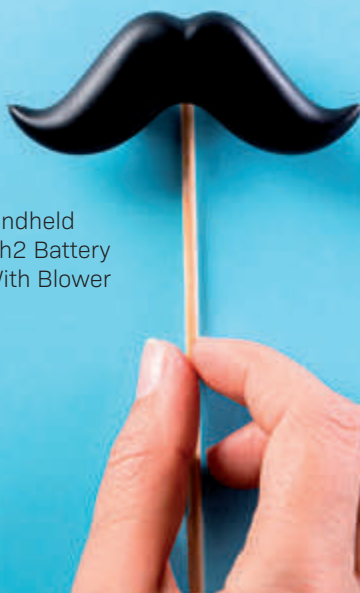


Yoose MINI
Rotary Shaver

HAPPY Father's ... ❁ DAY ❁ ...



Karcher Handheld
Vacuum Vch2 Battery
Powered With Blower



Brandt Wine Cooler
Cav50x


WORLD OF NAZARIO

A new standard in luxurious,
comfort living with superior sofas

PRODUCTS. PASSION & QUALITY

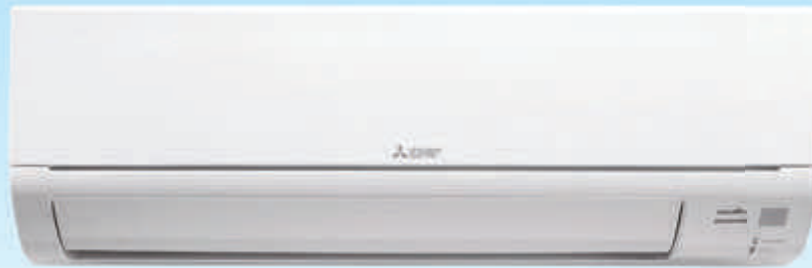
Our design and production team works passionately hand-in-hand to create different leather sofa collections to fulfil the varied needs and requirements of our customers. Comfort and ergonomics are our top priorities. One of the reasons for our customer loyalty is our consistent quality. Every sofa interior and exterior is crafted with the finest finishing. There is meticulous attention to detail given at every stage of production. Only premium quality materials are used with the latest technologies and skills to produce sofas of uncompromising quality.

GAIN CITY MEGASTORE @ SUNGEI KADUT
71 Sungei Kadut Drive, Singapore 729577



MITSUBISHI ELECTRIC

Changes for the Better



EXCELLENT
Energy Savings

QUIETEST
19dB

EASY
To Clean!
Easily accessible
Inner vent

Mitsubishi Electric
star MEX
Air-Conditioner



MUY-GP10VF



MXY-2H20VF



MXY-3H28VG



MXY-4H33VG



MXY-4H38VG



MXY-5H48VG



SUY-ZM50VA-SG

**WIDE RANGE OF EXCELLENT ENERGY SAVINGS
5-GREEN TICKS AIR-CONDITIONERS IN SINGAPORE**

