

Cityliving™

cityliving.com.sg

ENERGY SAVERS

Smart cost-saving tips you'll love

ONSCREEN

Bigger, better and sharper TVs to look out for

BTO GUIDE

What's next now that you've got your keys?

VOL 5

SIMPLY HOME

BREATHE EASY,
BREATHE CLEAN

PRISTINE SOLUTIONS

S\$5.00

VOL 5 • 2022



8 4888737 511714 >



**MITSUBISHI HEAVY INDUSTRIES
AIR CONDITIONERS**

MOVE THE WORLD FORWARD



HIGH PERFORMANCE RESIDENTIAL AIRCONDITIONING



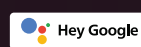
PHILIPS

Television

OLED806 series



Uniquely immersive. 4K UHD OLED Android TV



The advertisement features a large, modular Samsung Bespoke refrigerator system on the left, composed of several vertical and horizontal panels in various colors including light green, dark blue, white, light blue, grey, and pink. To the right, a kitchen scene is shown with a purple wall, orange shelves holding various items, and a lower cabinet with orange and teal drawers. The floor is split into grey tiles on the left and light wood on the right.

SAMSUNG

INTRODUCING THE NEW

BESPOKE

Designed for you, by you.

Your BESPOKE. Your way of life.

Say hello to an all-new line of refrigerators that is designed modular and customisable to meet every life stage.

Start designing your very own BESPOKE fridge today.

SAMSUNG

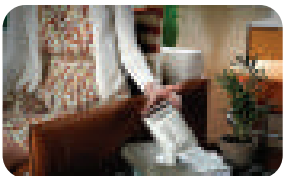


Introducing The Freestyle

Smart TV - Projector - Speaker. All in one

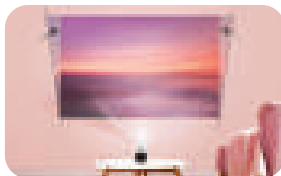


All Round Design



Project your favourite contents at any angle, any surface with a 180° round design with cradle stand

Instant Setup



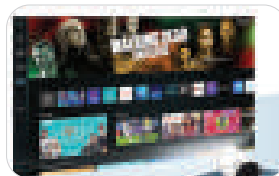
Automatically adjust and shift the screen without moving the device

Premium 360 Sound



Enjoy premium sound with powerful 360 speaker

Smart TV Experience



Enjoy all Samsung Smart TV features on your projector



Scan to learn more

CONTENTS

AT HOME WITH...

10

Simple pleasures

16

More than minimalist

BEST NEW FINDS

22

Screen magic

26

For kids' sake

GET SMART

34

Safety rules

40

Smart changes for big savings

46

Never lock yourself out again

VOL 5 • 2022

THE COVER



DJ Wei Long's bachelor pad echoes his passion for sports and music.

PHOTOGRAPHY
Wong Wei Liang



58



HOME INSIDER

74

Three inspiring
K-pop homes

78

Make your BTO
move-in ready

86

Living with
fengshui

JUST FOR YOU

92

Celebrate 41 years
with us!

93

Relish the best
shopping privileges!

94

Reycle your
air-con for cash

96

Editor's choice

COOL STUFF

54

Get more mileage
out of your
air-conditioner

58

Bringing the
outdoors in

60

Bring the farm home

62



62

Because we love
our furkids...

66

A chef's journey



66





Editorial Advisors

Publisher
Kenny Teo

Editorial Publisher
Walter Lim

Digital Marketing Manager
Dennis Law

Digital Marketing
Gerald Foo

Technical Advisor
Teo Meng Hwee

Contributors
Andeline Sim,
Josiah Tan Yan Chong,
Valerie Teo & Cher Yeo

Editorial & Creative

Supervising Editor
Maureen Ho

Publishing Editor
Dora Tay

Executive Sub-Editor
Leonard Lau

Art Director
Fish Chan

Contributors
Airis Abdullah, Brian Chia,
Rachel Goh, Sasha Gonzalez,
Hong Weixi, Erina Noor,
Sol E Solomon, Annie Tan,
Michelle Wong, Vernon Wong,
Wong Wei Liang &
Yoong Choon Hwa

Administration & Editorial Support

Commercial Lead
Lim Wei Yang

Solutions Development Assistant Manager
Neo Pei Shi

Marketing Lead
Margaret Tan

Assistant Manager
(Publishing Services)
Rahmah Aman

CITY LIVING™ is published by Gain City Best-Electric Pte Ltd
8 Ang Mo Kio Industrial Park 2,
Singapore 569500
Tel: +65 6565 1212
Fax: +65 6555 1212
Website: www.gaincity.com
Business Registration No.
199304709Z

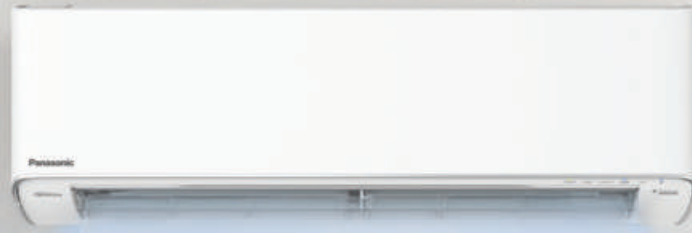
For advertising enquiries:
advertising@cityliving.com.sg

Publishing Agent:
Focus Publishing Ltd
(A subsidiary of SPH Media Holdings)

Printer & Colour Separation: KHL Printing Co. Pte Ltd
Distributor (Singapore): SPH Media Limited

MCI (P) 003/10/2021. City Living™ Magazine is published by Gain City Best-Electric Pte Ltd (Registration No. 199304709Z). Copyright of the material belongs to Gain City Best-Electric Pte Ltd and all rights are reserved by said party. This publication, in part or in whole, is not to be reproduced, stored, and transmitted, digitally or otherwise, without the prior consent of the publisher. The views and opinions expressed or implied are those of the authors or contributors and do not necessarily reflect those of the publisher. Although all precautions have been taken, we shall not be held liable for any actions taken based on views expressed, or information provided within this publication. © 2018

Panasonic



X-Premium Inverter

PANASONIC BRINGS COMFORT
AND SAFETY INTO YOUR HOME

Make your home a safe haven for your loved ones with quality air. Panasonic X-Premium Inverter Multi Split air conditioners are equipped with nanoe™ X technology which effectively inhibits up to 99.7% of Novel Coronavirus in 24 hours*. nanoe™ X keeps you and your family safe indoors with 24-hour active air protection. Smartify your air conditioner anytime, anywhere with Comfort Cloud App and cool your house before reaching home.

Panasonic Air Conditioner, giving you quality air for life.

*Research by Texcell SA(France) in January 2021. Test conditions apply.



INHIBITS VIRUSES, BACTERIA,
AIRBORNE PARTICLES







CLEAN & FRESH AIR

QUALITY AIR FOR LIFE

STORE A MEDLEY OF DIFFERENT BEVERAGES, ALL IN ONE CHILLER.



KB40WBC

-  Dual Compartments
-  Dual Temperature
-  Ideal for Wine & Canned Drinks
-  Black Stainless Steel Finish



  @KadekaSingapore | www.kadeka.com

A medley of features

**Kadeka's new Wine Chiller Series
comprises compact wine chillers
that are big on solutions.**

KB40WBC



For those of us with limited space in our homes, it can be frustrating trying to find a wine chiller that would fit our homes perfectly. Kadeka has the solution to this problem with their chic Medley Wine Chiller Series.

Kadeka Medley KB40WBC is the first wine chiller to feature a separate compartment with its own temperature zones of 5 to 18 degrees Celsius and customisable racking system, suitable for storing and serving canned beverages, making organisation of your favourite drinks easy and simple.

Looks can be deceiving, and beautifully so in this case. The petite chiller can take up to 54 canned beverages and 25 bottles!

The black stainless-steel finish that comes together with a glass door gives you a clear view of what's stored in your wine chiller, and reminds you of what needs to be replenished. With its fully



extendable rails, everything is easily accessed as well. Another useful feature is the alarm that sounds when the door of the wine chiller is left open for more than 10 minutes.

As apartment sizes shrink and space becomes a premium, the Medley series makes a compact statement without compromising on features. Its convenience and functionality make it a suitable fit for any home, more so for HDB homeowners.



Scan here to find
out more

AT HOME WITH...

9

Keeping it light

Local celebs
walk us through
their cribs.



AT HOME
WITH...

Simple pleasures

10

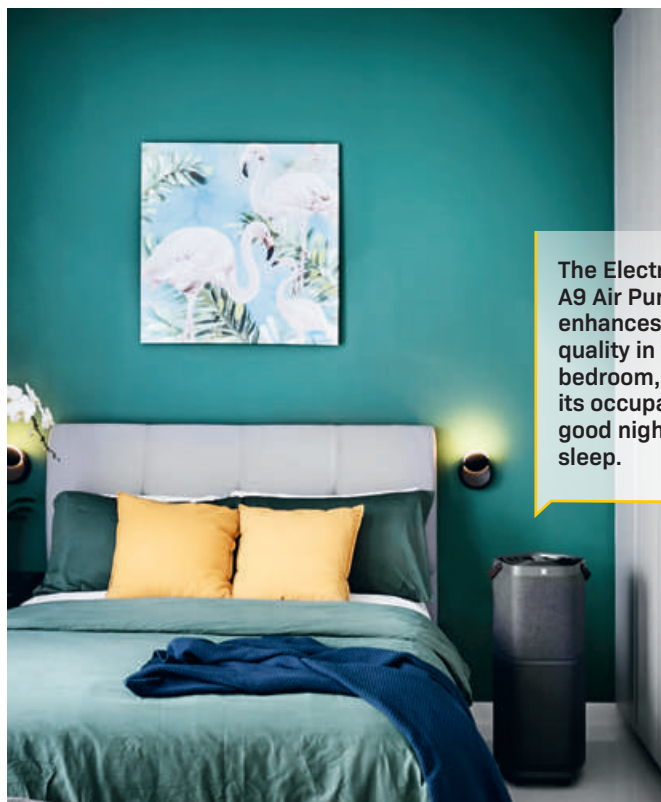
The apartment's modernist interior is a stylish symphony that reflects its owner's passion for sports and music. City Living finds out how UFM 100.3 DJ Wei Long weaves elements of his character into his home.

TEXT
Rachel Goh

PHOTOGRAPHY
Wong Wei Liang



The study, from where Wei Long usually works, is testament to his passions and interests.



The Electrolux A9 Air Purifier enhances air quality in the bedroom, giving its occupant a good night's sleep.

playing from Primary 3 or Primary 4! I am very active. I love to go to the gym, play tennis, run and swim. When I don't exercise, I don't feel good, so I prefer to keep my body active.

After exercising, I like to hang out with my friends or family as I really do appreciate quality time spent with them.

Your “On Air” sign speaks of the pride you take in your work. Speaking of which, tell us your favourite spot for work.

Wei Long: Initially, I did my work in the study room. However, I felt a bit cooped up in that area due to the lack of space. I've taken a liking to moving my laptop to the island to do work as my living area is more open and airy. The fact that I get to admire the scenery outside the balcony when doing my work is a bonus!

11

We love the contemporary vibe of your home. How does your design style mirror your personality?

Wei Long: I would consider my house to be modern yet minimalistic. I wanted to keep to the apartment's original colour of white, so I decided to make my home's design simple with black and white, with the occasional splash of dark green, as you can see from my bedroom and plants. I feel that my home reflects who I am: A simple guy who enjoys the simple pleasures in life.

Looking at the badminton racquets on your wall grid, you must enjoy doing sports. What do you usually do after coming home from a tiring yet fulfilling workout?

Wei Long: I've actually been playing badminton since I was young. I started



Details like the hexagonal wall tiles give Wei Long's kitchen visual impact.

AT HOME WITH...



We like how you've maximised the functionality of your home by interlinking the rooms. What advice would you give new homeowners with homes that have limited space?

Wei Long: When designing your home, you should take into consideration your lifestyle and how much space you need to live that lifestyle to the fullest.

I enjoy watching shows and movies on television, sometimes falling asleep in the process. Hence, I designed my home in such a way that it would be comfortable for me to continue this lifestyle. I placed a sliding wall between my living room and bedroom so that I can watch shows while lying in bed. For me, feeling cosy was an important factor that I considered when planning the interior design of my home.



You really put a lot of thought into your home's interior design. Which is your favourite feature?

Wei Long: My previous home lacked a sitting area for me to just chill. Hence, one of the main reasons why I purchased this place is because of the balcony. As my house is located on one of the higher floors, I get to be blessed with the view of a heartlands area of Singapore. I even get a clear, mesmerising view of the New Year's Day fireworks from my home!

I put a chair and some plants in the balcony area to provide a perfect environment for me to relax. Some activities I enjoy doing while sitting there are drinking wine and doing some light reading. I also enjoy thinking about life as I admire the view. Furthermore, at night, the breeze is very cooling, which is another reason why the balcony is my favourite feature of the house.



A cosy home with ample chillout spaces was an important part of the design considerations for Wei Long.



“The fact that I get to admire the scenery outside the balcony when doing my work is a bonus!”

Ask yourself: Which part of your home is your highest priority? For instance, as somebody who doesn't cook or host friends often, the dining room was not very important to me when designing my home.

What would a perfect day at home look like?

Wei Long: I am usually busy with work on

weekdays, but during the weekends, I like to wake up later at around 10 or 11am, depending on whether I have to do work over those two days.

In the daytime, I will definitely indulge in some form of exercise. As I live alone, I find that weekends are the perfect time to do some housework to keep the house tidy. My perfect day also consists of hanging out with my friends!

Full steam ahead with Bertazzoni

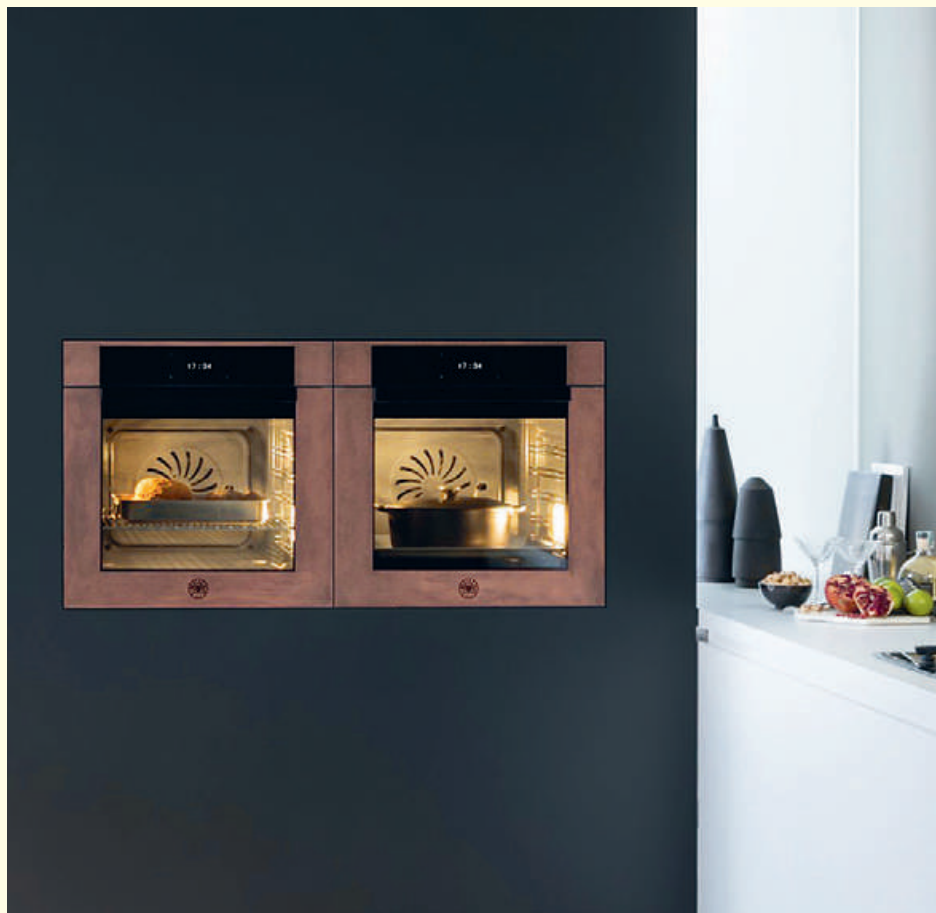
These steam ovens add Italian flair to any kitchen.

Add a splash of colour with Bertazzoni's latest range of modern steam ovens. House-proud homeowners can say goodbye to boring, homogenous kitchens with one of these beauties in their kitchen. Exclusively distributed by Capital Marketing (S) Pte Ltd, Bertazzoni pride themselves on combining industrial production methods and engineering skills with elegant Italian design flair.

For more than 135 years, Bertazzoni cooking appliances have been helping people bring the best in home-cooked food to the family table. With the Modern Series' new built-in range, Bertazzoni's designers have combined glass and precious metals along with years of knowledge and passion to craft the Bertazzoni Modern Steam Oven. The Modern Series, while trendy, is also timeless, with the clean lines of the machines achieved through touch control on the most advanced models, revealing an unparalleled vision for seamless integration.



F6011MODVPTC



The oven door has a black glass finish that blends perfectly with the window to give the oven a sleek, clean look, reminiscent of the paint finish on luxury sports cars. Furthermore, the oven is available in a variety of striking colours and metal finishes, including stainless steel, copper, zinc and matte black, letting you style your oven in a way that complements your kitchen aesthetic.

If you love being spoilt for choice, the TFT hi-res touch display gives remarkable flexibility when choosing cooking modes. It controls and displays oven functions, food probe management, total steam and steam assist management. The unique Bertazzoni Assistant, which any home cook will find invaluable, combines a digital programmer and food probe to help you set up and monitor your dish perfectly.

The Bertazzoni Modern Series 60cm built-in electric oven has a 76-litre capacity best-in-class cavity, allowing you to cook healthy dishes while preserving their nutritional

value, thanks to the steam function that cooks without condiments and fats. With the trusty Steam Assist function, you can also make your favourite recipes not only more tender, but even tastier as it adds steam injections of adjustable intensity to traditional ventilated cooking.

The oven is also a delight for bakers – with 11 functions that are ideal for mid-to-low temperature cooking – who enjoy cake-baking, with its non-convection mode. Its fan-assisted mode ensures even heat distribution on all five levels for roasting and baking with no flavour crossover.

Speed is of the essence in this day and age, and the Modern Series Total Steam Oven helps you create fast and healthy meals. Its removable water tank allows refill without interrupting the cooking programme. And, the oven is easy to clean, with a pyrolytic self-cleaning that's based on high-temperature cleaning and sterilising without detergents.



Scan here to find out more



Beautiful exterior, quality performance.

Introducing Bertazzoni Total Steam Oven - delivers the healthiest and most flavorful cooking results.



TOTAL STEAM

WITH 11 FUNCTIONS



PYROLYTIC SELF-CLEANING

WITH TFT DISPLAY



BERTAZZONI ASSISTANT

SMART COOKING



76 LITRES CAVITY

EXTRA LARGE



MADE IN ITALY

F6011MODVPT



STAINLESS STEEL

CARBONIO

COPPER

ZINC

Find out more at sg.bertazzoni.com | [f](#) [i](#) [@BertazzoniSg](#)

AT HOME
WITH...



The Electrolux 150W UltimateHome 900 Handstick Vacuum Cleaner is used mainly for cleaning up his pet cat's fur.

More than minimalist

Decked out from top to bottom with lightly coloured wood, UFM 100.3 DJ Cheng Yao's home is the true definition of "less is more".

TEXT Rachel Goh
PHOTOGRAPHY Wong Wei Liang

What was the inspiration behind using lightly coloured wood to decorate your home?

Cheng Yao: My home was actually inspired by Japanese interior design, where they use lighter colour schemes to make the atmosphere more cooling. I feel that my love for what I experienced in Japan inspired me to make this choice as well.

I chose this particular colour of wood and decided to use a lot of warm lights instead of white light to soothe the atmosphere at dusk. My home reminds me of my stays at Japanese houses and hotels, where the clean and warm feeling helped me relax at the end of each day. I really hope that my house can function similarly.

Furthermore, my place is small, so choosing to use lightly coloured wood makes my home feel more spacious in spite of its limited space.

Your house carries a chill and breezy feel. It does feel welcoming and relaxing. Where is your favourite spot to relax?

Cheng Yao: I actually have two favourite spots at home that I love to relax in. The first place would be my living room, where I've stationed beanbags in front of my bookshelf. I enjoy lying on the beanbags with a glass of wine as I lepak [Malay for loafing around] and read. The view from the window is amazing too, allowing me to admire the sky.

My second favourite spot is my island, which I carefully designed to make it a suitable place to eat and drink wine. I love the leg room and it is a place where I can host my friends and family when they come over as well, where we can all chill together.

It is an interesting concept to hide your library behind a sliding door, we never would have guessed that there was a

library behind the wall if you hadn't pointed it out to us!

Cheng Yao: Personally, I find bookshelves messy and difficult to maintain, especially for somebody like me who reads a lot. When I was designing my house, I wanted everything to be as neat and tidy as possible. I wanted the house to maintain a clean look and did not want my books to be in the way. Besides, the wall that conceals my bookshelves makes for an excellent backdrop for my Facebook livestreams!

With everything in its place, Cheng Yao's kitchen was designed as a functional chillout space.



AT HOME WITH...



“ Choosing to use lightly coloured wood makes my home feel more spacious in spite of its limited space. ”

18

The Electrolux Dishwasher in Cheng Yao's kitchen makes light work of dishwashing, especially after an evening of entertaining.





We heard meowing when we came through the front door. Are you a cat person?

Cheng Yao: I am definitely a cat person. In fact, I have a recreation room for my cat! When I was younger, I actually used to sleep with my cat. Now, when my mother comes over, I sleep with my cat on the bed in the recreation room. When designing my house, I wanted a place for my cat to feel safe, so I decided to give it its own room and space. My cat is not very sociable when it comes to meeting new humans and is a bit fearful of them. Thus, I designed this recreation room for my cat to hide when guests come over and for me to spend time with it.

As somebody who doesn't cook often, what did you prioritise when designing the kitchen?

Cheng Yao: I wanted my kitchen to be a functional gallery space designed to be a chill space with friends. The presence of an island was my main priority, so that it could serve as a storage space for me. I also wanted my island area to be a comfortable place for me to enjoy some "me time".

Do you have any advice for new homeowners?

Cheng Yao: The most important lesson that I learnt from designing my home is that you should take note of the features of your new home before coming up with its design. In my opinion, the best home designs are when the carpentry and design fits your lifestyle. It is also important to remind yourself what kind of person you are, so that you can design a home with aesthetics that reflect you.

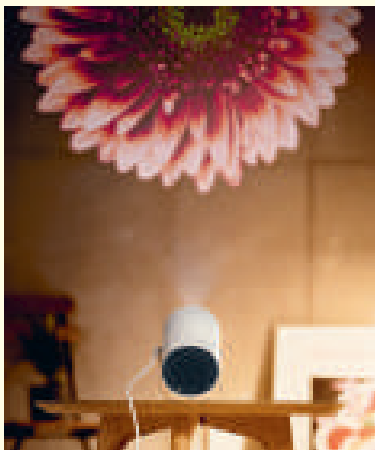


Be entertained wherever you are

The Freestyle from Samsung is a nifty screen and entertainment device that you can take anywhere.



Enjoy optimal viewing and entertainment wherever you go with The Freestyle from Samsung. This portable device is a lightweight, portable Smart TV that serves as a projector, smart speaker, and ambient lighting.



The Freestyle is easy to set up; to use, simply point and play. Enjoy a large-screen experience on various surfaces, from slanted walls to ceilings. Get brilliant picture quality too – The Freestyle can project screens ranging from 30 to 100 inches in vibrant, full high-definition resolution. It also has an adjustable cradle that rotates up to 180°, allowing you to display high-quality video even overhead without the need for a separate screen.

In addition, the device boasts a powerful audio system, which includes a 5-watt woofer and 360° sound radiation, for an immersive and cinematic audio experience.

The Freestyle is integrated with Samsung Smart TV features, which has built-in streaming services, mirroring, and casting capabilities

for Android and iOS mobile devices. This means you can easily access streaming apps, listen to your favourite playlists, and more.

Power up The Freestyle with an external USB-connected battery bank of 50W/20V output or above. You can also plug and play the device anytime with the provided USB-C cable. When not in use as a projector, The Freestyle can create an ambient lighting effect – choose patterns from lighting, prism and scenes or even your own photos.

In keeping with its moniker, The Freestyle offers three colour skins to suit your personal style. Choose from Blossom Pink, Forest Green and Coyote Beige. The skins are made of flexible rubber material which makes it a breeze for you to switch skin colour, depending on your mood.



Scan here to find out more

No place like home

Highlights of new TVs and ways to keep kids safe.

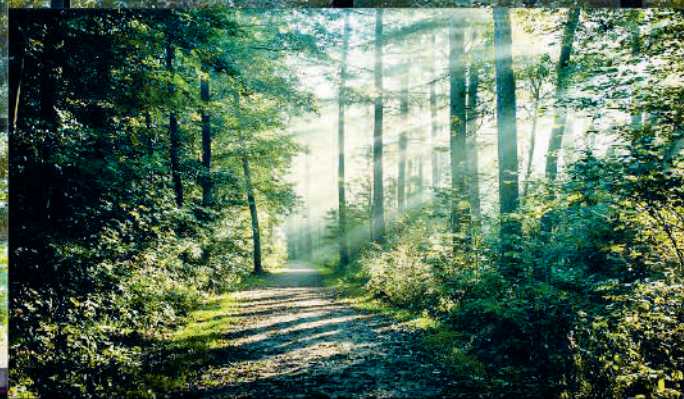
21

BEST NEW FINDS

Screen magic

A showcase of the bigger, better and sharper TVs to expect this year.

TEXT: Erina Noor



Televisions are getting bigger, brighter and sharper. At Consumer Electronics Show (CES), the world's largest consumer electronics and IT exhibition, this January, major television brands unveiled upgraded technology and new features, from QD-OLED to Mini LED technology. We take a closer look at some of them.



Samsung Neo QLED

With the Neo Quantum processor, Samsung's Neo QLED range offers a clear and immersive experience due to advanced contrast mapping with a back-light unit. The new Shape Adaptive Light technology aids in analysing lines, shapes and surfaces to enhance brightness and accuracy. This range also has a multi-intelligence picture quality algorithm for elevated depth and realism. An EyeComfort mode adjusts the screen's brightness and tone using a built-in light sensor to detect ambient light changes. Sound, too, is improved with Dolby Atmos, with multi-channel speakers tracking the action on the screen throughout the TV.

Panasonic LZ2000

The LZ2000 series is tuned in to Hollywood custom "Master OLED Pro" configuration so that watching your favourite dramas, movies and documentaries in mid-level brightness comes with improved detail accuracy. Its new Game Control Board settings, automatic NVIDIA GPU detection, 60Hz latency and HDMI2.1 support, make it perfect for gaming. Advanced sensors detect the ambient room light colour to deliver comfort viewing at any time of the day. The Auto AI mode also automatically identifies your content and optimises picture and sound quality. Aside from the 55-inch and 65-inch models, the 77-inch model is now available for large home entertainment rooms.



23



LG OLED evo Gallery Edition

Central to LG's OLED evo Gallery Edition's crisp picture quality is its technology. The advanced $\alpha 9$ Gen5 AI Processor powers the AI algorithms for a display brighter than its previous models, along with an all-new Brightness Booster and Self-Lit Pixels. Tech aside, the edition brings you three installation options for the improved design: the cool Gallery Stand, a new Swivel Stand or a super-slim wall-mount that lets it hug the wall more closely than previous models. The G2 series now comes with LG's largest, the 97-inch model, in addition to the 83-, 77-, 65- and 55-inch options.

BEST NEW FINDS



Philips MiniLED TV 75PML9506

A host of features make the MiniLED one of the most anticipated TVs from Philips. Take the P5 processor with AI, which delivers a picture so real "you could step right into it". Or the immersive glow that's emitted from the 4-sided Ambilight to make every onscreen moment feel closer. Gamers will appreciate that its HDMI 2.1 connectivity switches to an ultra-low-latency setting when your console starts playing, with VRR and Freesync for smooth, fast-action gameplay.

DTS Play-Fi lets you connect to any compatible speaker in any room so you won't skip any of the aural action even if you walk away. Dolby Vision and Dolby Atmos complete your cinematic experience right in your living room.



Scan here to find
out more

LG C2 OLED TV

Also featuring the OLED evo panel, the C2 is an update from the LG C series. Among its highlights is its improved high-dynamic range (HDR) performance and brightness compared to its popular C1 range. It also boasts cool gaming-centric features such as 120Hz 4K gaming, variable refresh rate, auto low latency and more. This year, it has also introduced a 42-inch model, making this the smallest LG OLED after its 48-inch model. So, you can now have your OLED TV in smaller spaces with a comfortably sized screen or perhaps end your search for the perfect gaming monitor.





Standing tall

This fully adjustable screen is perfect for work and play – it's wireless so you can use it anywhere, plus it supports a range of streaming devices, apps and accessories.

Make the sleek new LG StanbyME (Model: 27ART10AKPL.ATC) your go-to screen for work and play. With features that include expanded connectivity with Airplay, NFC, HDMI and USB support, you can use it for your favourite video games, host a work presentation, watch movies and more.



You can take this standing screen anywhere by conveniently rolling it to wherever you need it. It also rotates up to 180°, swivels 130° and tilts 50°, and offers a 20cm height adjustment option for comfortable and effortless viewing.

Another great feature is the wireless design. Charge the screen once and trust that the battery

will last for up to three hours – that's enough for a movie, a workout or even a study session.

Stream and watch just about any media you want from the StanbyME, including Netflix, YouTube, Amazon Prime Video and Facebook Watch.

The screen supports Airplay 2, Apple HomeKit, Home-Dashboard, Screen Share and LG ThinQ.



Scan here to find out more

For kids' sake

A clean, secure and healthy home environment is key to your children's development.

TEXT
Michelle Wong



Drink to their health

We're lucky to enjoy clean water straight from the tap. But if you're concerned about excess chlorine, dirt from

pipes, heavy metals and bacterial contaminants making their way into the water your family drinks and cooks with, a water purifier may give you peace of mind.

Water purifiers come in various shapes, sizes and styles. They all work to remove chlorine and contaminating agents, giving you fresh-tasting,

better-smelling water that your children will want to drink more of.

The **Philips On Tap Water Purifier WP3861/00** is compact and easy to install. It features a three-stage filtration system and a silver-coated, active carbon filter that eliminates impurities. Simply turn on the tap and taste the clean water.

Do the robot

Robotic vacuum cleaners are handy when you don't have the time or energy to vacuum or aren't home to clean your floors yourself. Just schedule it to operate whenever you want and leave it to do its job. This autonomous, low-maintenance device picks up dust, dirt and hair, and even navigates awkward spaces such as under tables and chairs – which is good news if your little ones love exploring these tight spots.

The **Samsung Jet Bot Vacuum Cleaner VR30T80313W/SP** is designed to “learn” the layout of your home before cleaning it. You don't have to worry about hair getting caught in its brushes – the device has extractors underneath that grind hairs finely to avoid tangles. You can also remotely schedule it to clean selected rooms or set virtual no-go zones.



Deep clean with steam

Dirt, allergens and bacteria can build up on wall tiles, washbasins, mirrors and other fittings in your home. Wiping these areas down with detergents may get them sparkling clean, but it can also leave behind harmful chemical residue.

Steam cleaning is a more eco-friendly way to sanitise hard surfaces and tricky corners. The pressurised steam kills germs, mould spores and bacteria, and penetrates surfaces to nudge out trapped dirt, grease and stain-causing substances.

The **Karcher Steam Cleaner SC1** uses powerful steam pressure to remove grime and common household bacteria, even in hard-to-reach parts. The handheld device is easy to use and also features a child safety lock.



Breathe better

Did you know that indoor air sometimes contains more pollutants than outdoor air? Thankfully, you can control the quality of the air in your home with an air purifier. This appliance protects sensitive noses and lungs by filtering out odours, smoke, pet dander, pollen, dust, mould spores, germs, and other airborne contaminants that can trigger allergies, exacerbate asthma and weaken the immune system. It also refreshes stale air. Air purifiers are perfect for use while your kids are asleep or studying in their room.

The **Sharp Air Purifier FPJ30E-B** is designed without corners so it's safe to use around children. In Haze Mode, it collects haze particles and sanitises the air.



BEST NEW FINDS

Under your watchful eye

You can't be in multiple places at once, but having an indoor security camera will make you feel like you have eyes everywhere in your home. Besides letting you check in on your kids at all hours of the day and night – while you're away or even if you're in a different room – a “nanny cam” allows you to communicate with your children (and their caretakers).

The **Xiaomi 2K IP Camera BHR4457GL** gives you crisp, detailed images and a higher-quality display, thanks to its fully upgraded 2K ultra-clear HD technology; large aperture; upgraded 6P lens; and enhanced infrared night vision. It also gives you 360-degree pan-tilt-zoom panoramic views so you don't miss any blind spots.



28



Send them to dreamland

Waking up in the middle of the night in a dark room can be scary for some kids. Make bedtime easier and help them fall asleep faster with a nightlight. The soft lighting provides extra comfort as they doze off and alleviates their fears if they wake up from a nightmare or have to get up to use the bathroom. Nightlights are also useful if you're trying to establish a bedtime routine for your tots. The **Masterplug Light GL1/2-MP** fits into any standard power outlet. It offers a soft glow, and is fitted with an LED bulb for low energy consumption and a long lifespan.



U60FW

Cooling down should be a breeze

Enjoy trustworthy safety features with these KDK fans.



Photo: Lifestyle + Interiors

With our hot, humid climate, going home to the cool breeze of reliable ceiling fans is something all of us look forward to.

KDK, a Japanese brand of ceiling fans, is a household name, having sealed its reputation for durability, reliability and superior performance. Locally, Capital Distributors was appointed in 1996 as the exclusive sole distributor for KDK.

KDK's breakthrough 1/f Yuragi function mimics the natural wind fluctuation that one would experience with an ocean breeze. This function actually makes it more relaxing and comfortable for you as opposed to a constant blast of wind. In fact, this kind of rhythm keeps you in a more relaxed state.

The U60FW and U48FP ceiling fans will also allow you to sleep

peacefully. KDK ceiling fans have the world's first Patented Safety Design with a blade safety plate and safety wire that keeps the blades from falling, including a safety switch that automatically cuts off power when any shaft or bolt damage is detected. In addition, each comes with a safety wire that secures the fan motor to the ceiling hook and a thermal safety fuse to protect the motor from power surges.

Both the U60FW and U48FP are pleasing to the eye and will fit any decor aesthetic, coming with stylish, slim 3D blades that silently circulate a consistent strong breeze that covers a wide area.

Both ceiling fans run on DC motors, making them light and compact while delivering greater energy efficiency. They are also silent and lightweight, providing you with



U48FP

the best in class performance.

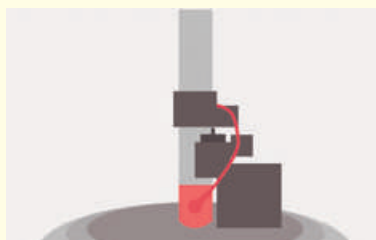
Both ceiling fans come with a handy 9-speed control that includes a sleep mode. When the sleep mode is activated with an on-off timer, the ceiling fan will cycle through all speed settings in sequential order until it turns off, creating an optimal sleeping environment as well as aiding energy saving.

For those who enjoy mood lighting, the U60FW offers three levels of brightness – white, daylight and warm – an array of different lightings to suit your different moods and well-being.

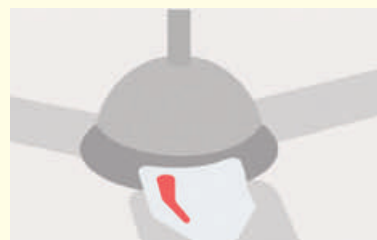
KDK'S PATENTED SAFETY DESIGN:



1 A cut-off safety switch disconnects the motor in the event of a fan mounting failure.



2 A safety wire, made of woven steel, will catch a falling fan hub to prevent damage to the surroundings.



3 A fall prevention plate, mounted on the fan blade, ensures that the blades do not fall off during normal operation.



Scan here to find out more



SAFE

You'll be blown away by our safety guarantee.



U60FW



U48FP



W56WV



T60AW



Our DC ceiling fans use the direct current motor that promises greater energy efficiency. They are also silent and lightweight, providing you with the best in class performance. Equipped with the 1/f Yuragi function, these fans can mimic a rhythmic sea breeze, lulling you to a good night's sleep.

Visit us at kdk.sg | [f](#) KDK Singapore [@kdk.sg](#)



A Game Changer for Home Entertainers

Upscale, craft drinks at home are no longer just for the weekend. Serve up better tasting drinks with LG's slow-melting, round ice-Craft Ice™.

Peace of Mind with Built-in UV LED

UVnano™ technology removes up to 99.99% of bacteria from the water nozzle with UV Light so that you can enjoy fresh and clean water.

Detailed disclaimers apply.

Keep your cool

This new stylish and elegant refrigerator by LG lets you access everything you need, when you need it.

Constantly opening your fridge can leave it struggling to maintain its temperature and may even lead to stale food.

The new LG Side-by-Side refrigerator GS-X5982MC minimises this problem, thanks to its Instaview Door-in-Door™, which lets you see what's inside without opening it, thus reducing the loss of cold air to keep food fresh for longer. Simply knock twice on the tinted glass to reveal the fridge's contents through the wide window. With this model, you'll enjoy 23 per cent more visibility than the previous iteration.

Unlike conventional cooling systems, this model also boasts Door Cooling+™, a unique feature that cools your food and drinks fast – even

items in the door that usually take longer to cool down.

In addition, this model includes a UV LED, which removes 99.99% of bacteria from the water dispenser nozzle every hour so you get clean and fresh water every time.

What's more, you'll impress your friends when they come over, making sophisticated drinks and cocktails using round ice balls made by the fridge – up to six ice balls per day.

Finally, forget about bacteria build-up or odours inside the fridge – the Hygiene Fresh+™ feature eliminates 99.999% of bacteria as well as unpleasant odours.

All this in a sleek and modern appliance that keeps food fresh, and looks great as well.



Scan here to find out more

GET SMART

Safety first

Hazards in the kitchen can happen when you least expect it, so stay vigilant.

Safety rules

A newbie to the kitchen? Here's how to keep cooking hazards to a minimum.

TEXT **Erina Noor**



34

With risks of fire, injury and falls, the kitchen is a potential danger zone in the home. All it could take for accidents to happen is stepping away from your cooking for mere seconds. Read on for tips on using your kitchen and caring for your appliances for maximum safety.



Avoid burns and scalds

Burns and scalds are some of the most common injuries in the kitchen. Most people assume that the oven and hob are hot to the touch. But an often-overlooked area is the microwave oven. An extra minute or two can result in overly hot food. So, don't rush! Handle the plates and bowls carefully when taking them out from the microwave oven. If there is a pot cooking on the hob, be sure to lift the lid away from you to avoid contact with the hot steam.

Check for grease

Open flames can ignite into a fire when they come in contact with the oil and fat in the cooking zone. So, clean your cooker hoods and gas hobs regularly to minimise grease build-up. To remove grease more easily, dampen your cleaning cloth with hot water – be careful not to scald yourself – and mix in a few drops of dishwashing liquid.



Prevent fires from cooking

Fire can also happen from pans that become too hot, resulting in the oil self-igniting. If a fire occurs, avoid pouring water into the cookware. Cover the cookware with a lid or large damp towel instead. For peace of mind, always keep a fire extinguisher in the kitchen.

Don't overload the system

Overheating and fires can occur when power points are overloaded. The typical wall socket in Singapore is the 13 ampere Type G socket. It is meant for electrical appliances and devices that need less than 13 ampere of electrical current. Plug larger appliances such as the refrigerator or those that generate heat such as coffee makers, ovens and kettles directly into the wall socket. And always use appliances with the SAFETY Mark.



35

Use your oven often

The oven can cause a power trip if it is not used often. Why? The heating element can collect moisture over time, increasing the conductivity of the white powder inside the heating element. This could trigger a fire when it's switched on again after it's been left unused for some time. To prevent water from over-accumulating, run the oven at least once a week to allow the heating element to heat up and evaporate any lingering moisture. Leave the oven on for 15 to 20 minutes at a temperature of 150 degrees Celsius.



Watch for superheated water

Superheated water refers to water heated without signs of boiling. When water gets superheated in the microwave oven, any slight movement or disturbance can cause the water to explode out of the cup, leading to severe injuries. To reduce the risk of this dangerous phenomenon, add ingredients such as sugar or any instant mix before heating the water.



Treat your kitchen gently

Cooking a feast? Remember to place heavy pots and pans gently on your hob, especially if it comes with a tempered glass base. Also known as toughened glass, it can shatter if improperly handled. Cycles of heating and cooling during cooking cause expansion and contraction of hairline cracks or even minor scratches. Also, refrain from placing extra unused pots and pans directly on the glass surface – use a trivet instead. Covering the glass top with aluminium foil can also cause damage as it prevents the heat from dissipating.

Other safety tips

1 Kids might run in while you are cooking. Or you might make a sudden turn to attend to something. To prevent spills and scalds, keep pot handles inwards away from the edge when cooking on the hob.

2 When cooking on a gas hob, avoid wearing loose clothes and go for fitting clothes instead. If you have long hair, be sure to tie up your hair, which helps in food safety and hygiene too.

3 Always wipe spills on the floor immediately to prevent slippage and falls.



4 Never cut anything in your hand. Use a chopping board when handling knives, and make sure surfaces are dry and non-slip.



Practise safe dishwasher habits

For busy families, the dishwasher is a lifesaver. Dishwashers use steam to remove stubborn food scraps and leave your dishes sparkling clean. However, the steam can cause injuries as serious as those caused by open flames from the oven, especially if the dishwasher is opened mid-cycle. Also, be mindful when washing knives and other sharp tools as they may lead to injury during unloading. Overloading your dishwasher can also cause breakage of tableware.





Make cooking at home healthier

The new Brandt oven range combines classic cooking with steam for healthy and tasty results.

Leading French home appliance company Brandt has a new range of ovens that cooks and bakes your favourite dishes the traditional way, but with the added benefit of steam cooking.

Steaming helps to preserve the nutritional value of food and keeps meat, poultry, seafood, desserts and veggies moist and flavourful. Brandt's 60cm Pyrolytic Oven offers three modes of steam assisted cooking functions – White Meat, Fish and Poultry – so you can prepare juicy roast chicken, turkey or duck, succulent fish, perfectly

tender vegetables, and even a decadent chocolate lava cake with a soft molten centre. Simply add sufficient lukewarm water to your drip pan, place it in your oven on the bottom shelf and let the steam do its work.

As the steam circulates during the cooking process, you can be confident that what you're making will cook quickly without drying out or losing its nutrients.

The oven, which is available in two colours (Black BOP7537BB



BOP7537BB

and Stainless Steel BOP7537X), also features two pyrolytic cleaning cycles – Clean 39, a self-cleaning function that cleans the oven in just 39 minutes, and the 2hr Pyrolytic Cleaning Mode.



Scan here to find out more

Our Products
are built with
great love, care
and attention
to detail.

AN ASSOCIATION OF SINGAPORE BRANDS
新加坡金字品牌獎
Singapore
Prestige
Brand Award 10
Winner, SPBA - Heritage Brands



DALTON
STORAGE WATER HEATER



10 Year
Warranty
on Tank



2 Year
Warranty
on Parts



2 Year
Warranty
on Service



Blue Enamel
Coated Tank



Blue Enamel
Coated Heating
Element



KINGSTON
INSTANT WATER HEATER



Copper
Class Tank



Inverter
DC Booster
Pump



Earth Leakage
Sensing
Device



Giving the best we can through
knowledge and understanding
707.com.sg

707® My
Family
Heater

Let heat flow

**A warm shower after
a long day is an easily
affordable luxury with
the right water heater. All
it takes is deciding what
works best for your home.**

Instant heaters are suitable for compact spaces and are highly energy efficient. The 707 Kingston packs a punch with its Inverter DC Booster Pump, which, as its name suggests, helps boost low water pressure. What's also great about this heater is its safety system, thoughtfully constructed with smart features for your piece of mind. These include an Earth Leakage Sensing Device, which shuts off the power supply upon detecting current

leakage, and double-safety anti-scalding protection to prevent burns.

Another standout feature is its Stepless Power Selector, which allows precise control over the water temperature. Plus, the heating element is highly conducive to heat, which makes for reliable and lasting performance. Paired with its 11-inch-wide HydroSpa Ace Rain Shower Set, an unconventional feature for instant water heaters, the 707 Kingston promises a truly relaxing shower experience from start to finish.

Larger households can opt for storage water heaters. The Dalton is an excellent choice with its 15-litre and 25-litre offerings. Beneath its modest exterior is a reliable heating unit equipped with smart functions to increase heat efficiency and energy savings. Durability is a given, thanks to the Blue Enamel coated



Dalton 15



**707 Kingston
Piano Black**

tank and heating elements.

Plus, its compact design enables even more space efficiency for easy installation and maintenance, a bonus for snug dwellings.

Both the 707 Kingston and Dalton come with 5-year and 10-year warranties respectively, as well as 2-year warranties for servicing and spare parts.



Scan here to find
out more

acerpure

Breath of Fresh Air, with Powerful Airflow

NEW

Acerpure Cool C2 Smart 2-in-1 Air Circulator and Purifier



Air Circulator
and Purifier 2-in-1



Smart App
Acerpure Life



Four-Layer
Protection



NEW

Acerpure Cozy F1 Air Circulator



Energy-Saving with
High-Efficiency



Precisely Control
Your Airflow



15m Powerful
Airflow



Breathe easy with Acer

**Air circulators and
purifiers to protect
your home.**

Acer's 2 in 1 Smart Air Circulator and Purifier combines the best of both worlds, by integrating "Smart" and "Freshness" into the perfect technology for any home. The 2 in 1 Smart Air Circulator and Purifier comes with a HEPA Plus+ Filter that protects your home from 99.9% of viruses and bacteria. It also fills the air with a high concentration of negative ions to get rid of pesky dust and PM1.0 particles.



C2

F1

The 2 in 1 Smart Air Circulator and Purifier, when combined with the acerpure Life app, gives you useful insight into your indoor air quality and offers you the ease of control over your air circulator's functions even when you are not at home.

Acer's Air Circulator innovates with its turbine blade fan, creating a powerful 3D airflow when combined with the spiral flow guard, spanning a distance of 15 metres, to maximise your home comfort.

Not only is the Air Circulator quiet – said to be softer than a quiet library – its full-function remote control is also convenient and hassle-free.

Both the 2 in 1 Smart Air Circulator and Purifier and Air Circulator come with DC motors, delivering high-quality air circulation at very low electrical costs.



Scan here to find
out more

Smart changes for **BIG** savings

Practical ways
to save energy,
reduce your
electricity bills and
do good for the
world.

TEXT Airis Abdullah

There's been much in the news recently about electricity costs creeping up. The bad news is experts anticipate these costs to rise in the future. So it's now more important than ever to choose options and adopt solutions that aid in saving energy at home so as to lower household bills in the long run. That said, the key to an energy-saving home is setting it up to conserve as much energy as possible without you having to do extra on a day-to-day basis. Here's how you can do it.



Opt for LED lights

When buying lights, go for energy-efficient options such as LED bulbs. To produce the same amount of light, LED bulbs use up to 85 per cent less electricity than incandescent light bulbs. On top of the electricity cost savings, LED bulbs last much longer than conventional bulbs.



Check the ticks

From 2022, the National Environment Agency (NEA) will raise the minimum energy performance standards (MEPS) for refrigerators, clothes dryers, casement and window air-conditioners, and split-type air-conditioners. With these enhanced standards, you will be getting more energy-efficient appliances that reduce energy consumption and carbon emissions. With the Mandatory Energy Labelling Scheme (MELS), you can make informed choices by comparing the energy efficiency of appliances. The maximum, five ticks, means the most efficient. Note that there may be more upfront costs for those with more ticks. However, you could benefit from more long-term savings.



Clean and service

Keeping your appliances and electronics clear of accumulated dust and lint ensures no blockages for maximum efficiency. If you regularly do so but notice them making more noise than usual, it may be time to send your appliances for servicing. Signs of wear and tear often mean that your appliances might be working harder than before.

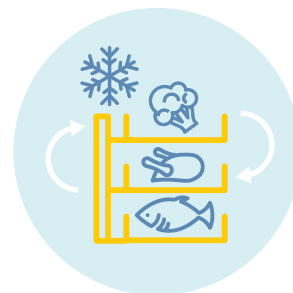


Rightsize your appliances

When buying appliances, be sure to get the most appropriate size for your space and needs. A large fridge might look good, but if it is too big for your needs, you'll be spending more on energy just to keep it running.

Timely upgrades

Another way to get the most savings in energy is to upgrade your appliances and electronics when the technology changes. Televisions, washing machines and refrigerators, for example, are constantly evolving. New models come with updated features that reduce energy consumption and care for your clothes and food better, thereby protecting the planet.



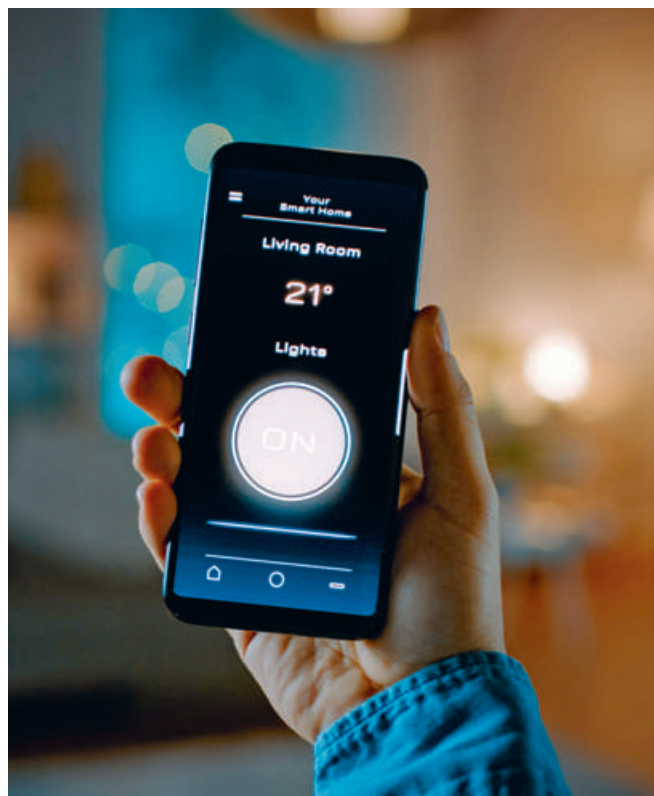
Load them optimally

Keeping your refrigerator full provides less room for warm air to slip in when you open the door. But keeping it over-filled can be detrimental as the cold air needs to circulate effectively. Likewise, washing a full load of laundry saves energy and water in the long run, but overloading your washing machine stresses your machine over time as well.



No more phantom loads

Some appliances or electronics continue to consume electricity even after they are turned off. These silent energy vampires can lead to a significant phantom load over time simply because they are on stand-by mode all day and night. And they could account for up to 10 per cent of your electricity bill. Entertainment systems, which include televisions, set-top boxes, audio systems, phone and device chargers, laptops and computers, modems and video game systems are often the biggest culprits. To get rid of phantom load, make it a point to switch them off at the power socket after use.



Get smart

Going around the house to switch things off can be tedious. Smart plugs or power strips are helpful tools to tackle phantom loads if you're not ready to invest in a smart home system. While they also run on standby, smart plugs can help you save energy without hassle. You can switch them off from your phone or set a timer to automate the process.



Cool wisely

In this scorching climate, the air-conditioner is a lifesaver that keeps many of us functioning well during the day and sleeping soundly at night. To minimise energy wastage, however, ensure that the temperature is set at around 25 degrees Celsius. You'll enjoy more savings if you can set it a degree or two higher.

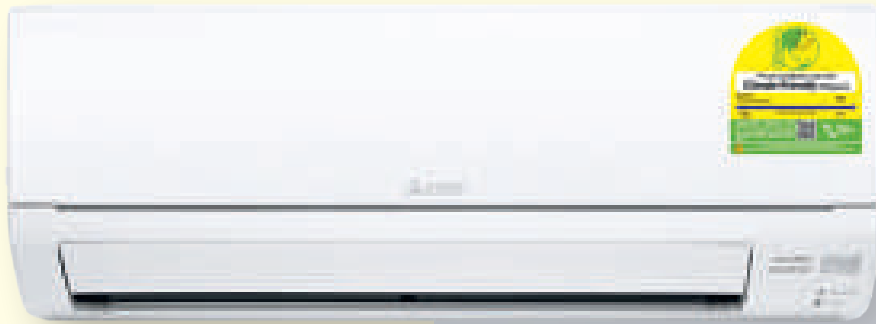
Yay for off peak periods

Are you a night owl or an early bird? Consider using your washer and dryer at night to enjoy off-peak electricity rates. From 11pm to 7am, you can enjoy significant savings off your electricity costs. Some appliances connect to an app so that you can schedule your laundry.



Consider the life cycle cost

Look at the life cycle cost, too, which consists of the purchase price and the estimated electricity cost over a seven-year lifespan. You can do so easily with the Life Cycle Cost Calculator on www.e2singapore.gov.sg, which lists the popular models of air-conditioners, refrigerators, clothes dryers, televisions and lights.



A cool change

The Mitsubishi Electric Starmex R32 range of air-con units offers powerful cooling while using less energy and reducing your environment impact.

If you're looking to replace the room air-con units in your home, consider the Mitsubishi Electric Starmex R32 series.

This series uses a new refrigerant called R32, which has a GWP (Global Warming Potential) of 677. This is two-thirds less than its predecessor, the refrigerant R410A, which has a GWP of 2,088.

R32 is not new – it's currently used in the blended R410A refrigerant, which is a mix of R32 and R125. As well as offering a low GWP, R32 is a single component refrigerant, meaning that it has a zero-ozone depleting potential and is easier to recycle. Being a higher efficiency refrigerant, the R32 system also uses approximately 20 per cent less refrigerant than its predecessor, thus helping to lower energy bills and reduce carbon emissions.

Why make the change now? In March 2020, the National Environment Agency (NEA) introduced mitigation measures to

reduce Singapore's greenhouse gas emissions arising from the use of hydrofluorocarbons (HFCs) in the refrigeration and air-conditioning (RAC) sector.

HFCs are commonly used as refrigerants in RAC equipment. When emitted into the environment, they are many times more potent than carbon dioxide in contributing to global warming. The mitigation measures introduced by NEA strive to reduce

Singapore's consumption of HFCs. From October 2022, it will be restricting the supply of household air-conditioners that use refrigerants with a GWP above 750.

The Mitsubishi Electric Starmex R32 series is well-designed, sleek, and cools your rooms powerfully, quickly and efficiently. The air-con units are also easy to maintain, ensuring that the air circulating inside your home is always healthy and clean.



Scan here to find out more

Elevate your showering ritual



SINGAPORE
GOOD
DESIGN
2019



Cutting-edge, cost-efficient,
comfortable and chic, this smart water
heater checks off your #BathroomGoals.

With ever-rising utility bills, there is no better time to audit your energy and water usage. After all, almost 30 per cent of our water usage is consumed while showering, according to the Public Utilities Board (PUB); and water heaters contributed to more than 20 per cent of our electricity bill, according to a survey by Energy Efficient Singapore.

SLASH UTILITY BILLS

The good news is: For the first time, you can track your water and electricity usage in real time with Trentios Smart Water Heater. Its smart shower technology even allows you to set a water limit per shower, with a blinking indication to remind you when you are approaching the limit.

By showering smarter, you will not only lower your electricity and water bills for substantial savings over time; you will also reduce your carbon footprint and do your part for the environment.

SPA-LIKE SHOWER EXPERIENCE

Practical considerations aside, daily showers are important unwinding rituals. This water heater is designed to elevate the experience and indulge your senses.

A double heating element heats up water twice as fast without consuming more electricity, and an anti-scald protection mechanism prevents water from going beyond the optimal temperature of 55 degrees Celsius. In other words, you won't have to put up with freezing or scalding jets ever again. In fact, the proprietary showerhead even delivers Jacuzzi-like pressure to melt away stress with each shower.

A bathroom essential designed to last with a 10-year warranty on the heating element – one of the longest in the market – Trentios Smart Water Heater is one of the best home and self-care investments you can make.



Our customers loved it..

"I am glad I purchased the Trentios water heater. The touch sensor is safer than the conventional types and the water consumption meter makes me more conscious of my water usage." - **Mohamed Haja**

"I love this water heater as it shows how much litres of water I used after bathing and hence it helps me to save the water bills." - **Jai Prakash**

"Reasonably priced, good, fast and efficient workmanship of plumbing. The children are very excited to see the amount of water they used at every shower which encourages them to save water...rain shower makes it feel luxurious." - **Hazlinah**

Benefits



MAXIMISING WATER EFFICIENCY

Able to set water limit and track usage. Proprietary showerhead design maximises spray area with optimal water pressure.



TOUCH SCREEN INTERFACE

Designed for quick interactions even in wet condition.



DOUBLE HEATING ELEMENT

Dual-element design heats up water twice as fast without consuming more electricity.



STAINLESS STEEL WATER TANK

Non-corrosive, ensuring long product lifespan.



Scan here to find out more

Never
lock
yourself
out
again



Say goodbye to fumbling for keys, replacing locksets and the frustration of being locked out of your home or office. These digital locks will give you peace of mind and make your life easier.

TEXT
Sasha Gonzales

Futuristic focus

Samsung Push Pull Digital Lock SHP-DP728-Gold W

If you like keeping abreast of the latest tech trends, this model is perfect for you. The world's first push-pull door lock, it comes with advanced unlock authentication methods, like Bluetooth, Fingerprint, RFID card and Passcode, to unlock your door. Use your SHome mobile app to unlock your door and get real-time push notifications when people go in and out of your property. Other smart functions include a user-friendly instruction display, instant silent mode for quiet entry and exit, and automatic wakeup when the IR Sensor detects motion. This model has a two-year local warranty and lifetime technical support.

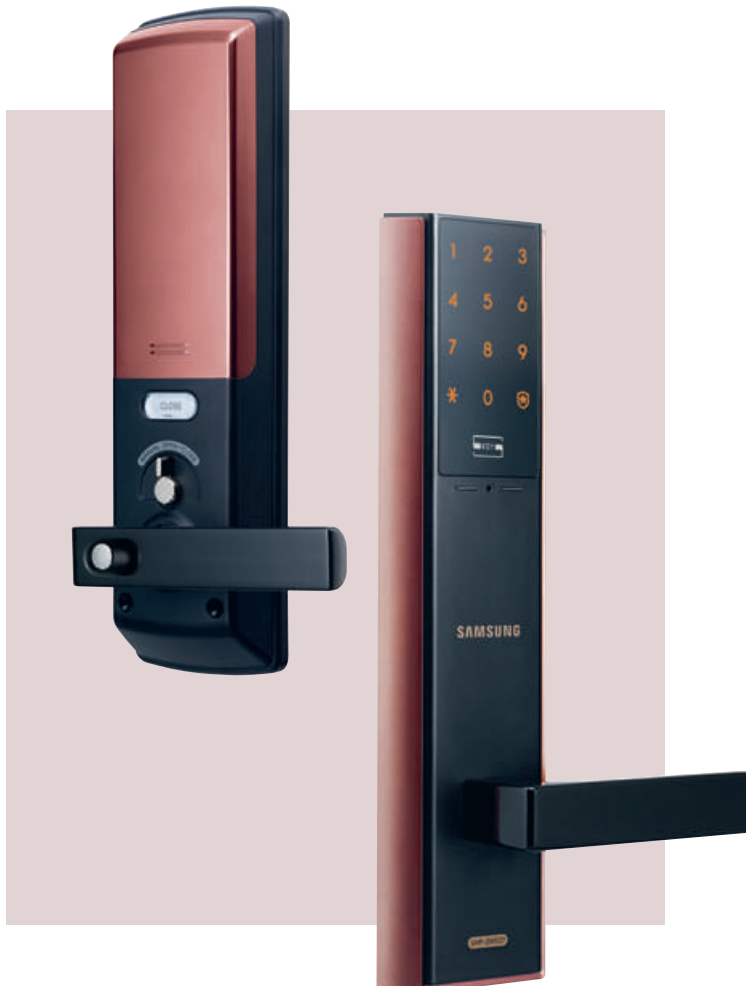


Just as you open your car door, you can easily open the door by pulling it or by pushing it.

Leave your worries behind

Samsung Deadbolt Digital Lock SHP-DS510


You don't have to worry about whether you locked your door behind you because this model has an auto-locking feature that does it for you. Plus, if the batteries run out before you have the time to replace them, you can use the emergency key to open the door from the outside. Concerned about onlookers guessing your PIN code? The Random Security Code feature throws off onlookers and spreads your fingerprint marks, so your doorlock is extra secure.



A stylish pick

Samsung Mortise Digital Lock SHP-DH537-Dark Brown

This chic-looking digital lock keeps your home secure, with the dark brown and black design combo giving your door a modern, fashionable touch. This model boasts automatic locking function and offers keyless entry for up to 100 users, either using a PIN code or an RFID key tag. It uses four AA-sized batteries and has a long battery life – a minimum of 12 months over 10 entries per day – as well as two mechanical backup keys. This model can be installed on a 40-60mm-thick door with a minimum 115mm lock stile.



Practical and flexible

igloohome Digital Lock igloohome Mortise

Unlock your door with various modes of entry – a PIN code, key card or Bluetooth key on your smartphone – for ease and flexibility of access. Using the igloohome mobile app, you can create PIN codes or Bluetooth keys and select how long you'd like them to be valid for, and even send them to visitors from the app. You can also track the dates and times at which people enter and leave your home. With this lock, you don't need the internet either, as it uses encryption and synchronisation. This means you're less vulnerable to Wi-Fi hacking. This model uses four AA batteries.

Simple but innovative

Igloohome Smart Lock Deadbolt 2S Metal Grey

While minimalist in looks, this lock packs a host of substantive features. Use PIN codes and Bluetooth keys to unlock the deadbolt (you can even customise them to be time-sensitive in case you have guests staying in your home). It also comes with physical backup keys so you'll never lock yourself out. The deadbolt does not need an Internet connection to work, thus increasing its reliability and security against Wi-Fi hacking. This model has a sleek, universal design that suits most modern homes; the front panel is 11mm thick and sits above your door knob or handle.



Scan here to find out more

igloohome

LATEST DIGITAL DOOR LOCK WITH MOBILE APP

SAMSUNG
Smart Lock



*Grant access remotely to your guests
by sharing a private token*



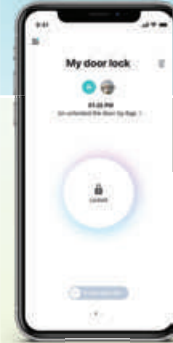
Manage and
control your
lock easily



Issue temporary
PINs to your
guests



View and
monitor your
lock activity



Available Silver, c/w 5 override keys

SHP-DP609

IGR1 (PUSH PULL)

- No connection required between your phone and lock
- Patented AlgoPIN™ Technology



Push Notifications
Remote Unlock via App
View Door Access Event Log
Issue One-Time and Temporary PIN

Hanman
www.SamsungDigitalLife.com

2 Jurong East Street 21, #03-157
IMM Building, Singapore 609601
Tel: (65) 6564 4704

Keyless access

Digital door locks from igloohome and Samsung offer a world of convenience.

Constantly forgetting where you put your house keys? Make entering your home a fuss-free process with these smart locks. The igloohome Push Pull Mortise works together with the igloohome Bluetooth mobile app, making it easy to manage access to your property anytime, anywhere. Additionally, the app's large memory capacity makes storing access credentials a breeze.

With igloohome's unique AlgoPIN™ technology, the smart lock works offline, making it easy



igloohome
Push Pull
Mortise

for users to generate Bluetooth keys or private tokens remotely, allowing grocery and other deliveries when you can't be home to receive them. Its sleek push-pull design removes the additional step of having to turn knobs or handles, making entering your home easy when you are laden with multiple bags.



Samsung
SHP-DP609

The Samsung SHP-DP609 and SHP-DR708 door locks let you leave home with peace of mind as you can always activate the 2FA (two factor authentication) for a more secure access, to allow unlocking only with a passcode and fingerprint scan. Both models are armed with an auto-locking feature, a convenient way to eliminate the need to lock your door manually while also keeping your home safe.

These innovative smart door locks even make protecting your home a hassle-free process. By connecting to your home's Wi-Fi router directly, the mobile app allows you to remotely unlock your lock or program a one-time password for temporary access. It also allows you to manage access credentials with ease, notifying you when somebody presses the doorbell.



Scan here to find out more



Trusted expertise

As one of the pioneers and a renowned brand name in the air-conditioning industry, Fujitsu Air Conditioners has come a long way since its inception in 1960.



From wall-mounted units to cassette types, ducted types and suspended types, Fujitsu Air Conditioners offers a variety of air-con systems for both residential and commercial establishments. Amassing more than 20 years of experience, it has built a robust network through its own R&D department and many manufacturing factories across the globe.

Having established a strong presence in Singapore, Fujitsu Air Conditioners is supported by an experienced team under the sole distribution of Winfinity Singapore Pte Ltd.

With many technological advancements, Fujitsu Air

Conditioners presents its latest air-conditioning model, the Pearl Series which boasts a 5-tick NEA energy efficiency label rating. This high energy-saving unit is equipped with a human sensor feature which detects human activity in the room. It switches to energy-saving mode when there is a lack of movement.

STRONG & SILENT AIRFLOW

A large 107 diameter fan delivers high and efficient air delivery, which cools the room down effectively. That also means high airflow coverage at low power. Adding to the strong airflow is its big louver and a new airflow structure for a more comfortable breeze. Operating in quiet efficiency, the long reach airflow further increases airflow coverage. Boosting its performance are air-con filters which promote efficient filtration and a DC Twin Rotary Compressor.

SLEEK & SENSIBLE DESIGN

Having clinched the Red Dot design award in Japan, the Pearl Series showcases elegance with its unique

matte pearl colour finish. It is also compact in size and spans only 270mm in height, and 215mm in depth. The slim and sleek details can be achieved through its high-density multi-path heat exchanger and highly-efficient wind blower. In terms of maintenance, it's a straightforward process to clean the unit via its new structure features. It only takes three simple steps to remove the PCB and the water tray which reduces the maintenance time by 50 percent.

ADDED CONVENIENCE

With the ability to control the Pearl air-conditioner unit through your smartphone, this opens up more possibilities to maximise the usage of your air-conditioner. Forgot to turn off your air-con after leaving home? Just use the smartphone application with your mobile device to switch it off. You can even turn it on before you reach home and set the fan speed, louver position, temperature and access more features via this thoughtfully-designed app. This WiFi function is optional.

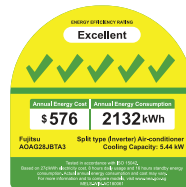


Scan here to find out more

FUJITSU



THE INTELLIGENT CHOICE IN COMFORT



Sole Agent:

WINfinity

Winfinity (S'pore) Pte Ltd

19 Greenwich Drive, #03-00 Kerry Logistics Centre-Tampines, Singapore 534021
Tel: 6844 2220 Fax: 6844 2221 www.winfinit.com.sg



Clear the air

With the latest air-conditioners from Mitsubishi Heavy Industries, you can cool your home while MHI's Allergen Clear Filter inactivates SARS-CoV-2 particles.

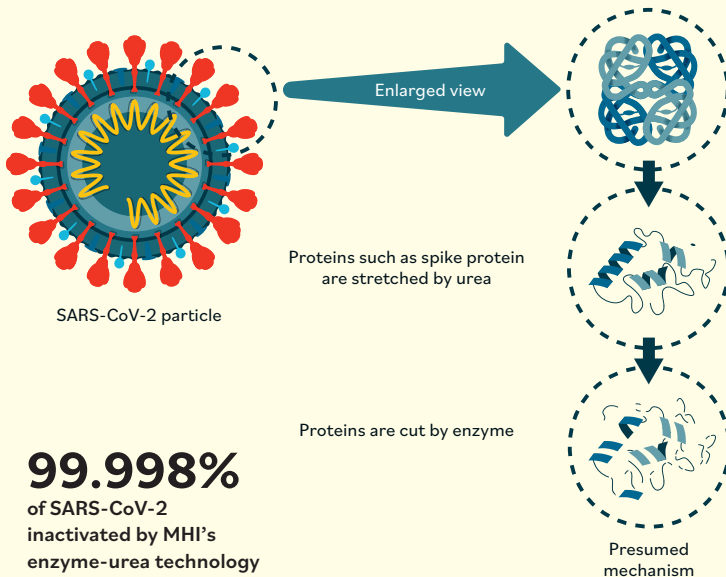
Your air-conditioning system cools your home, but did you know that it can also filter out harmful allergens and viruses? The latest air-conditioners from Mitsubishi Heavy Industries (MHI) feature the Allergen Clear Filter, designed to improve air quality. The filter captures a range of germs, allergens and viruses associated with serious health complications. This technology suppresses harmful particles, thanks to the use of an enzyme-urea compound.

TECHNOLOGY THAT PROTECTS

New research from MHI confirmed that the Allergen Clear Filter's unique air purification technology is effective at inactivating SARS-CoV-2, the virus that causes COVID-19. Researchers at the Japan Textile Products Quality and Technology Center (Q-TEC) inoculated the air purification filter with a viral fluid containing SARS-CoV-2 and left it to rest at 35°C. One hour later, the virus was found to have been rendered 99.998% inactive.

The Allergen Clear filter is available as an optional item and can be purchased for \$15 per piece at KM Marketing Pte Ltd. It is compatible for use with most wall-mounted FCU models currently on sale.

MHI has also introduced its Diamond series of air-conditioning units with several key features, including quiet and long reach airflow, thanks to Jet Air Technology; 3D Auto Technology Vertical and Horizontal, which enables airflow in eight directions for faster and more effective cooling; Clean Air Technology, to inactivate allergens; Fuzzy Auto Operation, to help save energy; and Comfort and Convenience, which allows for high-power operation and silent operation.



Scan here to find out more

COOL STUFF

Breezy comfort

Smart tips to cut air-conditioning energy bills and more.

53

DID YOU KNOW?

- Cooler temperatures boost your brain power.
- You'll sleep better in a cooler room.
- The human immune system may be activated when exposed to the cold.

The secret to an efficient air-conditioning unit is to give it proper care. Maintaining and servicing it regularly prevents breakdowns and ensures it works at its best, which in turn helps you to save on your electricity bills.

1 Keep it clean

Air-conditioning coils

assist the refrigerant to absorb heat and cool the room. These coils too need cleaning because they tend to become covered with dust particles. This reduces their ability to absorb heat and makes the air-conditioning unit work harder to maintain the room's temperature.

TIP Ensure coils are cleaned regularly, but this job must be done by a professional. Coils are sharp and can cause injury if one is untrained. Furthermore, attempting to clean the condenser coils yourself could void the warranty, damage components or cause the refrigerant gas to leak into the atmosphere.

Clogged vents trap the air in the ducts and strain the air-conditioner as it struggles to push the air out through blocked vents.

TIP Hire a professional to routinely clean the vents.

Dirty air ducts can reduce air flow and make it harder for cold air to pass through. Leaky ducts also strain air-conditioners by causing air to escape. Furthermore, leaks in the hose may cause the unit to break down.

TIP Regularly clean air ducts at least once a year to reduce the amount of dust. In the case of leaks, insulate and seal ducts to prevent the air from escaping. Also check for hose leaks annually.

Air filters stop dirt and dust particles from entering a room. If the air filter is dirty, it will excessively strain the air-conditioner and also impact the air quality in the room. Cleaning the air-conditioner gets it to work at its best. Alternatively, filters can also be changed frequently to improve the unit's overall efficiency.

TIP Users themselves can easily clean air filters regularly. But before doing so, read the manual about how to access and clean them. More importantly, ensure that the air-conditioner is switched off at the main. Then after removing the filters, take them outside to shake off excess dirt and dust. Use a small soft brush or a vacuum cleaner's soft brush head to clean them further.



Get more mileage out of your air-conditioner

If treated well, your air-conditioner will stay with you for a long time. Follow our 7-point guide to extend the life of your unit.

TEXT
Sol E Solomon

2 Ensure air circulation

To efficiently pump cold air in, an air-conditioner needs proper airflow. So it is necessary to ensure that the air is flowing smoothly. Blocking the airflow strains the unit, making it work harder.

TIP Clear obstructions including debris, furniture and curtains from the air vents.



3 Service is key

Ensure that the air-conditioner is regularly maintained to extend its lifespan. Sometimes small problems in air-conditioners can become major faults quickly if they are not prevented early. Regular tune-ups ensure peak performance and can prevent problems from happening.

TIP Schedule an annual check-up for the system. Having preventive maintenance services yearly keeps you proactively ahead of potential large problems.

Gain City provides air-con servicing for both residential and commercial premises at reasonable rates. Call us for a quote today!



4

Let it rest

Like humans, air-conditioners perform better if they can get occasional breaks. Leaving the unit running constantly wears it out quicker.

TIP Work out the most feasible time to give your air-conditioner some rest. If you leave home for a length of time, say during the work day, switch off the air-conditioner while you are away.

5

Be smart

Smart thermostats let you pre-programme your air-conditioning system. This way the air-conditioner automatically turns off when you do not need it, so it can rest. And when you are on the way back from work, the air-conditioner automatically starts, so you'll come home to a cool house.

TIP This reduces the amount of time the unit operates, thus increasing its life expectancy.



7

Chemical wash

The entire air-conditioner is washed with special chemicals to remove accumulated dirt or impurities in the unit. All parts are also rinsed with chemical solvents. Chemical washing improves the air as well as the system's operation and cooling efficiency, reduces the probability of system damage, solves leakages, and gets rid of dirt, fungus and bacteria.

TIP Use qualified air-conditioner chemical cleaning contractors as they have extensive experience, and the latest chemicals and tools to do the job. Using the correct chemicals is very important as these chemicals are able to thoroughly wash all dirt and bacteria without affecting the unit's components.



6

Get repairs done by professionals

An air-conditioning unit that operates with a malfunction for a long time would potentially experience additional strain. This in turn decreases its overall health and performance. Air-conditioners have complicated parts, and some repairs require dismantling and disassembling of the indoor fan coil parts, which only trained and competent technicians can do. Special air-conditioning tools are also required for such works.

TIP Trained technicians can also recommend preventive repair works and rectify potential issues before the air-conditioner breaks down.



A safer environment with better indoor air quality and energy efficiency. **For you and your loved ones.**



INSTALL IT. TRUST IT.

ArmaFlex® insulation system

www.armacell.com.sg

 **armacell**
ArmaFlex®

Slash your air-con bill

A high-performance insulation system conserves energy and creates a more comfortable home.

Air-conditioners are considered necessary luxuries in modern homes, but they are also known to be energy guzzlers. One secret to slashing electricity bills: invest in good and reliable insulation.

Did you know that poor insulation products result in condensation, which affects insulation performance and increases energy consumption? Indeed, 98 per cent of insulation failures are moisture-related. Moreover, since most air-con pipework is installed in trunking



or false ceilings, it can be costly to rectify bad insulation systems.

So it pays to invest in a good insulation system from the get-go. Engineered by global leader Armacell, the ArmaFlex® insulation system consists of three products to enhance condensation control, reduce heat loss and significantly



ArmaFlex Shield CX



ArmaFlex Class 0

conserve energy in tropical climates.

Sophisticated and durable, the ArmaFlex Shield CX which connects the outdoor compressor unit to the indoor piping system is humidity- and UV-resistant. The seventh generation signature ArmaFlex Class 0 conforms to Singapore's Fire Safety and Shelter Department requirements for building products, and the ArmaFlex 520 adhesive ensures seamless end-to-end installation. Together, they optimise your air-conditioner for more comfort. Energy savings can also add up to a tidy fortune over time.



Scan here to find out more

Bringing the outdoors in

No garden? No problem. Feel like you're out in nature with these tips.

TEXT Michelle Wong

Fill your home with flowers and plants

Turn your space into a green sanctuary with potted plants and fresh flowers. Studies show that when plants release their moisture into the air, it can help bring the temperature of the room down. So place them by windows and doors, in corners, and on tables and dressers. Plants like succulents, the snake plant, the Chinese money plant, orchids, monstera and ferns are low-maintenance and thrive indoors. Potted herbs on your kitchen counter are also ideal, and if you have a bare wall, decorate it with hanging plants or even create a "green wall".

58

Spending time in nature is good for your emotional well-being and a great way to destress. If you can't be outside, however, or if you don't have a garden, try these easy decorating ideas to transform your living space into a peaceful, outdoor-like oasis.

Incorporate a water feature

If you're soothed by the sounds of a flowing stream or falling rain, install a small water feature in your living room, bathroom or bedroom. A decorative tabletop water fountain, an indoor cascading waterfall and even an aquarium are some easy ways to channel the tranquillity.



Photos: iStock



Let the light in

Homes that receive plenty of natural light are brighter, and feel cheerier and more open. They may also appear bigger. Let more sunlight in by dressing your windows with lightweight sheer curtains or by hanging a mirror opposite a window to reflect the light coming in. Another idea is to use a light colour palette for your walls. Soft shades like cream, pale grey and pastel blue help reflect the natural light entering the room. Swapping your dark wood furniture for pale wood pieces may also help.

Add natural elements

Introduce items made from organic and natural materials, like jute rugs, rattan chairs, earthy clay tiles, wicker pendant lamps, stone ornaments, seashells and woven grass baskets. Besides being eco-friendly and more long-lasting than their manmade counterparts, these items bring the emotionally healing properties of nature into your home. For extra garden-like vibes, burn woody incense sticks or use an aroma diffuser with a fresh, nature-inspired scent like rainforest or eucalyptus.



Try botanical design elements

Bold floral and botanical designs are a huge trend in 2022, so jump on the bandwagon with leaf-patterned or floral-embossed wallpaper, framed botanical prints, and floral-printed cushions and curtains.

Bring the farm home

Grow and harvest your own veggies and herbs at home with this eco-friendly indoor “farm”.

TEXT Michelle Wong

60

Singapore is heavily reliant on the world for its food needs. In fact, more than 90 per cent of our food is imported. But, what if something were to happen to our food supply? What the Covid pandemic has shown is that we can't afford to take food security for granted.

Singapore aims to meet 30 per cent of its nutritional needs through locally produced food by 2030, and the Indoor Smart Eco Farm, now retailed at Gain City, was created to help with this goal.

Measuring 1.7m in height, 77cm in length and 44cm in width, this mini



An all-new product retailed at Gain City, scan here to find out more:



Photo: iStock

farm can produce up to 50kg of vegetables per year, without the use of pesticides, herbicides or sunlight, and while occupying a space of just 0.3 square metres.

Urban farming in your living space

The system uses a hydroponic growing technique, where a small, shallow stream of nutrient-rich water is recirculated over the roots through a channel, gutter or tube that requires a pump. This helps the vegetables thrive and gives new seeds full access to water. When the circulation phase ends, the solution flows back to the reservoir, creating moist but

breathable conditions for seed germination and root formation. The system was specially designed to prevent mosquito and insect breeding.

This eco-friendly farm can be placed anywhere – in your kitchen, by your dining table and even in the office – so you can pick your own fresh vegetables anytime. Being able to harvest the exact amount you need, when you need it, reduces food waste and saves you a trip to the market. It also eliminates the likelihood of nutrient loss and packaging damage – two problems associated with food that had to travel some way to get to you. It's as local as it gets.

Our Product

- Automated LED lights ON/OFF settings
- Auto irrigation ON/OFF settings
- Touch Screen Functions
- 40 litres of water capacity with built-in water level sensor
- Concealed water tubes
- 4 tiers of 18 pods each level (total of 72 pods for 4 layers)
- Germination layer of 85 pods
- Body structure made of high-quality Food Grade plastics
- Sleek and modern design

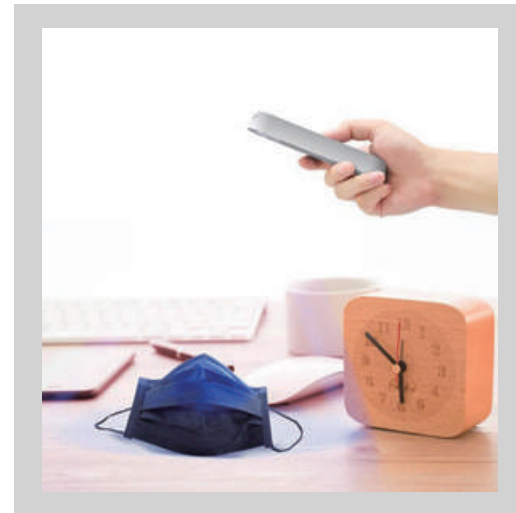


Dimension: 1700mm(H) 770mm (L) 400mm (W)

Grow more in less space

Only a small area of 0.3m² require with more than 20 species of plants and herbs to be grown selectively. Lesser labor is required and conserve huge amount of water.

World first portable UV-C sterilizer with 99.9% effectiveness in killing germs and bacteria; and inactivating viruses in under 120 seconds



website: www.singrass.sg

Facebook: Singrass Sg Instagram: singrass_sg

Green house

Check out these smart, eco-friendly solutions for your home.



Indoor Smart Eco Farm

Improve your indoor environment naturally with two new products from local company M Grass International.

With the Smart Eco Farm, it's like having a field of fresh vegetables at your fingertips. Measuring 770mm long, 400mm wide and 1700mm high, the modular unit takes up a mere 0.3 square metres of space, so you can place it anywhere, such as your kitchen or office, and even by your dining table.

Made from high-strength food-grade PP plastics and weighing just 30kg, the Smart Eco Farm produces vegetables, herbs and spices, without pesticides. As they grow, the vegetables release oxygen and absorb carbon dioxide, thus improving the indoor air quality. The lush green crop also beautifies your indoor environment and helps lift your mood.

The company's other product, the Smart Toilet Steriliser is perfect for disinfecting toilets without



harmful chemical cleaning agents. Using ultraviolet-C LED lights, the steriliser kills bacteria, germs and the coronavirus, as well as disinfects surfaces. The built-in infrared induction sensor ensures that the device is always used safely. The service life-span of the device is five years, and it can be used for 10 to 14 days per charge for two hours. Compact and portable, the Smart Toilet Steriliser can be used in any toilet.



Scan here to find out more

Because we love our furkids...

Pets offer comfort and companionship, and they deserve the best in care too.

TEXT Erina Noor



Keep them safe

Spending long hours at the office but worried about your pet? With the Pan/Tilt Home Security Wi-Fi Camera from TP Link, you can care for your pet at any time of the day. This ultra-high definition security camera offers live view and even two-way audio. That way, you can hear your furbabies, and soothe them during thunderstorms if you're not home.



Pets eat healthy too!

Store-bought pet food typically contains additives that could upset your furkids' stomach. So why not prepare homemade treats? All you need is a dehydrator to have control over the ingredients while also saving money on treats. Make a big batch with the Cornell Food Dehydrator, which offers a capacity of 14 litres.





Clean pad, cheerful pet

Your favourite furball sheds fur daily and can make the home feel uncomfortable. Aside from choosing naturally hair-resistant surfaces, invest in Tefal's TY5516 Air Force 360 Light Handstick Vacuum Cleaner, perfectly suited to pick up animal fur, thanks to its mini turbo brush. At only 1.4kg, you won't tire of cleaning the house for the sake of the furkids. The cordless vacuum cleaner can also be used as a handheld for easy access into crevices.

Soothe their moods

Like their human companions, pets get edgy and moody too. The Sonos One Wireless Speaker is a compact design that sits snugly on shelves and tables, as well as in corners around the house. Create a playlist of soft music or nature sounds to bring relief to anxious pets. You can control it easily with the Sonos app even when you are not at home.



Tefal®



EasyFry | HAVE IT ALL

The first 9in1 healthy fryer combining **air fry, grill, rotisserie & more** by Tefal

99% LESS ADDED FAT*

*Cooking of 700g of fresh fries at 55% weight loss with 8mL of oil vs traditional deep frying with 2L

www.tefal.com.sg [TefalSingapore](#) [TefalSingapore](#)

Pressed to perfection

With its innovative technology and design, the Tefal IXEO+ garment steamer irons, steams and sanitises your clothes and other fabrics effortlessly.

Traditional ironing boards take up a lot of space, and regular irons can burn or scorch your clothes. Tefal's new multi-functional garment steamer not only eliminates these problems, it sanitises your clothes and other fabric items too.

The IXEO+ Garment Steamer QT1510 removes wrinkles and creases using steam. Its Twin Boiler Technology is a double heating system to ensure efficient steam flow and no dripping. It also features Smart Protect Technology, which ensures the right amount of steam and the



perfect soleplate temperature, to prevent ironable fabrics from burns and scorch marks.

Its unique 3-position Smartboard gives you three different ways to press and steam your clothes. Position the board vertically to steam in the usual way, tilt it at a 30° angle for better support when ironing jackets, shirts and tops, or lay the board horizontally for traditional ironing.

The base of the steamer is removable, making it convenient to steam or sanitise fabric curtains, bedlinen and even your fabric-upholstered sofa. The steam kills up to 99.9%



of viruses, bacteria and germs. The steam head is twice as light as a regular iron and ergonomically shaped, plus the appliance stores easily and comes with wheels at the base so it's easy to move around.



Scan here to find out more



Cook with the power of steam

This three-in-one combi steam oven from De Dietrich delivers outstanding results for all kinds of dishes.



Prepare meat and fish that is crisp on the outside and tender and juicy on the inside, and create perfectly cooked pastries, breads, brioches and other baked items, with De Dietrich's new 60cm Epicurean Pyrolytic 100% Combi Steam Oven.

This three-in-one combi steam oven offers more than a hundred predefined recipe programmes, 37 of which are steam-assisted and 25 of which use 100% steam. Steaming cooks your food through completely at a low temperature without drying it out. Plus, it enhances the original flavours of the dish as well as keeps its textures intact while retaining its nutrients.

The oven comes with a 1L built-in water tank to make steaming a cinch. And of course, if you prefer to cook without steam, you can also use the appliance the traditional way.

Cleaning is quick and easy, too, as the oven is equipped with pyrolytic



self-cleaning functions: Classic Pyrolysis and Pyro Express. The Pyro Express function uses the residual heat from the previous cooking cycle to automatically clean the inside the oven in less than an hour. Best of all, this process gives you energy savings of about 50%.



Scan here to find out more

A chef's journey

He has more than three decades of culinary experience under his belt, but Executive Chef Ron Chang still enjoys simple dishes cooked with love.

TEXT Yuki Sun

PHOTOGRAPHY Vernon Wong

Chef Ron and
his team.



Chef Ron Chang's long and varied career – spanning more than three decades – has brought him into the world-class kitchens at Resorts World Sentosa, Peach Garden, Universal Studios Singapore (USS) and WZ Attractions, as well as Nirwana Garden Resort, J&N Cruise, Singapore Recreation Club on the Padang, Furama Hotel and Li Bai Sheraton. His experience transcends the kitchen, as his passion has taken him into menu planning, food research and staff development.

Could you share your most memorable experience from the past 34 years?

Chef Ron: The most memorable experience in my career should be the time when I worked at RWS as part of the pre-opening team in 2009. I got to witness the first IR (Integrated Resort) in Singapore coming together from concrete and mud till the day it opened to the public and served 20,000 guests.

On 1 Jan 2011, I was appointed to lead the entire culinary team at USS and support the pre-opening of WZ Attractions and the Malaysian Food Street. I was responsible for all BOH (Back of the House) activities, including all BOHs, MICE and stewarding departments to ensure that all areas were operating smoothly.

I was also in charge of all menu designs for the restaurants' food promotions, as well as catering for all events held in the park. I led the team in terms of the food research and development on all theming and IP products, while ensuring

“I got to witness the first IR in Singapore coming together from mud and concrete till the day it opened to the public and served 20,000 guests.”

that it aligned with the standards and restaurant concepts at USS. I also got to work with many chefs who came from different parts of the world.

Do you cook for your family? What dish did you miss while working abroad?

Chef Ron: Due to the nature of my work, I have long working hours and irregular off days. I only cook once in a while, mainly simple dishes or hot pot.

While working in Beijing and Russia from January 2009 to February 2020, I missed our local food, such as chicken rice, laksa, kuey chap and so forth.

What are the must-have cooking appliances for any home? Any advice on avoiding common hazards in a kitchen?

Chef Ron: A basic kitchen should have a stove, rice cooker, baking oven, microwave and so forth. Apart from that, it will have to depend on the homeowner's lifestyle. At Gain City, there are huge selections of great appliances: for frying,



stewing, baking, steaming, roasting and braising.

As for kitchen safety, I would suggest for one to purchase an electric induction cooker that comes with a timer, which is available at Gain City. It is a much safer option when you live with the elderly or need to cook something that takes more than an hour.



Tasty, easy to cook tofu recipe

68

We asked Chef Ron for a recipe for a nutritious and healthy dish that anyone can cook for their family. Here is his braised homemade tofu with assorted mushrooms in fragrant garlic sauce (蒜子什菌扒豆腐). You may substitute with egg tofu, an ingredient that's readily available at supermarkets.



INGREDIENTS

- 1 packet of egg tofu, cut into smaller portions
- 1 clove garlic, sliced
- 1 piece ginger, sliced
- 2 shiitake mushrooms, washed and chopped
- ¼ cup chopped carrot
- 2 stalks of bak choy
- 1 tablespoon oyster sauce
- 1 tablespoon soya sauce
- 1 ¾ cups water
- 1 pinch white pepper
- cornstarch slurry

METHOD

- 1** Place tofu circles in a heated non-stick pan. Pan-fry the tofu without oil to seal the outer layer. Once you see a thin crust form, add a drizzle of oil and continue to cook until golden brown on both sides.
- 2** Remove the tofu from the pan and set it aside.
- 3** Blanch the bak choy and carrots in hot water with a little salt and oil. Remove the bak choy after 1 minute, rinse them with cold water and set aside.
- 4** Sauté garlic and a piece of ginger in a wok until fragrant.
- 5** Add in the mushrooms and vegetables, and continue to cook until the mushrooms are fragrant. Drizzle in the soya sauce and water. Add cornstarch slurry to thicken. Finally, season with oyster sauce and white pepper.



Build it your way

The new Samsung BESPOKE refrigerator lets you configure it the way you like, so you're free to express your unique aesthetic.

Homeowners today dream of personalised kitchens, and Samsung's BESPOKE refrigerator line-up is here to make it a reality. With colour customisation, you no longer have to be limited to a silver or black fridge. Choose from five classic and vibrant hues: Glam White, Glam Pink, Glam Navy, Satin Sky Blue and Satin Gray, available in two finishes – silky-matte Satin Glass and glossy Glam Glass. Colour panels are changeable¹, so if you fancy a kitchen revamp later, simply switch to a new set of colour panels for a brand new look.

The flat-panel design features recessed handles for a seamless, clutter-free look aligned with your kitchen cabinets with minimal installation gaps. Fridge drawers are ergonomically designed such

that they can be fully pulled out to conveniently access items without having to open the door wider than 90 degrees. No worries then about bumping into adjacent cabinets or walls!

More than that, the BESPOKE line-up allows you to configure your refrigerator. Choose from 4-Door Flex, 2-Door Bottom Mount Freezer and 1-Door Flex combinations to meet your storage needs and home space. Along the way, add more modules for a customised BESPOKE fridge for your stage in life.

The BESPOKE refrigerators are also packed with innovative features² that help to keep food fresh and optimise storage space. The 4-door Flex features the Triple Cooling System, which ensures freshness



and prevents odours from mixing, as well as Samsung's signature FlexZone™ compartment, with pre-set temperature modes for you to convert your fridge into a freezer when you require extra storage space. The BESPOKE refrigerators also come with Digital Inverter Technology that delivers optimal performance with less energy and a Metal Cooling Plate to maintain consistent temperature for ultimate freshness.

¹ Additional colour panels can be purchased separately and installed by a qualified technician. Additional charges may apply for re-installation of colour panels.

² Features stated are applicable to selected BESPOKE Refrigerator models. Images are for illustrative purposes only.



Scan here to find out more

PHILIPS

Airfryer XXL

Premium

Fry, roast, bake, & grill as you like
100% Taste, 90% less fat*

*Compared to fresh fries prepared in a conventional Philips fryer.

Meet your new private chef

Whipping up delicious and wholesome homemade meals just became easier for the busiest urbanite.

Who says homecooked food has to be boring and bland? With minimal prep, your meals can be as delicious as your favourite dine-in guilty pleasures, minus the artery clogging grease.

Whether you have a soft spot for crispy fried chicken or fries, the new Philips Airfryer XXL will prep it with up to 90 per cent less fat. This oil-free indulgence is not only healthier, but also tastier. Thanks to the Philips air flow and starfish design, food is cooked uniformly from all sides. It's also 1.5 times faster than an oven.

Expand your menu with minimal



effort. With baking, grilling, roasting and reheating functions, this super multi-tasker also makes perfect muffins, stews, gratins and succulent meats. Simply choose the food type and press the cook button. The Smart Sensor will automatically adjust the time and temperature for perfect results every

time. It's like having your very own private chef.

With hundreds of mouthwatering and nutritional recipes on the NutriU app, your homemade meals will be a hit among everyone from young to old. So it's a major plus that this airfryer is able to effortlessly whip up large family-size meals.



Scan here to find out more



Game on

Whether you're gaming or watching a movie, enhance the experience with Philips' new 4K UHD OLED Android TV, the OLED806.

The OLED806 from Philips is a versatile all-rounder. With its P5 Picture Engine with AI, Dolby Atmos sound, Dolby Vision and Philips' exclusive **4-sided Ambilight**, it gives a thrillingly realistic picture for a truly cinematic experience.

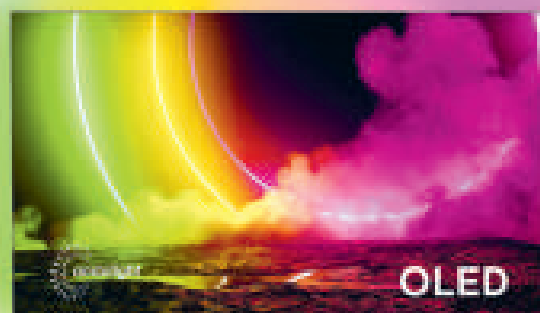
If you're a gamer, you'll appreciate its range of special features, including the NVIDIA G-SYNC and AMD FreeSync dual-certified large format displays. Meanwhile, VRR and ALLM provide ultra-low latency and the smoothest and best gaming experience.

This Android TV looks stunning even when you're not watching it. It's no surprise that it was a 2021 Red Dot Award winner and a 2021 iF Design Award winner. Premium design elements include the ultra-thin metal bezel, the soft, textured, leather-backed remote control with backlit keys, and the reversible, two-tone metal feet that fit to the TV either way around.

GO BEYOND...

Watch whatever you want, anytime. The clear, intuitive interface and voice control always finds the content you love, whether it's on Amazon, YouTube, Netflix or Disney+. You can even go beyond traditional TV programming with Google Play Store for content and apps.

The TV works with Alexa and Google Assistant, so you can change the channel, watch Netflix, find apps in the Google Play store



and more by just using your voice..

In addition, the OLED806 boasts **Eye Comfort**. Low blue light, flicker-free and with no discomfort glare, this feature means you can stream, game and binge-watch for hours while staying fresh-eyed. Other impressive features include **Mimi Sound's** personalised health volume function, 4GB of storage space, and 32GB storage space for applications, files and software.

Choose between 55" and 65" screen sizes.

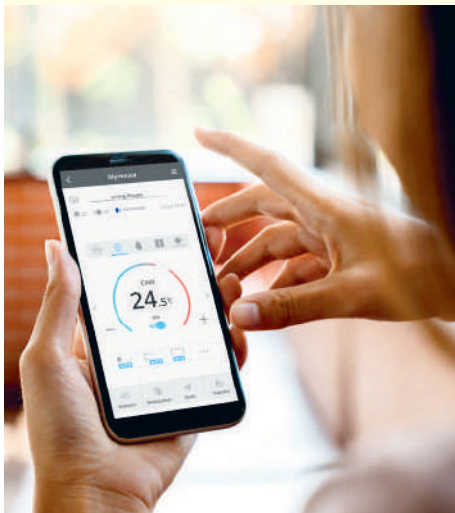


Scan here to find out more



Smart and cool

Control the air quality and temperature in your home with this Panasonic air-conditioner with built-in Wi-Fi.



Improve the air quality in your home with the Panasonic Wall-mounted X-Premium Inverter. Featuring 24-hour nanoe™ X protection, this innovative appliance can inhibit up to 99.7% of novel coronaviruses and pollutants, according to research, as well as reduce odours – round the clock. The technology even helps moisturise your skin and hair. Turn on nanoe™ X using the Panasonic Comfort Cloud app; it functions in both cooling and fan modes and is maintenance-free to keep costs down.

You don't have to wait for ages to feel that the appliance is working,

because the iAutoX technology ensures that the room cools down quickly and delivers a comfortable, steady temperature for as long as it's running. From the moment you switch on your air-conditioner, twin blades work together to direct airflow down, providing cool, concentrated air where you need it most. Panasonic's iAutoX technology will detect the temperature difference between the room and the desired temperature, and automatically adjust the fan speed from very high to low, depending on your needs.

Keeping your home cool is easier than ever, too. Thanks to the built-in Wi-Fi and Panasonic Comfort Cloud app, you can monitor or control single or multiple air-conditioning units, anytime and from anywhere, using just one mobile device. You can even assign additional users so that each family member can control the selected air-conditioners remotely.

*Research by Texcell SA (France) in January 2021. Test conditions apply.



Scan here to find out more

BTO basics

Turning your
new house into
a real home.

HOME INSIDER

73

3 inspiring K-POP celebrity homes

Take a leaf from the homes of these Korean pop superstars the next time you're redecorating.

TEXT Rachel Goh

Looking for inspiration to tackle the challenge of decorating your home? Look no further than these K-pop celebrity homes. Their stunning cribs are not only functional, they also reflect each celeb's individualism and creativity.

Photo: G-Dragon's Instagram



Photo: G-Dragon's Instagram



BigBang's G-Dragon

Much like his personality, G-Dragon's penthouse is flamboyantly colourful from head to toe. Unique art pieces give the penthouse its lively character and can be found in every corner. Even its curtains are emblazoned with minimalistic line art.

We love his innovative design aesthetic: Cue the lighted mirror in his bedroom, or the hanging plants shading his dining room from unnecessary sunlight.

Pet owners can also take some tips from G-Dragon's home: In a nice, shady spot of his penthouse lies his cat's bed, where his cat is free to do anything it pleases, as long as it does not dirty the floor. Overall, his home is an eccentric mix of fashion and style, and while it may not be for everybody, it's a timely reminder that we should be comfortable with ourselves and choose an interior design that suits our personality.

Mamamoo's Hwasa

Hwasa's abode gives her an incredible view of the busy Korean streets as she enjoys a cup of coffee on her balcony.

Hers is a chic and cosy home, with a modern interior that is set off by the fluffy comforters found all over her house, from her thick bed to comfy sofa and cushions.

Her modern kitchen features a dark granite counter top that transitions into a table, a suitable match for those who prioritise both functionality and aesthetics when it comes to interior design.

A fun, finishing touch to her apartment's look is the white arcade machine that resides in the kitchen. While not everybody's cup of tea, Hwasa's apartment does give us insight into how you can incorporate creativity into real life.



Photo: MBCentertainment YouTube Channel



Photo: Screenshot from KOCOWA "Home Alone" YouTube Channel



Photo: Hwasa's Instagram



Photo: Jennie's Instagram



Photo: Screenshot from Jennie's YouTube channel

Blackpink's Jennie

Though well-known for being fiercely private about her personal life, Blackpink's Jennie has posted photos on Instagram that show us her swanky crib. In fact, her cover of *When Will My Life Begin* on her YouTube channel gave us glimpses into what her house looks like.

Jennie's minimalistic home is a reminder that in spite of her stardom, she lives life like us. From her YouTube video, her comfortable bed can be seen, fluffy white sheets covering the bed frame – her bedroom free of clutter.

Pastel and plain colours appear to be the common theme running throughout her home.

Jennie seems to be a fan of keeping fit, creating her own mini exercise corner. Green plants add a finishing touch to the porcelain white walls, giving her home a light and airy feel.

CUCKOO

BEYOND STANDARDS



CUCKOO INTERNATIONAL (S) PTE. LTD. 50 MacPherson Rd, #04-01, S348471

CUCKOO | CUCKOO Singapore cuckoosgofficial info@cuckoosg.com www.cuckoosg.com 6248 0888

Pure and clean

Experience CUCKOO's top-selling water purifier.

CUCKOO's best-selling water purifier, Prince Top, is equipped with the world's first In & Out Electrolytic Sterilisation System. This innovation from the South Korean appliance brand prevents common kitchen bacteria from contaminating the water purifier – the product's inner tubing disinfects the pipes that have regular contact with the water supply, while the faucet sterilises and eradicates house dust and micro-particles.

Additionally, the Prince Top offers two patented and certified technologies. The Natural Filter removes impurities like mould spores and sand; uses activated charcoal for an antibacterial effect;

provides minerals from hardwood charcoal and ceramic pellets; eliminates harmful substances; and maintains the water's alkalinity. The Nano Positive Filter removes traces of heavy metals and 99.99% of pathogens and bacteria, as well as insoluble organic matter, residual chlorine and other impurities.

The light and compact Prince Top is suitable for even small kitchens and is finished in stylish rose gold. It also has water temperature settings and a tankless interior, designed to lower energy consumption.



Scan here to find out more

CUCKOO is available at level 2, Gain City Megastore @ Sungei Kadut.

FORREST
GEMS AMETHYST

The Sleep Miracle From Nature

The MaxCoil FORREST™ Amethyst collection features miraculous properties of the power gem to improve quality of life by maximising sleep quality. Replenish your lost energy, feel more uplifted, promote self-assurance and confidence with the powerful qualities of Amethyst.

- Perfect balance of support and amazing comfort
- Excellent relief for pressure points
- Motion absorption for undisturbed sleep
- Swiss Sanitized® Actifresh technology



Wake up feeling rejuvenated

Rest easy with MaxCoil's **FORREST™ Gems Amethyst mattress collection.**



Amethyst I



Amethyst II

Body aches and constant fatigue are common experiences among working adults. If this is you, the MaxCoil FORREST™ Gems Amethyst mattress might just be the solution to boost wellness.

Its Amethyst fabric harnesses the power of amethyst gems, bringing the restorative properties of far infrared radiation and negative ion emission to eliminate negative energy and relieve fatigue. Choose from three mattresses of different comfort feel and firmness to suit your needs.

The medium firm 11" Amethyst I features a plush top with memory foam and high-density foam. Its Nested Encapsulated Coil system provides all-over even support to relieve pressure points.

For a snug feel, the soft 13.5" Amethyst II consists of a pillow top with Belgium natural latex and Fusion Flow Foam for extra cushioning comfort. Its Enhanced



Amethyst III

Edge Support system also minimises motion transfer.

Lastly, with its push-back hug and contour support, the medium soft 15" Amethyst III is suitable for both light and heavy sleepers. It boasts a double pillow top with Belgium natural latex, Fusion Flow Foam and memory foam for the ultimate sleep experience.

All MaxCoil mattresses come with Swiss Sanitized® antimicrobial protection for enhanced peace of mind and well-being.



Scan here to find out more

Make your BTO move-in ready

So you've just collected your keys to your new Build-To-Order flat. Follow our step-by-step guide to making your new house a home you can call your own.

TEXT Sasha Gonzalez
ILLUSTRATIONS Brian Chia



1 Plan a look that suits your lifestyle

Browse through magazines and search online for inspiration. Prepare a list of what you like, for example, dark wood floors, Scandinavian elements, industrial accents, bright colours and so on, and look for images that illustrate your ideas and vision.

Consider what might affect your design vision. For instance: If you have children or pets, an all-white Scandinavian style may not be practical. If you need a customised workspace, you may want to design it so that it complements the rest of the home. If you plan to have children while still living in your flat, you probably wouldn't want to break down walls or combine rooms.



3 Decide on the flooring early

Like all BTO flats, you should expect your new home to come with the standard HDB tiled flooring. However, you can opt out if you want a different flooring finish, such as vinyl, laminate or cement, for example, or if you're undecided about the type of flooring you want at this early stage. Opting out first will save you from having to hack the tiles and redo the flooring later – a troublesome, time-consuming and costly job.

2 Scout around for an interior designer

If you have the budget, you may consider engaging an interior designer to help bring your ideas to life. Get recommendations online or from people you know. Check that they're reputable (read their reviews) and get quotes. He or she should give you design advice and help you plan a budget – or work around yours – and timeline. They can also help you select colours, fabrics, paints and design materials.





6 Add the finishing touches

If custom-made furniture and built-in appliances are part of your design, they'll likely be installed at the final stage. These are a great way to personalise your flat and help it stand out.

4 Hire a renovation contractor

Do your research. You want someone who's professional, knowledgeable and trustworthy, and will deliver the results you want at a price you can afford (budget an extra 10 to 20 per cent, in case more work or materials are needed along the way). If your project involves a specialised task, say, installing prefabricated countertops, it would help if the contractor has experience with it.

The contractor should work closely with you and the designer when it comes to the placement of power outlets and appliances. Remember that most appliances, like water heaters and air-con units, have to be installed by certified professionals.

7 Do a thorough inspection before moving in

After the renovation is over and the flat has been cleaned, conduct a walk-through inspection. If anything looks out of place or small touch-ups are required, try to resolve them with the contractor.

5 Get approval from HDB

Read HDB's guidelines for building works, window works, electrical works, water and sanitary plumbing works, and gas works. Demolishing a wall, for instance, may not be allowed as it could compromise the structural integrity of the flat, and some gas works aren't permitted as they may cause gas leaks.





comfortable beds loved
around the world



North
America



South
America



Europe



Asia



Africa



Australia

Get the best rest

**King Koil mattresses
promise a comfortable
and relaxing slumber,
night after night.**

We spend about one-third of our lives sleeping, so it makes sense that our mattress should deliver unparalleled comfort and support.

King Koil is the only mattress brand endorsed by the International Chiropractors Association. Each mattress features the signature 5-zone, individual pocketed barrel

spring, which offers optimal lumbar support and ensures you get quality, undisturbed sleep every night. The Excellent Edge™ Foam Encasement provides a firm seating edge and helps you maximise the sleeping surface.

All King Koil mattresses are crafted from layers of Made in Korea Micro-Gel™, 100% Natural Latex and Deep Visco Memory Foam, giving them a luxurious feel so that you wake up refreshed and relaxed. They are also upholstered using the finest European designed mattress covers, which are treated with Ultrafresh to inhibit the growth of bacteria, mildew, mould and dust mites. This ensures that the mattress covers remain hygienic for the entire lifespan of the mattress. It's no surprise that King Koil is the preferred brand of global hoteliers, serviced residences and educational institutions.

King Koil mattresses are made to order in Singapore just before delivery.



Scan here to find
out more

Tips for choosing the perfect appliance



① Fan

Standing fans are great for cooling rooms and small spaces, while ceiling fans ventilate a bigger area. When buying a ceiling fan, first check that it has a Safety Mark. Also check that it's energy efficient, that it's quiet (if this is an important consideration), and that its blades are long and wide enough to cool the space it's in.

Follow the HDB guidelines for ceiling fans: For instance, the fan must be at least 2.4m from the floor and weigh no more than 35kg.

② Air-conditioner

Decide which rooms need cooling and check how many BTUs (British Thermal Unit) are needed to cool those spaces. The BTU tells you how powerful the air-con unit is. The bigger the room, the more powerful the unit should be. A 100-150 sq ft room would require a unit with a 5000 BTU capacity, while a 350-400 sq ft room would require a 9000-BTU unit.

Check its energy efficiency rating. A four-tick air-con unit saves you some \$450 in electricity bills a year compared to a one-tick model.

③ TV

To determine how big your TV should be, and for the best "immersive cinematic experience", follow this tip from the audio and visual standard certifier THX: Measure the length (in inches) between your couch and the TV and multiply it by 0.84. So, if you have 1.5m (60 inches) between your couch and the TV, the optimal TV size would be 50 inches. Check that the back and/or sides of the TV have all the ports you need for your devices, like your camera, gaming console, and so on.

④ Home audio system

The general rule when purchasing speakers is, large speakers work best in large spaces, small speakers in small spaces. There are many different types of speakers available, too, from a slim soundbar and bookshelf speakers to floor-standing speakers and in-ceiling ones. What you choose also depends on your family's audio needs and preferences, and whether you want the speakers to be part of the décor.

Photos: iStock



⑤ Washing machine

Decide if you prefer a top- or front-loader and what capacity suits your household – the bigger the drum, the higher the capacity, which means that you can wash more clothes in one cycle. Bear in mind that high-capacity machines use more energy and water.

Most machines also offer a range of features, such as low noise, high speed, multiple wash settings, delicate cycles, and dry cleaning.

Finally, the appliance should be water efficient – the water label should have two or three ticks.

⑥ Oven

There's a lot to consider when buying an oven: Electric or gas? Freestanding or built-in? Do you need a fan-forced oven, which distributes heat evenly and cooks food faster (and is also more useful in gas ovens, since the heat tends to concentrate at the top)? Should you get a steam oven, which reduces cooking time and preserves the nutrients in the food?

And then there are self-cleaning ovens, designed to save on clean-up time, and double ovens, for bigger households or people who cook a lot.

⑦ Stove

There are benefits to both gas and electric stoves. What you end up buying would depend on your budget, your family's needs, how you intend to cook on it, and the type of cookware you have.

For example, an electric stove takes longer to heat up so it may not suit someone who's always in a rush. It's also harder to control the heat on an electric stove. On the plus side, however, an electric stove is more aesthetically pleasing and easier to clean. Cost-wise, gas stoves are more economical than electric stoves.

⑧ Water heater

Instant water heaters heat the water as soon as you turn on your shower and are ideal for just one shower point. A storage water heater, on the other hand, holds heated water and can be shared between a few bathrooms (it's also perfect if you have a rain-shower).

A large storage water heater is recommended if everyone in your household tends to shower at the same time or one after another. If everyone showers at different times, choose a smaller one.



Complete Hygiene for Everyday Living

Whirlpool's SaniCare Washers and all-in-one Washer-dryers deliver complete hygiene protection for you and your family.



**SANITIZE
WASH**



**ALLERGY
CARE**
* Washer Only



**HOT AIR
REFRESH**
* Washer Dryer Only



**DRUM STERILIZATION
ANTIMICROBIAL DRAWER
& BELLOW**



WASHER

FWEB8002GW / FWEB9002GW / FWEB10502GW

WASHER DRYER

WWEB8502GW (White) / WWEB11702GG (Gray)

Whirlpool

Fresh & clean with Whirlpool

Make washing a whirl of a time with Whirlpool's new SaniCare Washers and all-in-one Washer-dryers.

When faced with mountains of laundry, finding the right companion to aid you can be a daunting task. Whirlpool's SaniCare Washers and all-in-one Washer-dryers are the friends who do it all, making washing a pleasant experience and ensuring that your clothes are squeaky clean.

Certified by reputable inspection and certification body, SGS, all SaniCare models come equipped with the Sanitize Wash program. Coupled with laundry sanitisers, Sanitize Wash program eliminates up to 99.9% of bacteria at a low temperature wash of 40°C. Unlike the conventional method of cleaning at high

temperatures, you can now give your clothes the protection they deserve without damaging them. Their Drum Sterilisation feature kills dirt and bacteria at 90°C, leaving the most hygienic environment for your laundry.

Thanks to the Antimicrobial Drawer and Bellow in which an anti-bacterial agent is injected during production, the SaniCare Washer and the all-in-one Washer-dryer work to prevent pesky bacteria and mould from making your laundry their home, even after long-term use. For family members with allergies, the SaniCare



SaniCare
Front Load Washer



SaniCare Front
Load Washer Dryer

Washer's Allergy Care program – heated up to 90°C – is designed to eliminate 99.9% of pollen and dust mites. Say goodbye to uncomfortable bouts of allergies!

SaniCare's all-in-one Washer-dryers have it all, including its unique Hot Air Refresh feature, using heated air to remove unpleasant odours and bacteria, even without washing.



Scan here to find
out more



Well rested

Wake up refreshed with this bamboo fabric-covered mattress from Princebed.

The Florence mattress from Princebed gives you a comfortable night's rest, thanks to a host of impressive features.

Within the mattress is an Exclusive Coil Stabilizer, which delivers vertical stability and prevents coil separation. The Independent Barrel Pocketed Coil ensures silent and undisturbed sleep, and is hermetically sealed to prevent rust and maintain hygiene inside the mattress. Its Pre-Compression feature provides resilience and durability.

The non-flip mattress is also highly supportive. Its three-inch-thick, Grade 1 SPF Latex padding keeps your spine supported and reduces back soreness. In addition, the mattress is made from non-allergenic materials so it does not have residual



odour, and is ozone-friendly as no chlorofluorocarbons were produced during the manufacturing process. The Strutus Quilt Filling offers extra resilience, comfort and support and has a unique wavy design for better ventilation.

The fabric is made from bamboo pulp fibre, which, apart from being biodegradable, renewable and natural, has a better moisture

absorption rate than cotton (32% vs. 8%), to keep you cool on warm nights and cosy when it's cold. The fabric also has a Stress Relief feature to balance your body's ion levels. The HealthGuard Sanitized Treatment feature keeps the mattress free from dust mites, mould, bacteria, yeasts and algae.

The mattress comes with a 15-year warranty.



Scan here to find out more



Living with fengshui

Geomancy Grand Master Tan Khoon Yong practises what he preaches, as evidenced in his new home.

TEXT Hong Weixi

PHOTOGRAPHY Yoong Choon Hwa

Those looking to buy a new house or renovate their current abode may want to consider cultivating some good fengshui. Understanding how to apply the principles can be a daunting task for first-timers though, so we speak to Singapore's very own fengshui Grand Master Tan Khoon Yong, Chief Geomancer of Way Fengshui Group, who recently moved into his new home, to get some advice.



What is the design concept for your new house?

Tan: My wife wanted this house to be where we spend our old age, so our main concern was the ease of convenience for our living. Naturally, my wife's needs take precedence over everything else, so she has the first say in the design. My needs come in second and finally, our daily needs.

Please introduce the layout of the house.

Tan: Art plays a very important part in my life, so I created an art gallery for my paintings on the first floor, right by the entrance of the house. We set up a mini cafe by the entryway, where my family and friends can hang out. Our office space, split into his and her sides, sits just past the entrance. Beyond that, you will find the living room, the kitchen, the dining area and a guest room. Our sleeping quarters are on the second floor. The top floor contains a couple of guest rooms and is mostly unused except for when our children and grandchildren or other guests visit.

Any fengshui elements in the new house?

Tan: Every year, the Flying Stars and Influential Stars will rotate and determine the luck cycles of different households. A visiting star would dominate over others. The inherent traits of this particular star epitomise events and happenings for the year, which will, in turn, affect our home and household members in areas such as health, wealth, relationships, career, academics, happiness and so forth.

“ Our living room is usually where the main energy of our home circulates and plays an important role in the harmony and wealth of our household. ”

This year, homes facing east and west have the best luck and can expect excellent fortune and fame with the gathering of lucky stars. On the other hand, those facing south and north will be down on their luck, and big-scaled events and renovations should be avoided.

Originally, the main door of the house was facing north/south. Hence, the first thing I did was to build an extension to house my art works, and at the same time, change the direction of the main door to east/west facing.

I placed an elephant sculpture at the entrance because the elephant symbolises harmony. And as the neighbouring house is quite close to us, the shiny sculpture can also help to deflect negative energies.

I also specially did a new painting, which depicts a lion playing by a waterfall, to adhere to the fengshui of the house.

Any fengshui strategies for those looking to get a new home?

Tan: It is best to get a professional fengshui master to advise you before purchasing a new house as they will be able to recommend a suitable house to buy, based on the yearly luck cycle of household members, the house's orientation and layout. The three key positions to look out for are the positioning of the main door, kitchen

and master bedroom. A fengshui master will be able to identify conflicting negative energies such as sharp objects or incoming traffic that leads straight to your main entrance and advise remedies to improve the situation. He can also provide strategies to attract and garner more positive “qi”.

What about those who already own a house?

Tan: If you want to achieve optimal balance based on the current house, you can make adjustments accordingly. For example, if you cannot change the direction of the main door, you can change the position of the windows instead. If both the entrance and windows cannot be changed, then we can make adjustments to the foyer by adding a folding screen or ornaments.

Placement of items in the wrong sector can upset the harmony of the family. The presence of electrical appliances like TV, Wi-Fi router and air-conditioner affects the magnetic energy fields of the surroundings. The TV should be placed in auspicious areas as the last thing you want to do is to amplify your bad luck. Many people like to place the Wi-Fi router in the centre of the house to ensure even coverage of the Wi-Fi signal, but the best position is actually in a corner.

Any other advice?

Tan: Fengshui is about common sense and logic. If you feel that something is inconvenient or defies logic, then it is probably not right. After all, living needs should be our first consideration.



2022 fengshui tips for homeowners

Those looking to scale up their business, get promoted or change jobs should pay extra attention to their main door and study. If your main door or study lies in the southeast or east sector, benefactor stars could give your business and career an extra boost, especially if you are born in the year of the Snake or Rabbit. Your main door and study should be kept bright and airy so as to ensure opportunities can reach you unhindered.



Our living room is usually where the main energy of our home circulates and plays an important role in the harmony and wealth of our household. If your living room lies in the south or the northwest of your home, then your wealth index is strong in the year 2022, especially for those under the Rooster, Pig or Horse zodiac year. Keep your living room tidy and welcoming. If you feel restless and agitated, check the sector your living room sits in.



Health and good relationships should be the number one priority in every household. The rooms that govern these aspects are the bedroom and kitchen. If your bedroom or kitchen sits in the southwest, watch out for illnesses or injuries this year, especially if you are born in the year of the Ox or Goat. If your bedroom or living room is in the east or west, your relationship luck bodes well and you will be able to build strong relationships and strengthen existing ones too.



Commonsense fengshui

1 Avoid having the stove and the refrigerator in direct line of sight when opening the main door. Otherwise, it might lead to an erosion of wealth or difficulty in accumulating wealth as outsiders 'steal' your bounty. If the fridge ends up facing the stove due to space constraints or other reasons, you can resolve it by placing auspicious ornaments like fossil wood or coloured glaze on top of the fridge.

2 Position the headboard of your bed against a solid wall. This will allow you to have a good night's sleep.



3 No mirrors should face the bed as it can diminish your "qi" while you sleep.

4 Clocks should not be placed over door frames or on the outside.

5 Plants, flowers, paintings, photos and electrical appliances should not be placed around the wealth corner.

6 Avoid having paintings of ferocious animals such as tigers and lions around the house.

Island fixture

EF's Island Hood has a streamlined design and multiple features.

CK Luna IS is the latest 90cm Island Hood from EF featuring novel Gesture Control, ergonomic Sensor Touch Control and an LED panel. Attractively designed for any modern kitchen, the hood features powerful suction of 1200m³/hr and Air Ioniser to sanitise the air, leaving clean air all round. Home cooks love it as it effectively eliminates grease and odours with its grease filters plus 2-in-1 carbon filter.



Scan here to find out more



All-in-one water dispenser

Enjoy pure tasting water, hot or cold, anytime you like.

High performance meets ultra-convenience in the Philips All-in-One Water Dispenser (ADD5980M/90). Enjoy pure-tasting water that's refreshingly chilled or piping hot whenever, wherever. You can also set multiple volume and temperature settings at the touch of a button. Say goodbye to re-boiling or keeping warm and hello to less energy consumption. The dispenser is BPA free and requires no installation.



Scan here to find out more



Air dry

The new Sharp Plasmacluster Dehumidifier eliminates airborne bacteria and removes mildew-causing dampness in your home.

Excess humidity can promote the growth of mould and mildew in your home. This can make your home smell bad and damage valuable items like leather bags, electronics, cameras and paintings.

The Plasmacluster Dehumidifier DW-D12A removes up to 12 litres of moisture from the air, thereby helping to remove odours and suppress mould growth, even

if the spores have already taken hold.

Plus, Sharp Plasmacluster eliminates up to 99% airborne bacteria*, 91% airborne virus* and reduces Airborne (SARS-CoV-2) by 99.7%**.

In Laundry mode, the dehumidifier dries indoor laundry fast, thanks to the flexible louver. And compared to a dryer, it uses less energy.



Scan here to find out more

* <https://global.sharp/pci/en/certified/> ** <http://global.sharp/corporate/news/210715-a.html>

JUST FOR YOU

We're
celebrating!

Events, promos
and prizes
galore await!

91

JUST FOR
YOU

Celebrate 41 years with us!



92

Gain City turns 41 this year, and we're thrilled to be celebrating it with plenty of gifts and deals for all our customers. From fantastic in-store deals to amazing events with prizes to be won, and the ultimate giveaway – a brand-new electric car, Gain City is the place to be.

A journey that started in 1981...

From a single humble kampung store in 1981, Gain City is today the largest air-conditioner retailer in Singapore

with over 13 showrooms islandwide. Through hard work and the belief that the customer always comes first, the company has expanded into a wide range of retail products. At the same time, it continues to reinforce its position as a specialist in retail and air-conditioning services, and is heavily involved in multiple air-conditioning and mechanical ventilation projects in the residential, commercial and industrial sectors, as well as trade shows and mega-events.

Receive a set of
WMF cookware
worth \$259
with a minimum
spend of \$1,341



Terms & conditions apply

WIN the BYD e6!

Stand a chance to win the all-new BYD e6 electric car when you shop at Gain City! With every \$100 spent, customers are entitled to 1 lucky draw chance to win themselves the new, improved passenger car.

With its breakthrough Blade Battery technology, the BYD e6 promises higher safety levels and improved energy efficiency, while offering drivers 522km of range on a single charge. The e6 also offers fast charging capabilities and 580 litres of trunk space for the convenience of drivers.

Qualifying period
for lucky draw:
21 March – 29 May 2022

Terms & conditions apply. COE excluded.
Car image for illustration purposes only.
Specifications may vary.

Official Car Sponsor:



Relish the best shopping privileges!

Flash your Gain City family card or app at participating stores to enjoy sweet discounts.



SHOP

Get the most bang for your buck with shopping discounts from **Bata**, **City Chain**, **Goldwood** and **L'zzie**!

DINE

Go on, treat yourself to local cuisine from **Old School Delights** and tapas from **The Winery**, or indulge in Japanese fare from **Hinode Izakaya Bar**. Don't say we bo jio!



PLAY

Hone your singing chops at **Music Story**, or pick up a good read from **Times Bookstores**, and enjoy cool discounts while at it!



RELAX

Spoil yourself silly with these wellness deals from **Nailz Gallery**, **Q&M Dental Group**, and **Kinohimitsu**



Don't miss these...

BATA Get 10% off with a minimum spend of \$40 on regular priced items. Use the promo code 'GCB10' on bata.com.sg to be entitled to the discount.

CITY CHAIN Get \$5 off your online purchase with the promo code 'GAINCITY5'. No minimum spending required.

GOLDWOOD Get 10% off regular-priced items online. Visit www.goldwood.sg and apply the discount code 'GAINCITYXGW'.

HINODE IZAKAYA & BAR Spend \$100 to enjoy a 10% discount off your total bill.

KINOHIMITSU Get 25% off regular priced items with a minimum purchase of \$50.

L'ZZIE Get 10% off regular priced items online. Visit www.lzzie.com and apply the discount code 'GAINCITYXLZZIE'.

MUSIC STORY Enjoy 25% off singing lessons: \$1,800 for 16 individual sessions or \$388 for 8 group classes.

NAILZ GALLERY Get 6 classic manicure sessions at \$132 (U.P. \$168) or 6 classic pedicure sessions at \$198 (U.P. \$228).

OLD SCHOOL DELIGHTS Enjoy 10% off your total bill.

Q&M DENTAL GROUP Enjoy corporate fixed rates for over 20 dental treatments. More info at lead.me/CorpRate.

TIMES BOOKSTORES Get 8% off regular priced items with no minimum purchase required.

THE WINERY Get 1 free glass of beer or wine (worth \$12) and a free soft drink for kids below 12 years of age.

Terms and conditions apply



Sign up for a free Gain City Family Card membership to enjoy shopping, dining and lifestyle privileges! Visit gaincity.com



Scan the QR code to view the terms & conditions.

JUST FOR
YOU

Recycle your air-con for cash



Call us at **6583-1212** to pick up your used air-conditioners, or deposit them at the following collection centres:

Gain City Singapore @ Sungei Kadut

71 Sungei Kadut Drive,
Level 10
Singapore 729577
Operating hours:
8.30am to 5.30pm

Gain City Ang Mo Kio

8 Ang Mo Kio Industrial
Park 2, Level 1
Singapore 569500
Operating hours:
8.30am to 5.30pm

Scan here to find out more:



Photos: iStock

Who knew doing your part for the environment could be kind on your wallet too? With Gain City's e-waste management programme, you can get the **best price** for your used air-conditioners.

As one of only three authorised e-waste recyclers regulated by

the NEA, Gain City will recycle used fan coil units, condensing units, window units or copper pipes under Singapore's Extended Producer Responsibility (EPR) scheme for e-waste management.

Dispose your used air-conditioners responsibly, and together, we can build a greener and more sustainable Singapore.





Read City Living 24/7 online!

Get access to the latest in home appliances and decor tips with your digital copy. See something you like? Just click and check out! It's that easy.



**Tips &
hacks**



**Ideas
you'll love**



**Click &
shop**



Scan the QR code
to read or share
past issues from
2019 to 2022!

cityliving.com.sg

JUST FOR
YOU

JBL Wave
200TWS
Purple

PANTONE
17-3938
Very Peri

Editor's choice

Very Peri, 2022's cool
new colour may be
understated but is
undeniably gorgeous
when applied to
everyday appliances
and devices.

Samsung
Smartphone
A32 6.5"
SM-A326BLVH-
5G-8+128-
VIOLET

Logitech Pop
Mouse Emo W/L
MT 910-006515

Dyson DSlime
Cordless
Vacuum
Dslime-Fluffy-
Extra (SV18)

WORLD OF NAZARIO


A new standard in luxurious,
comfort living with superior sofas



PRODUCTS, PASSION & QUALITY

Our design and production team works passionately hand-in-hand to create different leather sofa collections to fulfil the varied needs and requirements of our customers. Comfort and ergonomics are our top priorities. One of the reasons for our customer loyalty is our consistent quality. Every sofa interior and exterior is crafted with the finest finishing. There is meticulous attention to detail given at every stage of production. Only premium quality materials are used with the latest technologies and skill to produce sofas of uncompromising quality.

GAIN CITY MEGASTORE @ SUNGEI KADUT
71 Sungei Kadut Drive, Singapore 729577



MITSUBISHI ELECTRIC

Changes for the Better



EXCELLENT
Energy
Savings

QUIETEST
19dB

EASY
To Clean!
Easily accessible
Inner vent

Mitsubishi Electric
starMEX
Air-Conditioner



MUY-GN10VA



MXY-2G20VA2



MXY-3G28VA2



MXY-4G33VA2



MXY-4G38VA2



MXY-5G48VA2



MXY-4C100VA



MXY-5C125VA



MXY-6C140VA

**WIDE RANGE OF EXCELLENT ENERGY SAVINGS
5-GREEN TICKS AIR-CONDITIONERS IN SINGAPORE**



MITSUBISHI ELECTRIC ASIA PTE LTD Mitsubishi Electric Building, 307 Alexandra Road, Singapore 159943. Tel: 6473 2308 Showroom: 6470 2600.
Open Hours: Monday - Friday (8.30am - 5.30pm), Closed on Weekends, Public Holidays and Company Designated Holidays www.MitsubishiElectric.com.sg